



Up To
5,294 SF

OFFICE SPACE AVAILABLE FOR LEASE

63 KERCHEVAL AVENUE
GROSSE POINTE FARMS, MI

PROPERTY INFORMATION

- Located in the heart of downtown Grosse Pointe Farms, The Hill
- 5,294 SF available on the second floor
- New build-out with high-end finishes
- Class A office building
- Locally owned and professionally managed
- Exterior and interior monument signage available
- Immediate occupancy

PROPERTY HIGHLIGHTS

- The building ownership has made significant investments to the asset completely renovating the lobby with high-end finishes and adding an entire third floor in 2005. Jumps, an A le carte Restaurant, is located on the first floor and offers breakfast, lunch and dinner.
- The building is managed, owned and was developed by the Russell Development Company.

CONTACT US

JAMES C. BECKER

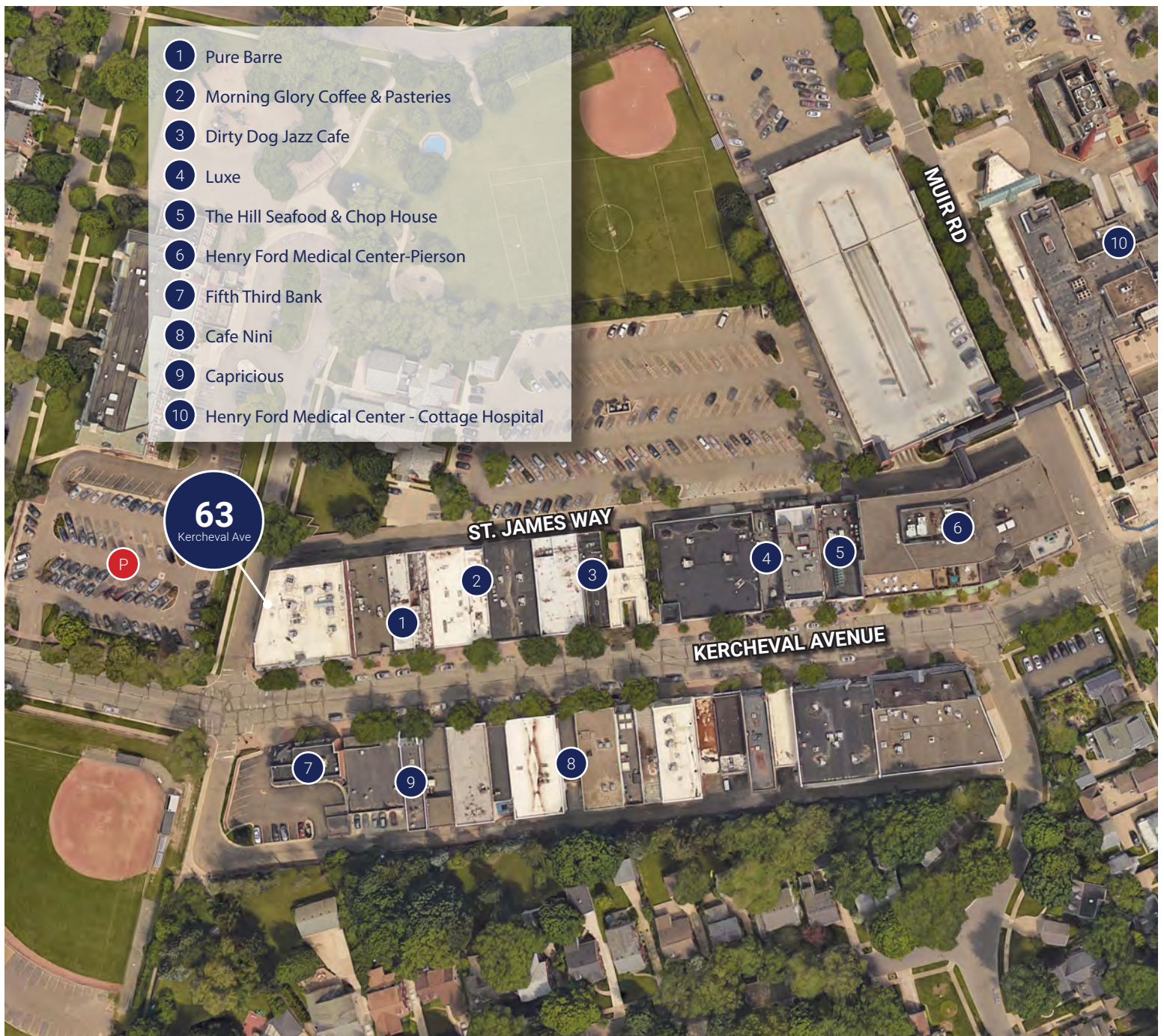
Principal & Managing Director
T: +1 313 209 4121
jim.becker@avisonyoung.com

MATTHEW BUSLEPP

Senior Associate
T: +1 313 209 4123
matt.buslepp@avisonyoung.com

**AVISON
YOUNG**

AREA MAP



CONTACT US

JAMES BECKER


Principal & Managing Director
T: +1 313 209 4121
jim.becker@avisonyoung.com

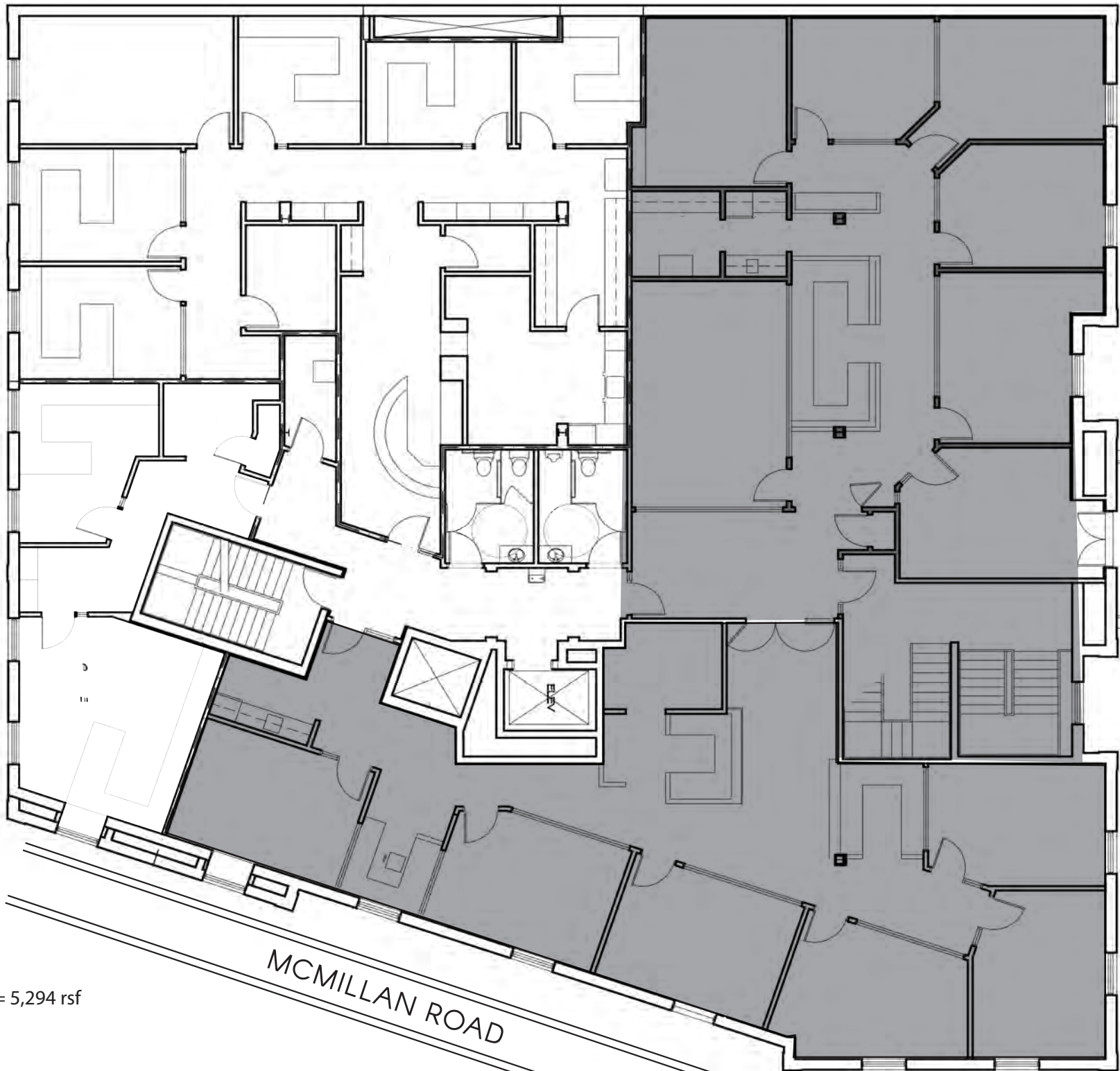
MATTHEW BUSLEPP

Senior Associate
T: +1 313 209 4123
matt.buslepp@avisonyoung.com



SECOND FLOOR AVAILABILITY

 = 5,294 rsf



KERCHEVAL AVENUE

MCMILLAN ROAD