

FOR LEASE

2640 Mathews Street SE Smyrna, GA 30080

NAIBrannen Goddard



Industrial | 3,102 SF

- 3,102 SF Available
- Built: 1998, metal construction
- Zoning: Light Industrial
- 16' Clear Ceiling Height
- Wet Sprinkler System
- 2 Electrical Panels: 120V/208V 3 Phase-4W and 277V/480V 3 Phase-4W
- 1 Drive-in Door
- 1 Bathroom
- 5 Parking Spaces



✉ **Jimmy Ku**
404 520 9370
jimmyku@naibg.com

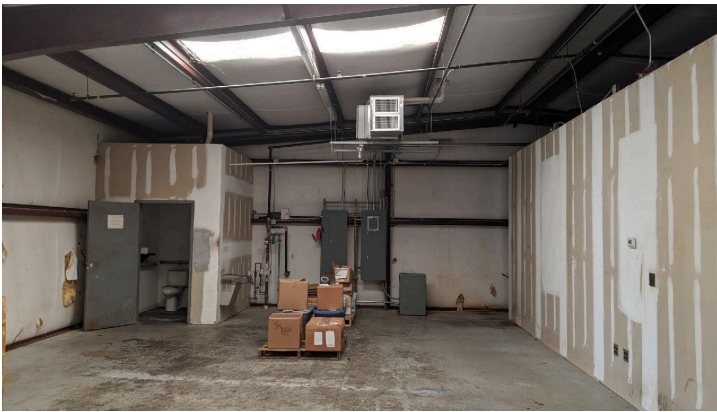
Information is deemed from reliable sources. No warranty is made as to its accuracy.

📍 **5555 Glenridge Connector, Ste 1100**
Atlanta, GA 30342
naibg.com

FOR LEASE

2640 Mathews Street SE Smyrna, GA 30080

NAIBrannen Goddard



FOR LEASE

2640 Mathews Street SE Smyrna, GA 30080

