



Office Suites For Lease



The Marston Building

427 C Street, San Diego, CA 92101



Josh Buchholz

d: 619 252 8576
josh@dmjpartners.com
license # 01761228

Doug Ceresia, CCIM, SIOR

d: 619 997 6848
doug@dmjpartners.com
license # 01314250

Matt Midura

d: 858 740 6314
matt@dmjpartners.com
license # 01826378

History of the Marston Building

George W. Marston was a well-known department store owner, politician and philanthropist here in San Diego and was often referred to as “San Diego’s First Citizen” or “The Father of Balboa Park.” As one of the founders of the San Diego YMCA, San Diego Public Library System and the Jumipero Serra Museum in Balboa Park, George Marston’s legacy lives on throughout San Diego today.

As Marston’s Department Store business expanded, he decided to purchase land in what is now Downtown San Diego and construct “The Historic Marston Building,” opened to the public in 1896 as Marston Family Department Store which operated until 1912 when the store was relocated across the street. Shortly thereafter the building was occupied by other retailers but was eventually converted to an office building in 1988, and the historic elements of the building continued to remain.

The Marston Building, once admired for its avant-garde structure, provides its tenants with an open atrium, elegant lighting and historic finishes throughout giving our tenants the experience of a modern office environment while maintaining the history of San Diego’s past.

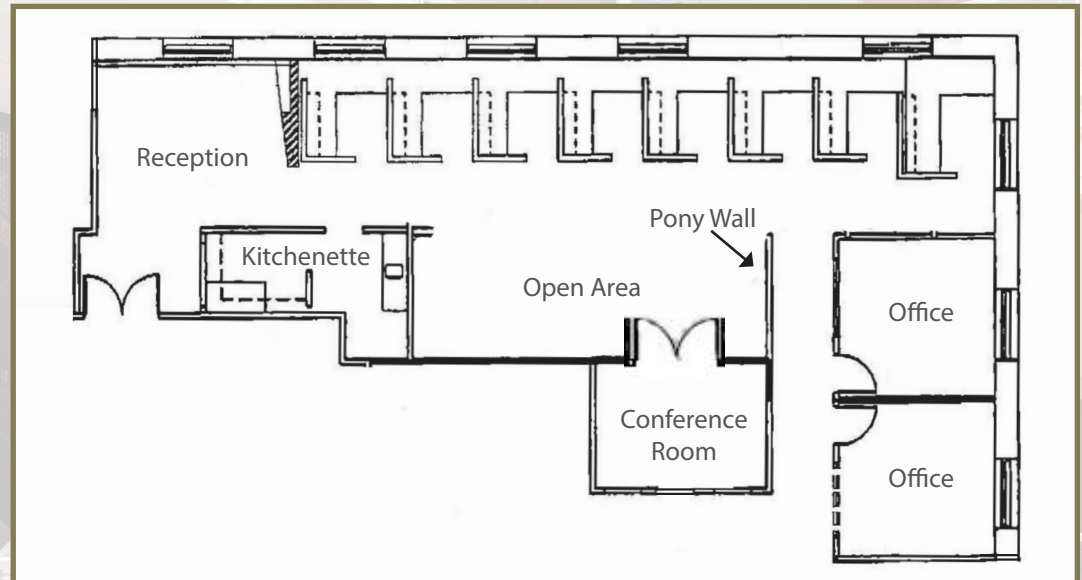
Property Features

- On-Site “European Style” Café
- Dramatic Ceiling Heights Throughout with Large Operable Windows and Tons of Natural Light
- Direct Access to the Trolley and Public Transportation
- Close Proximity to the Gaslamp Quarter, San Diego International Airport, Horton Plaza Shopping Mall, Federal and County Court Houses
- Numerous Parking Garages/Lots Located Within a Few Blocks of the Building, Providing Monthly Parking (Ask Agents for details)



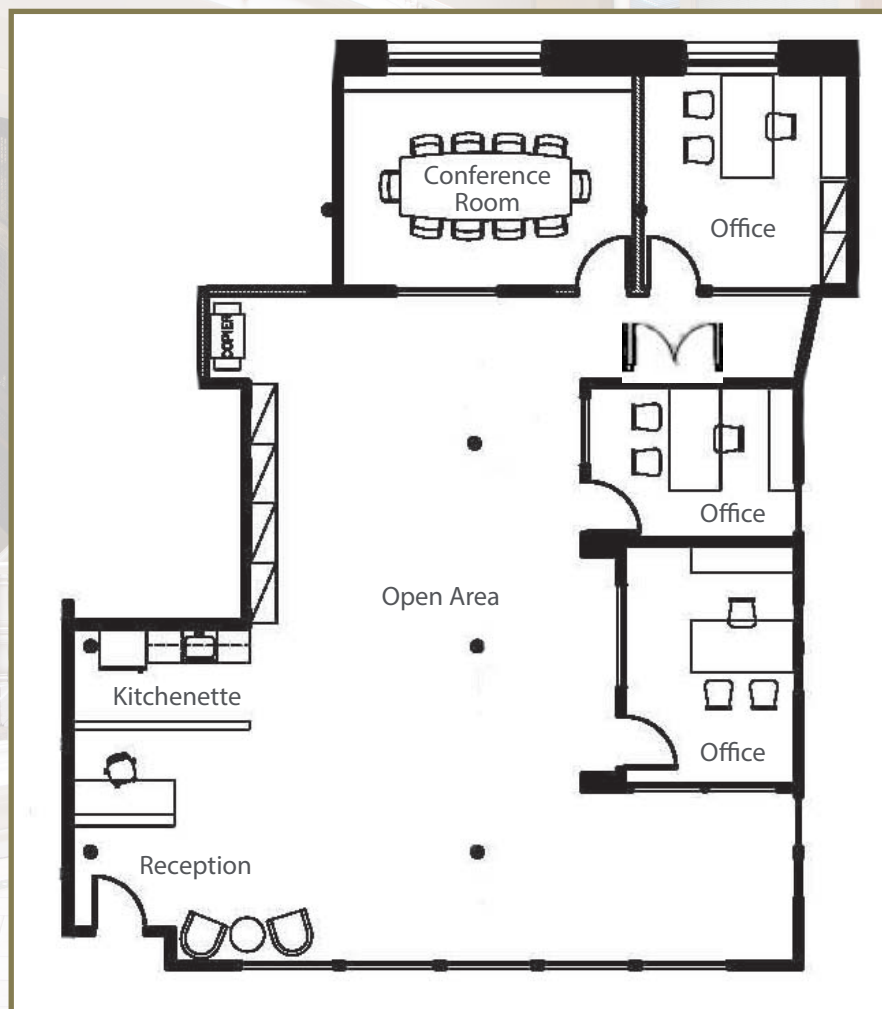
Suite 200 | ±2,042 RSF

- Lease Rate: \$2.15 plus Utilities
- Two Private Offices
- Eight Built In Work Stations
- Large Open Area
- Conference Room
- Professional Reception with waiting area
- Kitchenette with Sink
- Operable Windows Throughout
- Tall Ceilings with Abundant Natural Light
- Private Entrance off Corridor and Atrium
- Move In Ready!



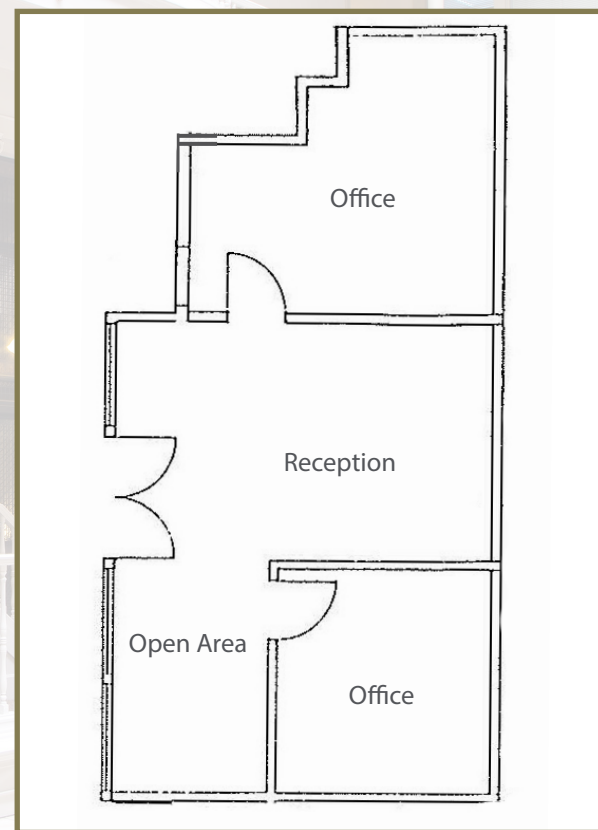
Suite 220 | ±2,077 RSF

- Lease Rate: \$2.15 plus Utilities
- Three Private Offices
- Large Open Area
- Conference Room
- Professional Reception with waiting area
- Kitchenette with Sink
- Operable Windows Throughout
- Tall Ceilings with Abundant Natural Light
- Private Entrance off Corridor and Atrium
- Available Now



Suite 400 | ±814 RSF

- Lease Rate: \$2.15 plus Utilities
- Two Private Offices
- Professional Reception with waiting area
- Operable Windows Throughout
- Tall Ceilings with Abundant Natural Light
- Private Entrance off Corridor and Atrium
- Move In Ready!





Office Suites For Lease



The Marston Building

427 C Street, San Diego, CA 92101



NO WARRANTY OR REPRESENTATION, EXPRESS OR IMPLIED, IS MADE AS TO THE ACCURACY OF THE INFORMATION CONTAINED HEREIN, AND THE SAME IS SUBMITTED SUBJECT TO ERRORS, OMISSIONS, CHANGE OF PRICE, RENTAL OR OTHER CONDITIONS, PRIOR SALE, LEASE OR FINANCING, OR WITHDRAWAL WITHOUT NOTICE, AND OF ANY SPECIAL LISTING CONDITIONS IMPOSED BY OUR PRINCIPALS NO WARRANTIES OR REPRESENTATIONS ARE MADE AS TO THE CONDITION OF THE PROPERTY OR ANY HAZARDS CONTAINED THEREIN ARE ANY TO BE IMPLIED.

619.630.4554
dmjpartners.com