



# 360 Crider Avenue

Moorestown, New Jersey

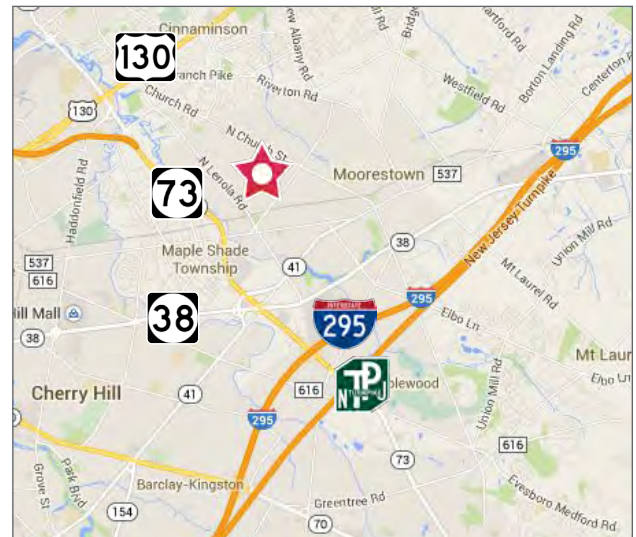
## Property Description

- 60,000± SF industrial building on 9.04± acres
- Loading platform served by one leveler with (2) 19'x12' doors & (2) 12'x12' doors
- (1) 18'x13' drive-in
- 13'6" - 16' clear ceiling heights
- Column spacing: 24' x 66'
- T-5 lighting
- Foam insulation roof with lifetime guarantee (provided routine treatment is performed)
- Public water and sewer
- Gas & radiant heat
- 3 phase, 220 volts, 2200 amps
- Parking for 140± vehicles
- Taxes (2016): \$60,500
- Zoning: SRI (Specially Restricted Industrial)

Sale Price **\$2,650,000**

**QUICK SETTLEMENT!**  
**POSSIBLE SALE LEASEBACK**  
**CONTACT ROY FOR DETAILS**

360 Crider Avenue is in close proximity to Routes 38 & 73 and is within 5 miles of Exit 4 of the NJ Turnpike and Exit 36 of I-295.



### PERFECT FOR MANUFACTURING OPERATION

On-Site Equipment Available for Sale

- 1 Ton JIB Cranes
- Bus Ducts
- 2 Spray Booths
- Compressed Air

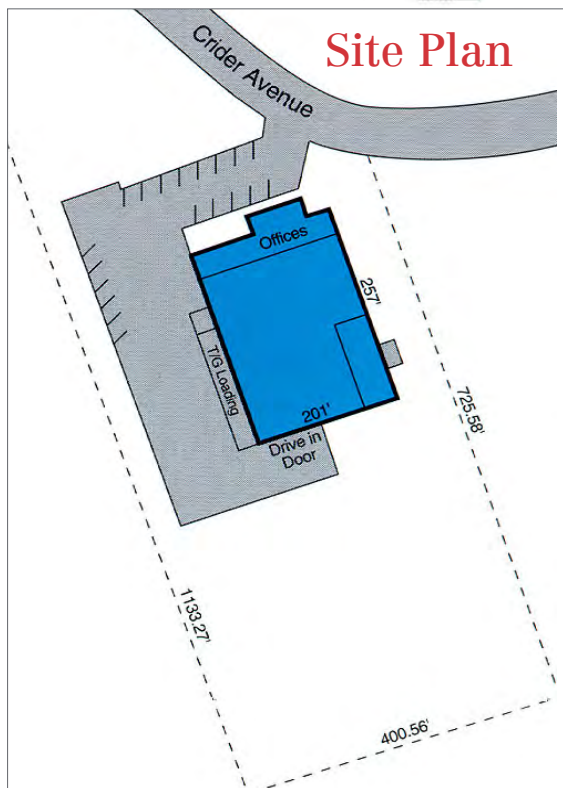
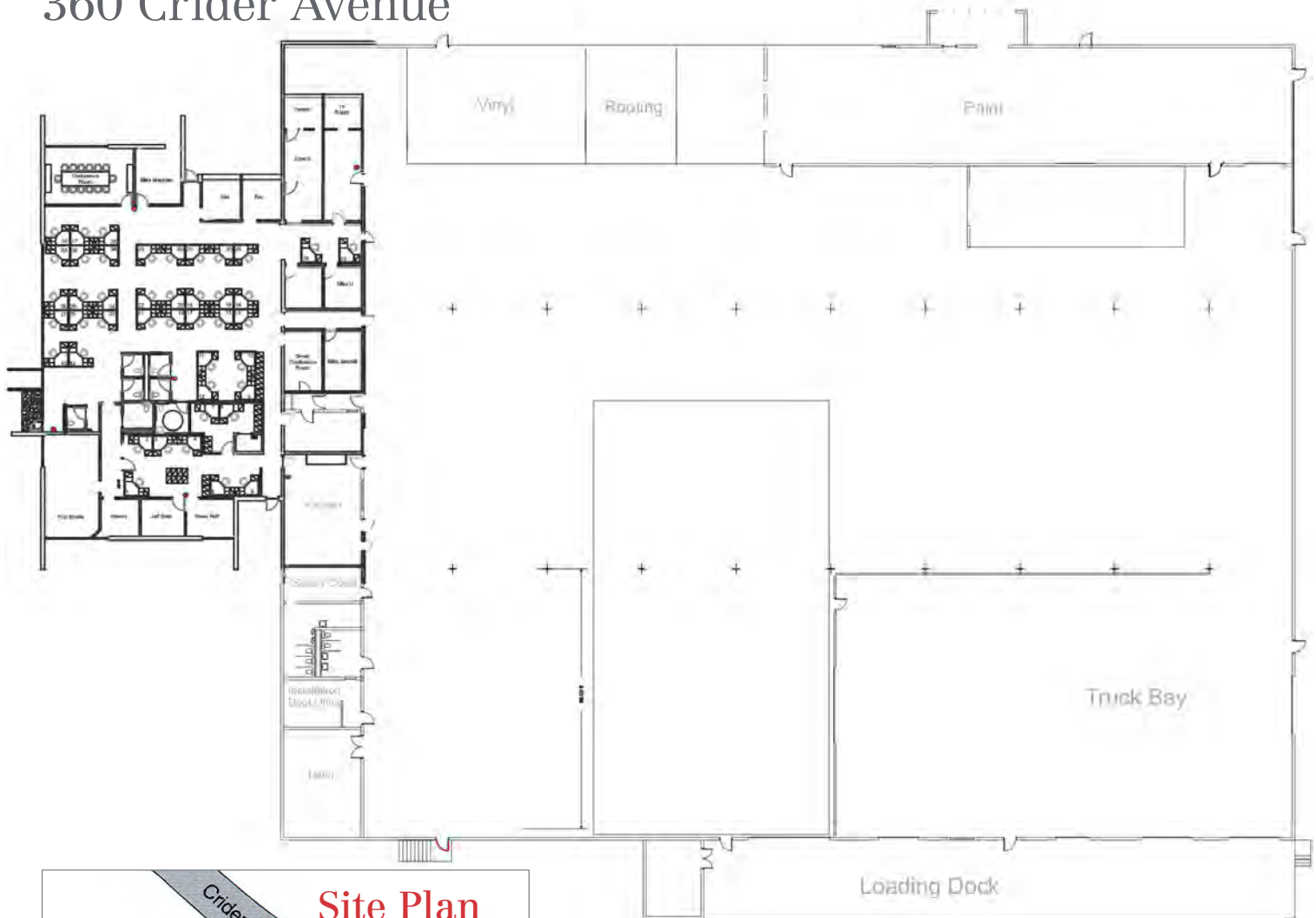
For more information:

**Roy Kardon, SIOR**

+1 610 246 7118 • roy.kardon@naimertz.com

Floorplan

# 360 Crider Avenue



For more information:

**Roy Kardon, SIOR**

+1 610 246 7118 • [roy.kardon@naimertz.com](mailto:roy.kardon@naimertz.com)

NO WARRANTY OR REPRESENTATION, EXPRESS OR IMPLIED, IS MADE AS TO THE ACCURACY OF THE INFORMATION CONTAINED HEREIN, AND THE SAME IS SUBMITTED SUBJECT TO ERRORS, OMISSIONS, CHANGE OF PRICE, RENTAL OR OTHER CONDITIONS, PRIOR SALE, LEASE OR FINANCING, OR WITHDRAWAL WITHOUT NOTICE, AND OF ANY SPECIAL LISTING CONDITIONS IMPOSED BY OUR PRINCIPALS NO WARRANTIES OR REPRESENTATIONS ARE MADE AS TO THE CONDITION OF THE PROPERTY OR ANY HAZARDS CONTAINED THEREIN ARE ANY TO BE IMPLIED.

21 Roland Avenue  
Mount Laurel, New Jersey  
+1 856 234 9600

[naimertz.com](http://naimertz.com)