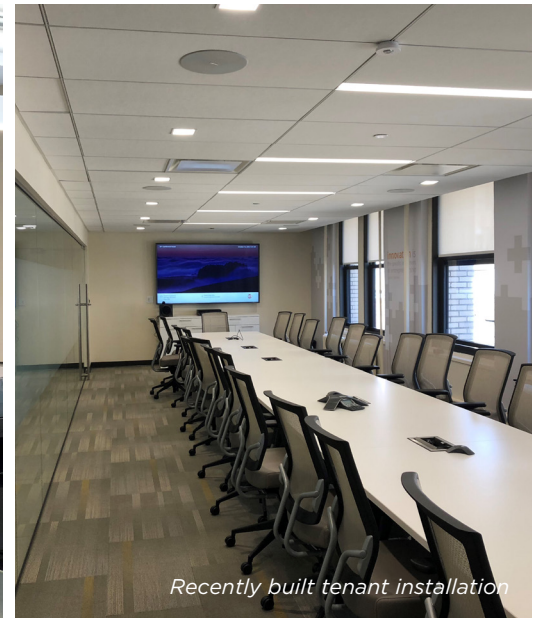


250
W 39 ST

RARE BIG BLOCK SPACE OPPORTUNITY FOR LEASE



ENTIRE 4TH AND 5TH FLOORS
27,754 RSF contiguous, can be leased separately



Recently built tenant installation

Bill Fressle
212 841 7566
william.fressle@cushwake.com

Will Golden
212 895 8929
will.golden@cushwake.com



A full commission computed and earned in accordance with the rates and conditions of our agency agreement with our principal, when received from our principal, will be paid to the cooperating broker who consummates a lease which is unconditionally executed and delivered by and between lessor and lessee (a copy of the rates and conditions referred to above is available upon request).

250
W 39 ST

SPACE INFORMATION



BUILDING FEATURES:

- 17-story, 208K RSF Art Deco office building in Times Square South/Fashion District submarket
- Planned lobby renovation
- Attended lobby
- 24/7 building access
- 3 passenger elevators, 2 freight elevators
- Wired for Verizon Fios and Time Warner
- Easy access to Penn Station, Port Authority, PATH and subways (1, 2, 3, E, F, M, N and R)

SPACE FEATURES:

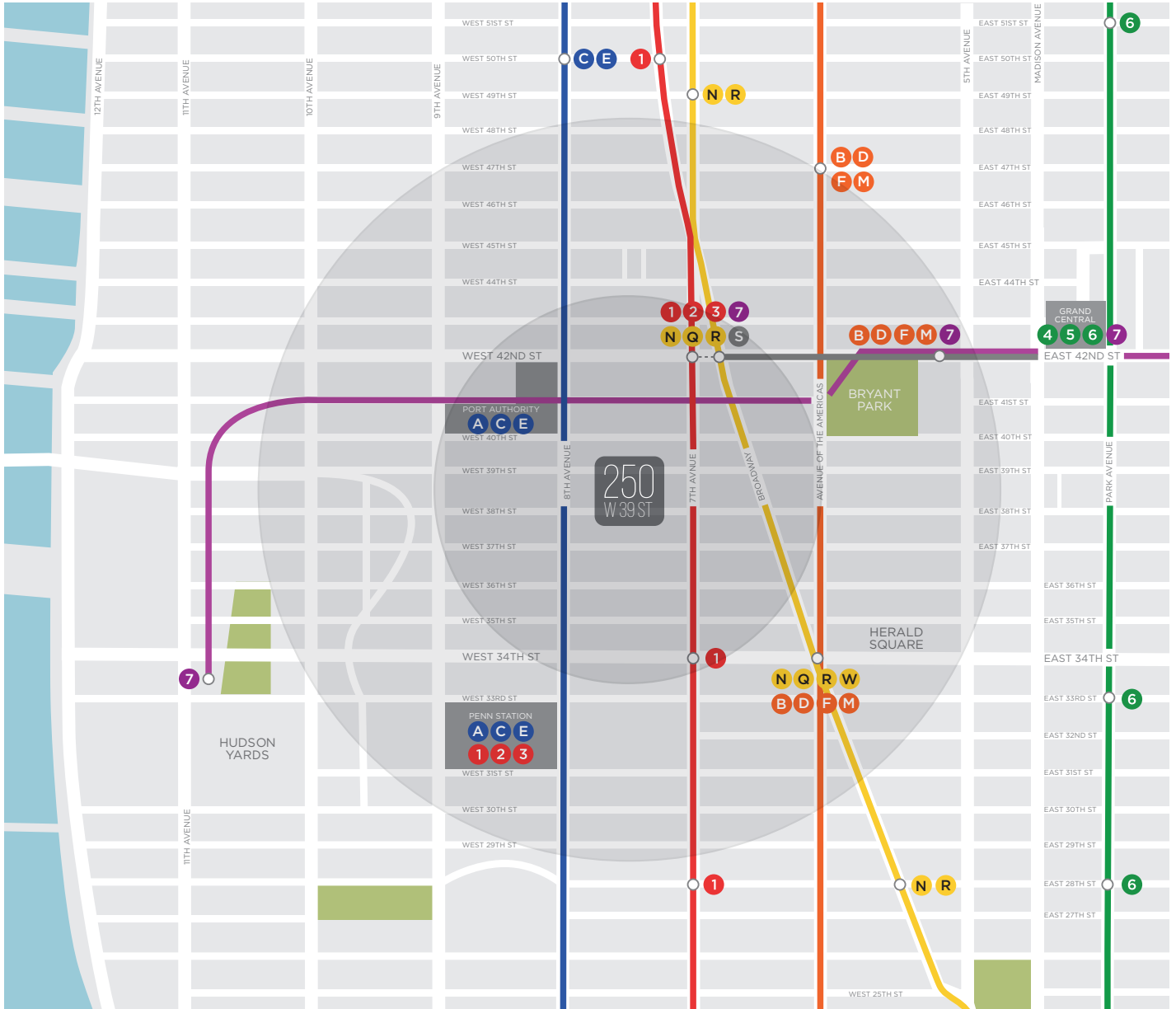
- Full floor presence
- 27,754 RSF contiguous block of space - E4, E5 (can be leased separately)
- 10'9" ceiling heights
- Landlord can deliver turnkey space
- Immediate possession



Photos reflect a recently built tenant installation

250 W 39 ST

AREA MAP



250 |
W 39 ST

SPACE PHOTOS



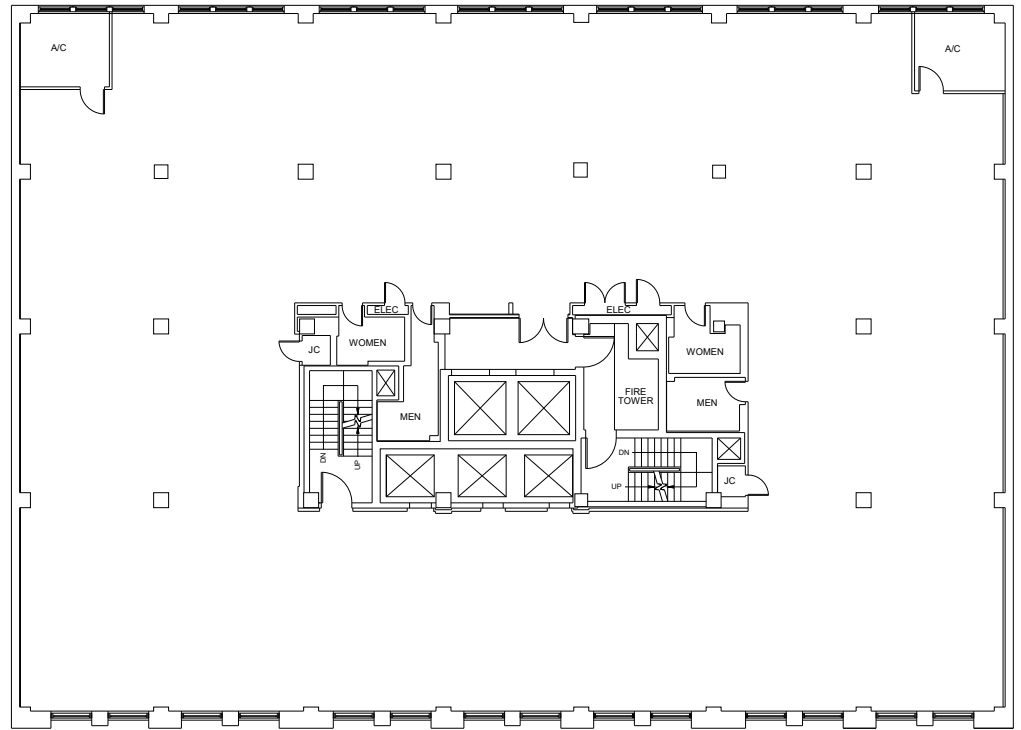
Photos reflect a recently built tenant installation

250
W 39 ST

FLOOR PLANS

ENTIRE 4TH FLOOR

13,877 RSF



ENTIRE 5TH FLOOR

13,877 RSF

