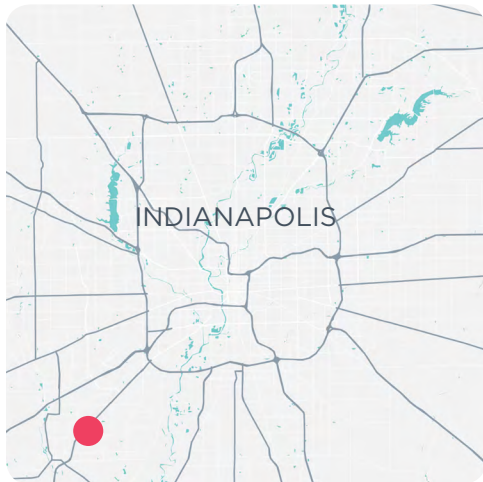


**LEASE**

**RETAIL**



**▶ UP TO 2,510 SF RETAIL SPACE IN CAMBY**



**AVAILABLE SPACE**

1,104-2,510 SF

**LEASE RATE**

\$15/SF NNN

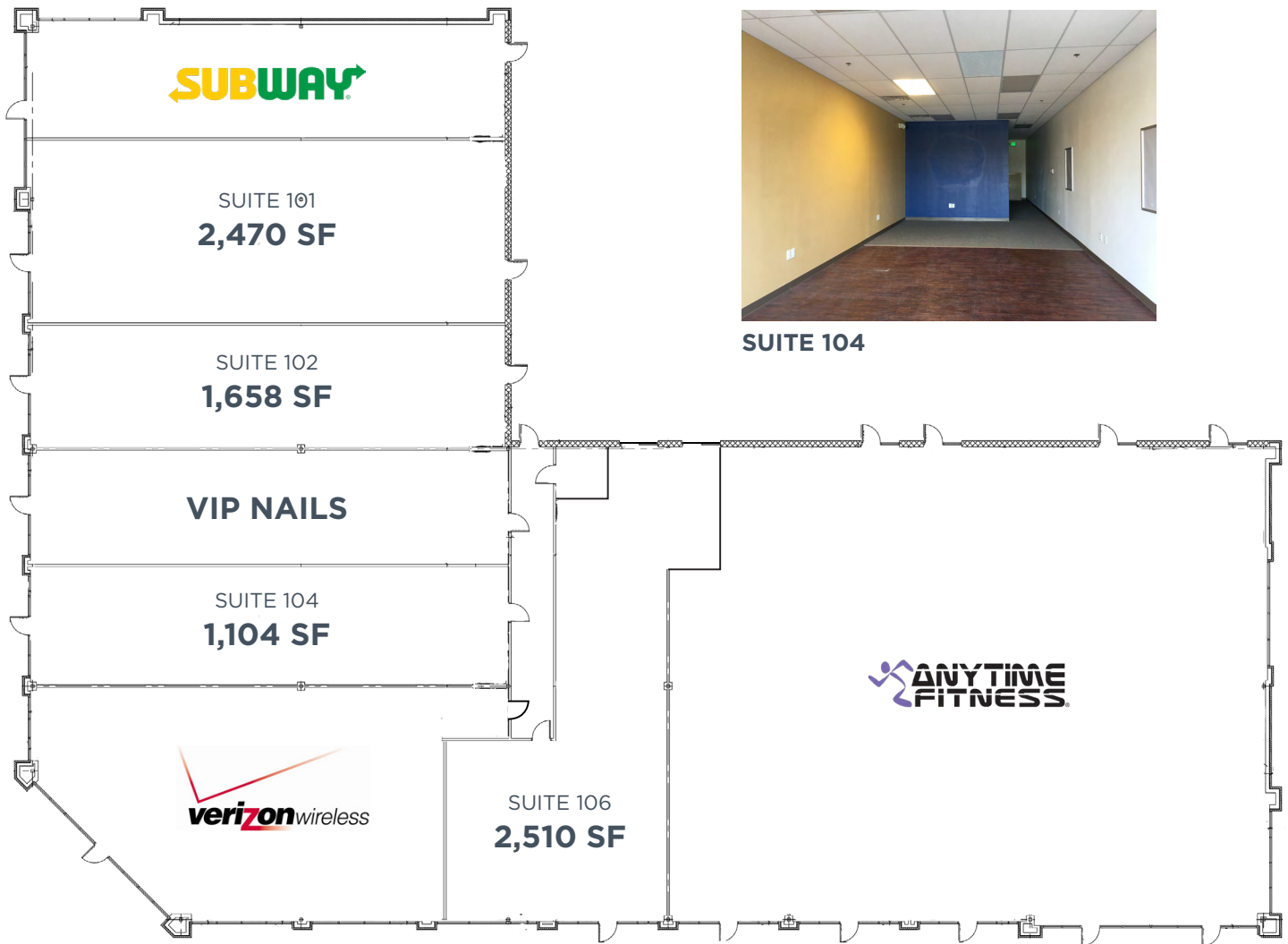
- + ±21,700 SF retail center
- + Available space includes a former dine-in restaurant and insurance office
- + Monument signage facing SR 67
- + Shadow anchored by Meijer, area retailers include Dollar Tree, Menards, Walmart Supercenter, and Goodwill

9339 Priority Way West Drive  
Suite 120  
Indianapolis, IN 46240  
317.663.6000

**TABATHA REID**  
Associate  
O 317.663.6077  
C 951.837.1092  
tabatha.reid@rcre.com

**GREG SMITH**  
Vice President  
O 317.663.6081  
C 317.513.3544  
greg.smith@rcre.com

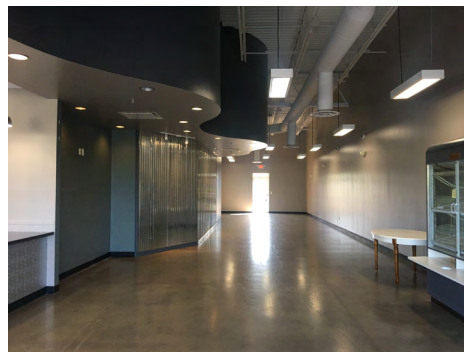
## FLOOR PLAN



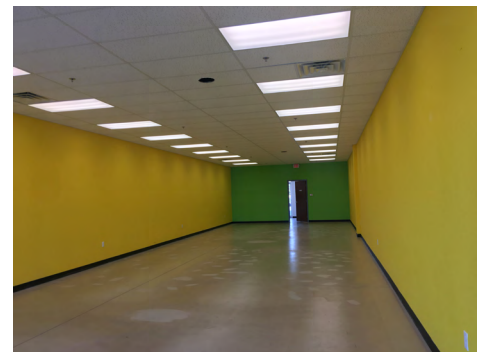
SUITE 104



SUITE 101



SUITE 101



SUITE 102

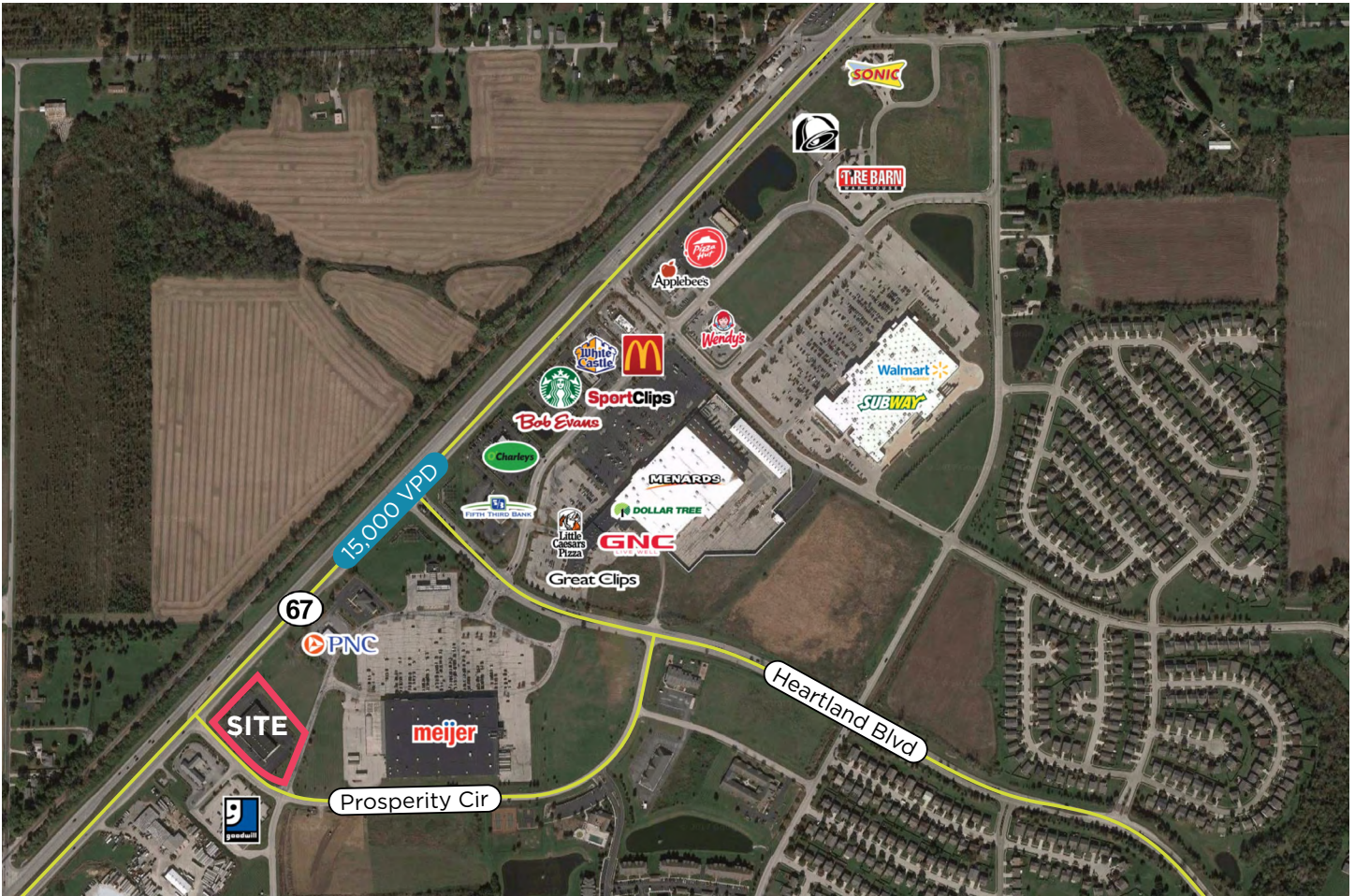
9339 Priority Way West Drive  
Suite 120  
Indianapolis, IN 46240  
317.663.6000

**TABATHA REID**  
Associate  
O 317.663.6077  
C 951.837.1092  
tabatha.reid@rcr.com

**GREG SMITH**  
Vice President  
O 317.663.6081  
C 317.513.3544  
greg.smith@rcr.com



# AERIAL



## DEMOGRAPHICS\*

	1 MILE	3 MILES	5 MILES
Population	3,154	25,188	48,180
Households	1,163	9,414	17,871
Average HH Income	\$79,471	\$74,689	\$77,662
Median Age	34.9	36.4	36.7

\*SitesUSA 2017 Estimated

**TABATHA REID**  
 Associate  
 ☎ 317.663.6077  
 ☎ 951.837.1092  
 tabatha.reid@rcre.com

**GREG SMITH**  
 Vice President  
 ☎ 317.663.6081  
 ☎ 317.513.3544  
 greg.smith@rcre.com



in #growIndy

The information contained herein was obtained from sources we consider reliable. We cannot be responsible for errors, omissions, prior sale or lease, withdrawal from the market or change in price. Seller and broker make no representation as to the environmental condition of the property and recommend the lessee's/purchaser's independent investigation.

9339 Priority Way West Drive  
 Suite 120  
 Indianapolis, IN 46240  
 317.663.6000