

28367

DAVIS PARKWAY  
WARRENVILLE

# RARE 3,000-SF Lease in Cantera Commons

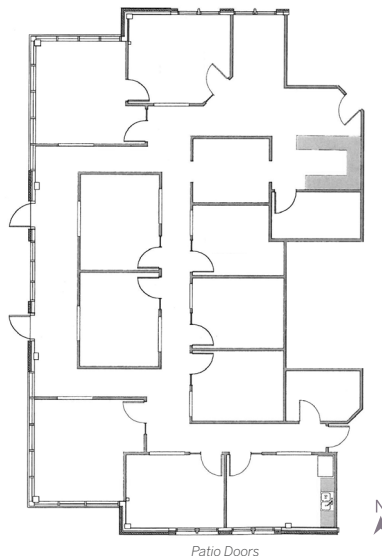


SERENE park-like setting

## SUITE 301

RENTAL RATE: \$20.00 MG

- Reception area with built-in desk
- Two executive private offices featuring floor-to-ceiling windows
- Six additional private offices with vertical sidelights
- Conference room
- Kitchen with sink, refrigerator, and microwave
- Private patio with full-glass doors



WITHIN WALKING DISTANCE  
to numerous nearby amenities  
including restaurants, hotels, retail,  
banking, fitness, and daycare

TWO MINUTES FROM  
the Windfield Road exchange off I-88

For more information or to arrange an inspection, please call:

JIM HIGDON  
630 869 5227 | [jhigdon@bradfordallen.com](mailto:jhigdon@bradfordallen.com)

JULIE JOHNSON  
630 869 5230 | [jjohnson@bradfordallen.com](mailto:jjohnson@bradfordallen.com)

Exclusive Leasing Agent

**BA** BRADFORD  
ALLEN