

# OFFICE SPACE FOR SUBLEASE

12420 Milestone Center Drive  
Germantown, Maryland 20876



## Property Highlights

- 21,501 square feet available on the 2nd floor
- Sublease opportunity through December 31, 2019
- High-end finishes throughout with existing furniture negotiable
- Prominent location directly off I-270 via Ridge Road
- Abundant parking available at a ratio of 3.9 spaces per 1,000 rentable square foot
- On-site amenities include a fitness Center, conferencing facilities, concierge services and deli with catering capabilities
- Situated in a beautiful campus environment within minutes from the Shops at Seneca Meadows, Milestone Shopping Center, and Germantown Town Center
- Trophy office building with LEED Gold Certification



HIGH-END FINISHES



ABUNDANT PARKING



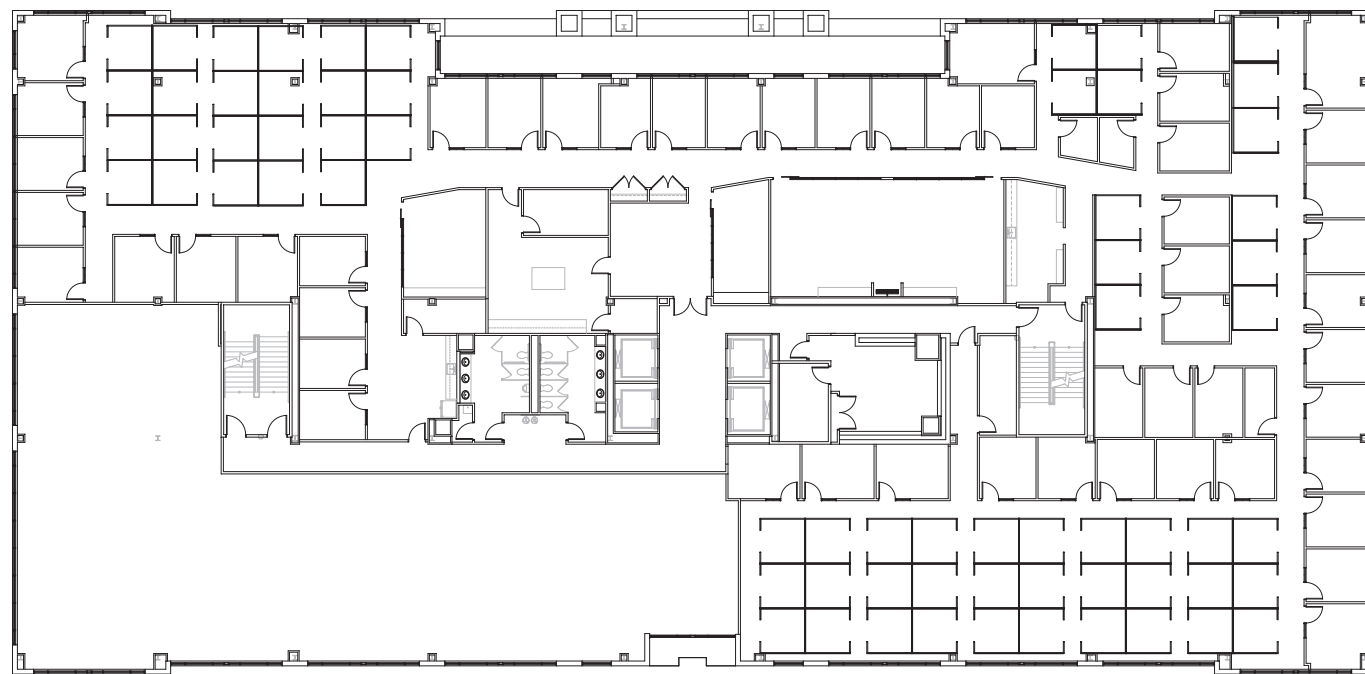
BEAUTIFUL CAMPUS

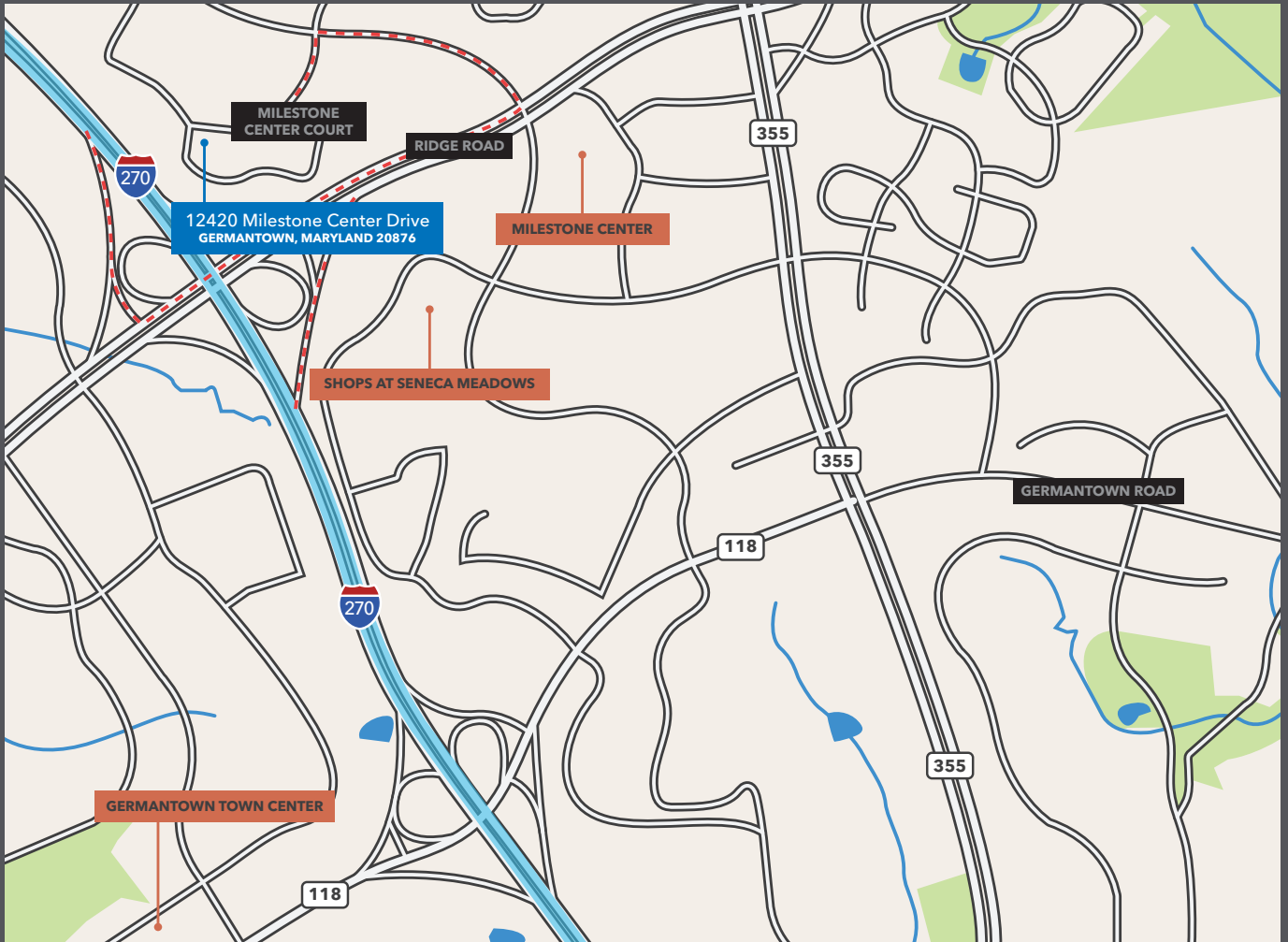


LEED GOLD



## Floor Plan | 2<sup>nd</sup> Floor | 21,501 SF Available





## For More Information

### Susan Kay

Senior Vice President  
301.896.9133  
susan.kay@transwestern.com

### Mark Boyce

Vice President  
301.896.9090  
mark.boyce@transwestern.com

### Joe Fitzpatrick

Associate  
301.896.9039  
joe.fitzpatrick@transwestern.com



6700 Rockledge Drive  
Suite 500-A  
Bethesda, Maryland 20817  
301.571.0900

For more information, visit  
us at [www.transwestern.com](http://www.transwestern.com)

Transwestern is a privately held real estate firm specializing in agency leasing, property and facilities management, tenant advisory, capital markets, development, research and sustainability. The fully integrated global enterprise leverages competencies in office, industrial, retail, multifamily and healthcare properties to add value for investors, owners and occupiers of real estate. Transwestern facilitates better decision-making for clients by combining penetrating local market intelligence and macro-market research through its affiliate, Delta Associates. Transwestern has 34 U.S. offices and assists clients through more than 181 offices in 40 countries as part of a strategic alliance with Paris-based BNP Paribas Real Estate.