

936 BROADWAY



CONCEPTUAL RENDERING

SPACE DETAILS

LOCATION

Southeast corner of East 22nd Street

APPROXIMATE SIZE

Ground Floor 5,441 SF

Basement 1,666 SF

CEILING HEIGHT

Ground Floor 17 FT 6 IN

Basement 9-11 FT

FRONTAGE

40 FT on Broadway

140 FT on East 22nd Street

TERM

Negotiable

POSSESSION

Immediate

SITE STATUS

Formerly Wolf Home and MDRN Furniture

RETAIL NEIGHBORS

Design Within Reach, Made by We, Flying Tiger Copenhagen, Lego, Ann Taylor, Alo Yoga (coming soon), Brooks Brothers, Eataly, ABC Carpet and Home, Equinox Fitness Club, Club Monaco and L'Occitane en Provence

OFFICE NEIGHBORS

Grey Group, Tiffany & Co., Credit Suisse, Sony, Wilhelmina Models, Perkins Eastman, Bombas, Rachel Zoe Creation Line, MasterCard, and The Simons Foundation

COMMENTS

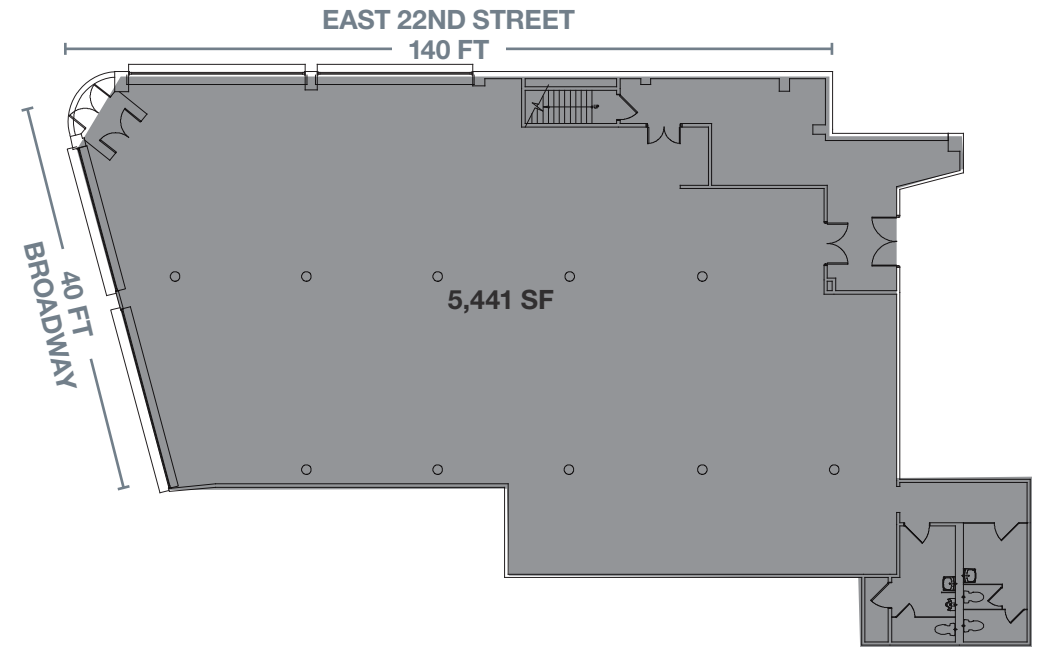
High profile Flatiron District corner with strong retail co-tenancy

A short distance from Madison Square Park and Union Square

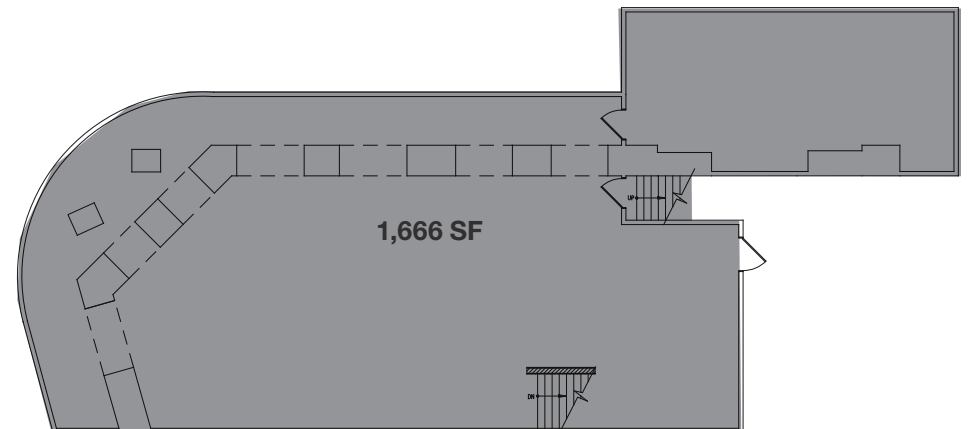
Across the street from the famous Flatiron Building

In close proximity to the 

GROUND FLOOR



BASEMENT



AREA NEIGHBORS



AREA RETAIL



CONTACT EXCLUSIVE AGENTS

ROSS BERKOWITZ
212.916.3388
ross.berkowitz@ngkf.com

RICHARD GELBER
212.916.3366
richard.gelber@ngkf.com

JOSHUA STRAUSS
212.331.0126
joshua.strauss@ngkf.com



NGKF.COM

© 2020 NEWMARK KNIGHT FRANK RETAIL. The information contained herein has been obtained from sources deemed reliable but has not been verified and no guarantee, warranty or representation, either express or implied, is made with respect to such information. Terms of sale or lease and availability are subject to change or withdrawal without notice.