



Please call listing agents for showing instructions

For Lease  
**OFFICE/RETAIL SUITES**

Offered at \$0.80 psf, Modified Gross



306 N. Spokane Street, Post Falls, Idaho

**Property Overview:**

“Milltown Center” is a 10 suite commercial building located in Post Falls, just off Spokane Street and south of I-90. This property has recently been updated with a new façade and suite sizes range from 700 square feet to 2,800 square feet. Each suite has its own A/C, forced air furnace and separate electric/gas meters. Ample parking. Excellent visibility. Monument sign space is available.

**Property Details:**

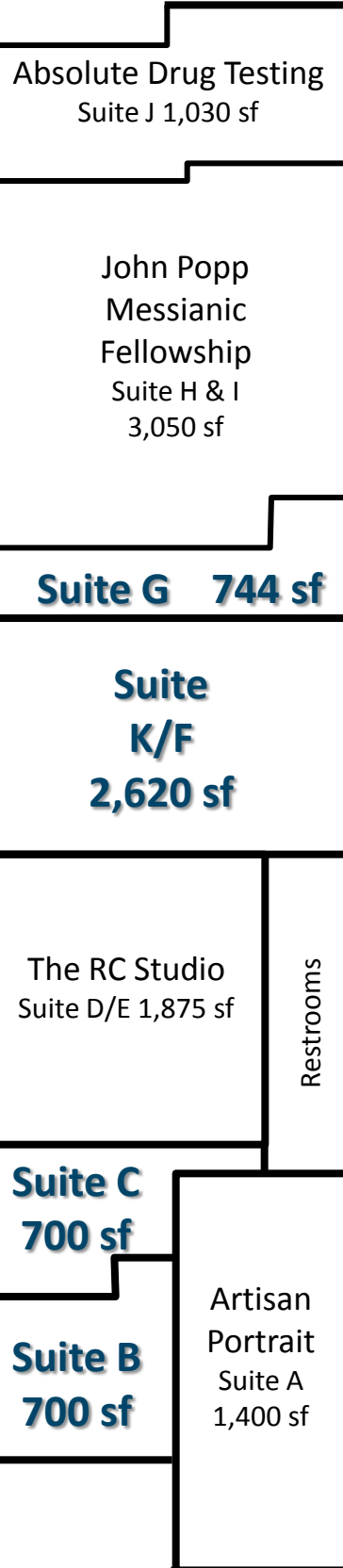
|                               |                         |
|-------------------------------|-------------------------|
| <b>Rental Rate:</b>           | \$0.80 PSF              |
| <b>Monthly Rent:</b>          | \$560-\$2,691 Per Month |
| <b>Lease Type:</b>            | Modified Gross          |
| <b>Property Type:</b>         | Commercial Building     |
| <b>Class of Space:</b>        | B                       |
| <b>Tenancy:</b>               | Multiple                |
| <b>Gross Building Area:</b>   | 12,768 sf               |
| <b>Building Dimensions:</b>   | Irregular               |
| <b>Year Built:</b>            | 1994                    |
| <b>Gross Land Area:</b>       | 0.983 Acres             |
| <b>Land Dimensions:</b>       | 312 x 142               |
| <b>County:</b>                | Kootenai                |
| <b>Tax ID Number:</b>         | 101219                  |
| <b>Parcel Number:</b>         | P6900022001A            |
| <b>Tax Year &amp; Amount:</b> | 2013: \$12,844          |
| <b>Zoning:</b>                | CCS                     |



306 N. Spokane Street, Post Falls, Idaho  
**FLOOR PLAN**

**PARKING LOT**

**ALLEY ACCESS**

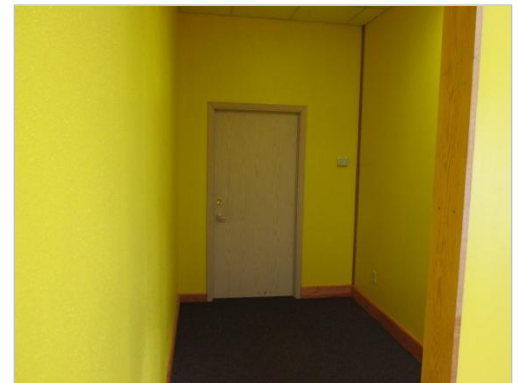


**SPOKANE STREET**



# 306 N. Spokane Street, Post Falls, Idaho

## IMAGES







# 306 N. Spokane Street, Post Falls, Idaho

## IMAGES







# 306 N. Spokane Street, Post Falls, Idaho

## IMAGES

