



OFFICE BUILDING FOR LEASE

1206 LASKIN ROAD

VIRGINIA BEACH, VA 23451



1206 LASKIN ROAD

VIRGINIA BEACH, VA 23451

PROPERTY OVERVIEW



OFFERING SUMMARY

Available SF: 825 - 5,561 SF

Lease Rate: \$17.00 SF/yr (Full Service)

Building Size: 40,000 SF

AVAILABLE SPACES **SF**

Suite 111 825 SF

Suite 120 3,306 - 5,561 SF

Suite 150 2,255 - 5,561 SF

Suite 205 1,380 SF

Suite 251 1,738 SF

PROPERTY OVERVIEW

40,000 square foot, two-story brick office building with 24-hour building access.

PROPERTY HIGHLIGHTS

- Conveniently located on Laskin Road at Birdneck Road
- Easy access to I-264
- Close proximity to Virginia Beach Oceanfront and NAS Oceana

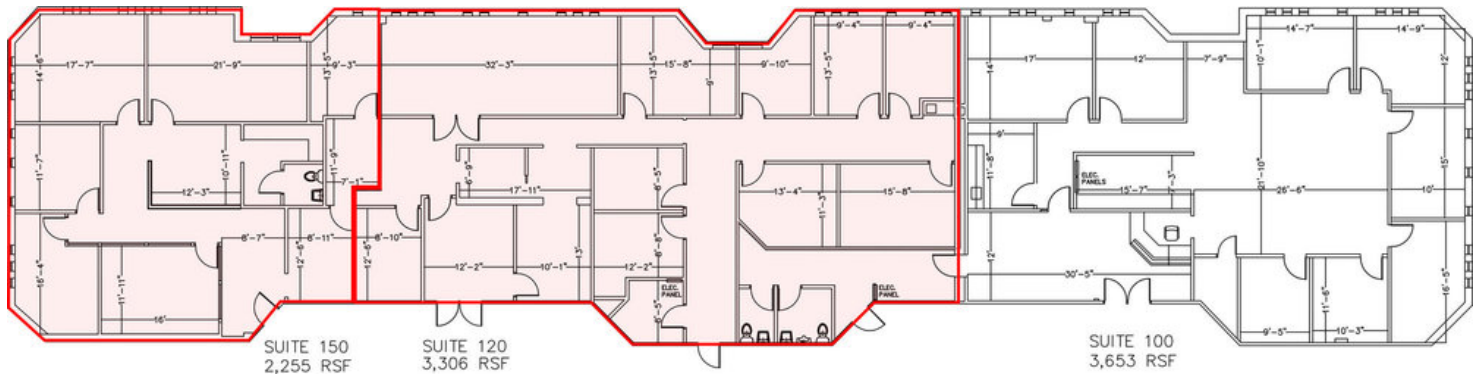
DEMOGRAPHICS

	1 Mile	3 Miles	5 Miles
Total Households:	5,351	25,429	40,434
Total Population:	10,931	56,977	96,417
Average HH Income:	\$68,444	\$84,218	\$84,792

1206 LASKIN ROAD

VIRGINIA BEACH, VA 23451

SUITE 120 & 150

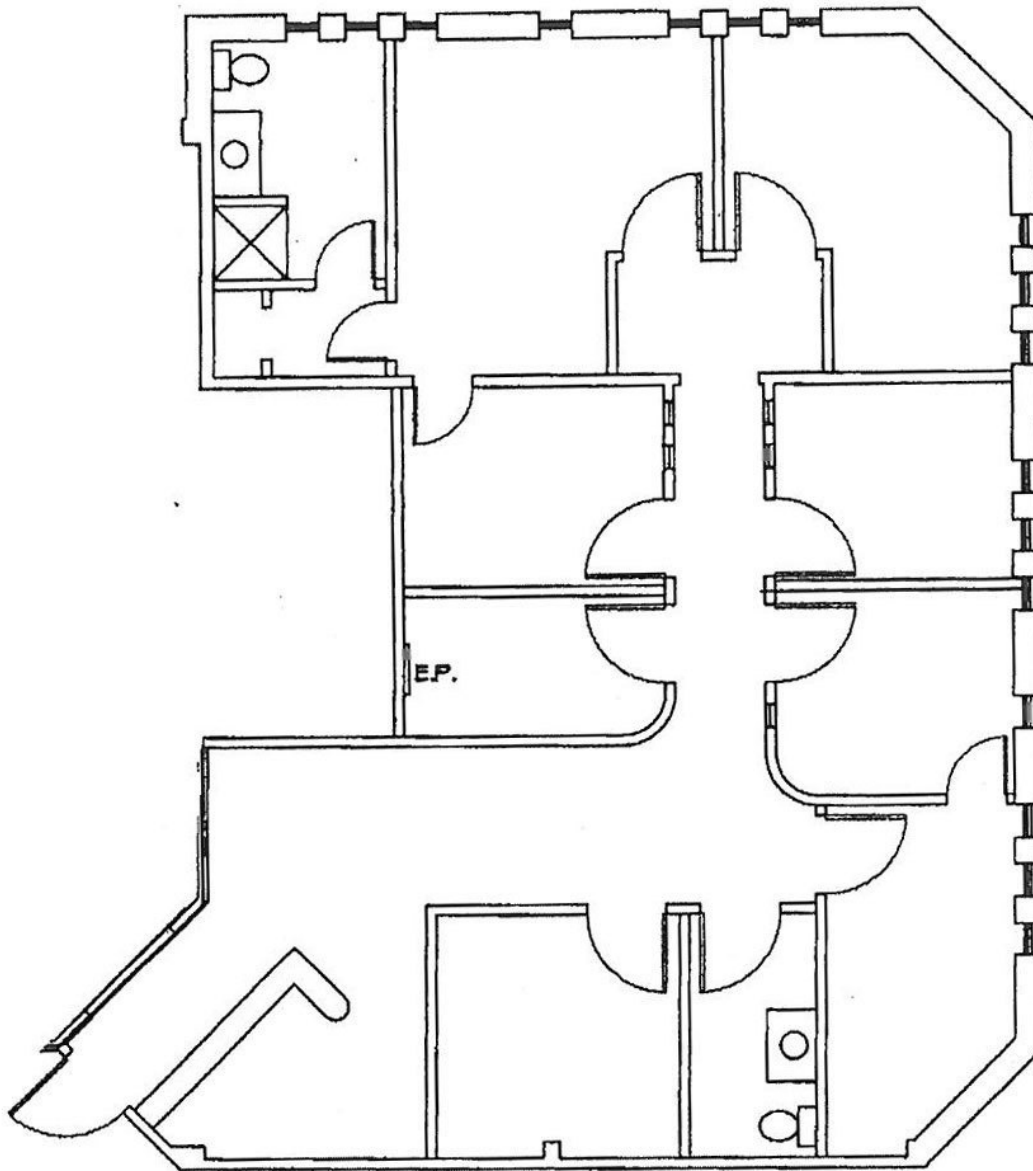


1 SUITE 120 & 150
5,561 SF - Can be subdivided as shown

1206 LASKIN ROAD

VIRGINIA BEACH, VA 23451

SUITE 205

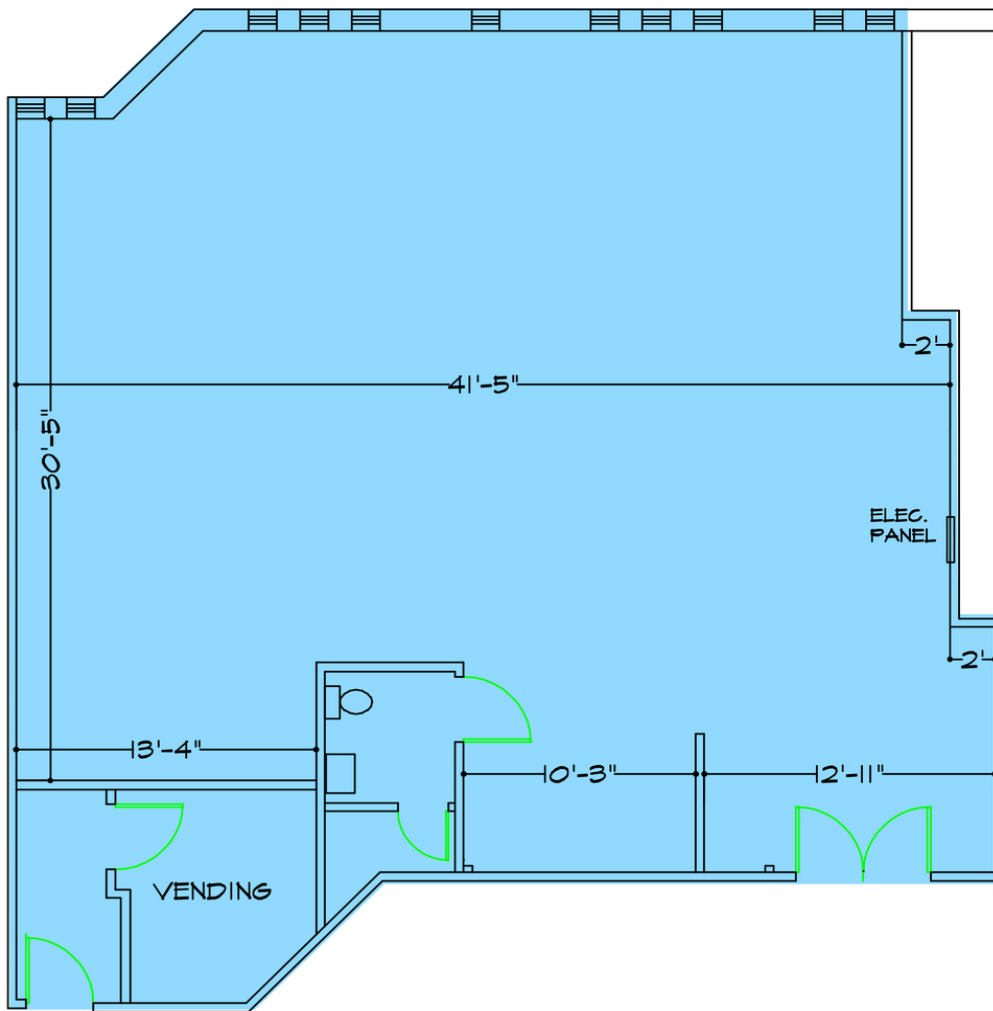


2 SUITE 220
1,380 Square Feet

1206 LASKIN ROAD

VIRGINIA BEACH, VA 23451

SUITE 251



3 SUITE 251
1,738 Square Feet



Vivian L. Turok
Senior Vice President
757.497.2113
Vturok@divaris.com

Elizabeth C. Paasch
Assistant Vice President
757.333.4322
Epaasch@divaris.com



The information contained herein should be considered confidential and remains the sole property of Divaris Real Estate, Inc. at all times. Although every effort has been made to ensure accuracy, no liability will be accepted for any errors or omissions. Disclosure of any information contained herein is prohibited except with the express written permission of Divaris Real Estate, Inc.