

# 465 WEST BROADWAY

BETWEEN HOUSTON & PRINCE STREETS

**Newmark  
Knight Frank**  
[www.ngkf.com/retail](http://www.ngkf.com/retail)

For further information, please contact our exclusive agents:

**Matthew S. Krell**  
**Adam Weinblatt**

Senior Managing Director  
Associate Director

212.372.2254  
212.372.2103

[mkrell@ngkf.com](mailto:mkrell@ngkf.com)  
[aweinblatt@ngkf.com](mailto:aweinblatt@ngkf.com)





# 465 WEST BROADWAY

BETWEEN HOUSTON & PRINCE STREETS






## • STREET MAP •

### SITE DETAILS

- GROUND LEVEL: APPROXIMATELY 3,000 SF
- LOWER LEVEL: APPROXIMATELY 1,500 SF
- FRONTAGE: APPROXIMATELY 27' ON W BROADWAY
- CEILINGS: APPROXIMATELY 12'
- TERM: LONG OR SHORT
- POSSESSION: IMMEDIATE
- ASKING RENT: UPON REQUEST

### COMMENTS

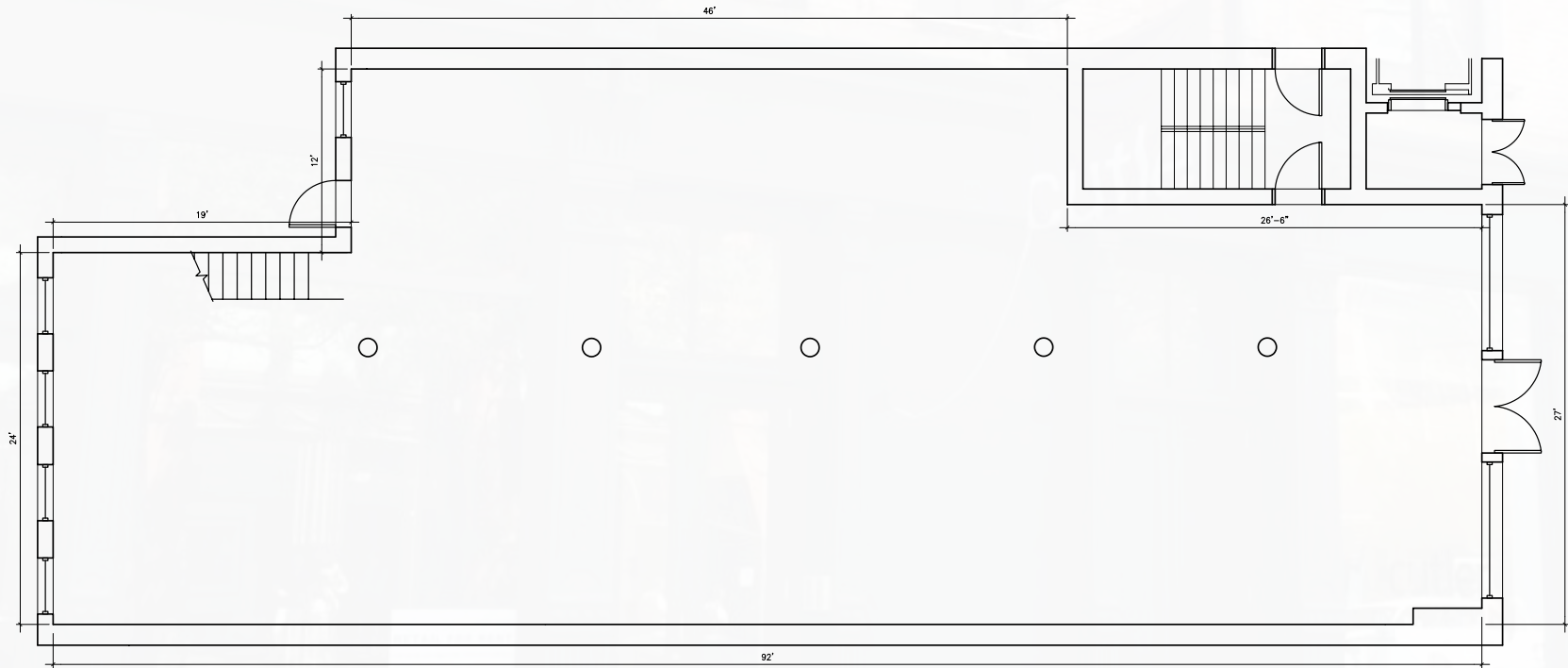
- BEAUTIFULLY BUILT OUT SOHO AVAILABILITY IN MOVE IN CONDITION.
- VIBRANT NATURAL LIGHT THROUGHOUT THE GROUND AND SELLING LOWER LEVEL.
- MAXIMIZED VISIBILITY WITH SLEEK STORE-FRONT AND FLAGPOLE BRANDING.
- LIVELY MIX OF LOCAL, REGIONAL AND INTERNATIONAL RETAILERS IMMEDIATELY SURROUNDING THE SPACE.

<p><b>HOUSTON STREET</b></p>  <p>KEITO</p> <p>LUMAS</p> <p>Seraphine</p>  <p>AVEDA</p> <p>BILLIONAIRE BOY CLUB</p> <p>G-SHOCK</p> <p>benefit</p>  <p>SPORTMAX</p>	<p style="writing-mode: vertical-rl; transform: rotate(180deg);"><b>WEST BROADWAY</b></p> <p>+ BOS CAMINOS +</p> <p>Kush Fine Art</p> <p>ARI</p> <p>★ 465 WEST BROADWAY</p> <p>cutler</p> <p>Sadelle's</p> <p>MARTIN-LAWRENCE GALLERIES</p> <p>giggle</p>  
<p><b>PRINCE STREET</b></p> <p>Aesop</p> <p>CHOBANI</p> <p>Happy Socks</p> <p>ROBERT MARC</p> <p>MOLESKINE</p> <p>VILEBREQUIN</p> <p>LA PERLA</p> <p>MAXSTUDIO</p> <p>MAUD FRIZON</p> <p>PINKO</p> <p>DKNY</p> <p>TOUS</p> <p>EMPORIO ARMANI</p>	<p style="writing-mode: vertical-rl; transform: rotate(180deg);"><b>WEST BROADWAY</b></p> <p>FRENCH CONNECTION</p> <p>BIRCHBOX+</p> <p>EG</p> <p>SCAVOLINI</p> <p>ALEX AND ANI</p> <p>SEE</p> <p>CROWN</p> <p>LUK</p> <p>ELIE TAHARI</p> <p>m0851</p> <p>JAMALI</p> <p>Vera Bradley</p> <p>HERVE LEGER</p>
<p><b>SPRING STREET</b></p> <p>DSQUARED2</p> <p>Lepetto</p> <p>LADUREE</p> <p>Beaufort</p> <p>Fekkai</p> <p>for all mankind</p> <p>LENSCRAFTERS</p>	<p style="writing-mode: vertical-rl; transform: rotate(180deg);"><b>WEST BROADWAY</b></p> <p>REISS</p> <p>EILEEN FISHER</p> <p>Jeremy Magley NYC</p>

# AREA RETAILERS



# FLOOR PLAN



NOTE: ALL DIMENSIONS ARE APPROXIMATE

**Newmark  
Knight Frank**  
[www.ngkf.com/retail](http://www.ngkf.com/retail)

For further information, please contact our exclusive agents:  
**Matthew S. Krell** Senior Managing Director  
**Adam Weinblatt** Associate Director

212.372.2254  
212.372.2103

[mkrell@ngkf.com](mailto:mkrell@ngkf.com)  
[aweinblatt@ngkf.com](mailto:aweinblatt@ngkf.com)

