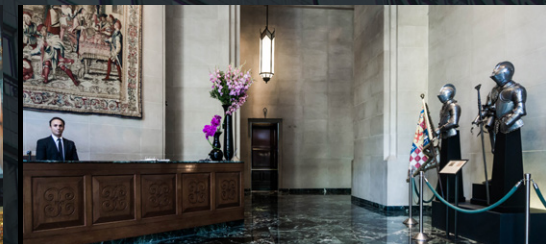


667

MADISON AVENUE



667 MADISON AVENUE

ABSOLUTE FINEST PREBUILT FLOORS IN THE CITY



- > 16,329 RSF Floors
- > Elegant pre-built spaces
- > Glass and millwork details and high-end finishes
- > Tenant controlled HVAC
- > Biometric security systems and much more...



NEW YORK'S MOST PRESTIGIOUS ADDRESS



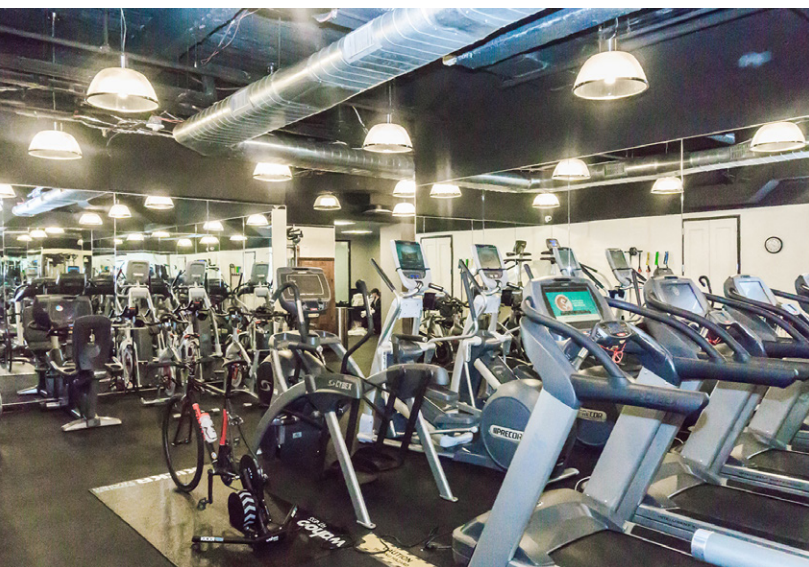
- Floor to ceiling picture windows
- Electronically controlled window shades
- Pantries with Miele appliances



ALL INCLUSIVE TENANT AMENITIES



- > NEWLY COMPLETED CONFERENCE CENTER
- > TRAINER STAFFED FITNESS CENTER AVAILABLE TO ALL EMPLOYEES
- > STATE OF THE ART GOLF SIMULATOR



**ENTIRE 4TH AND
5TH FLOORS
CAN BE LEASED
INDIVIDUALLY OR
COMBINED
FOR A TOTAL OF
32,592 RSF OF
CONTIGUOUS SPACE**

**POSSESSION: IMMEDIATE
LANDLORD WILL MODIFY
EXISTING INSTALLATIONS
TO SUIT TENANTS NEEDS**

For more information, please contact:

MARK S. WEISS
212 841 7871
mark.weiss@cushwake.com

ALAN WILDES
212 841 5925
alan.Wildes@cushwake.com

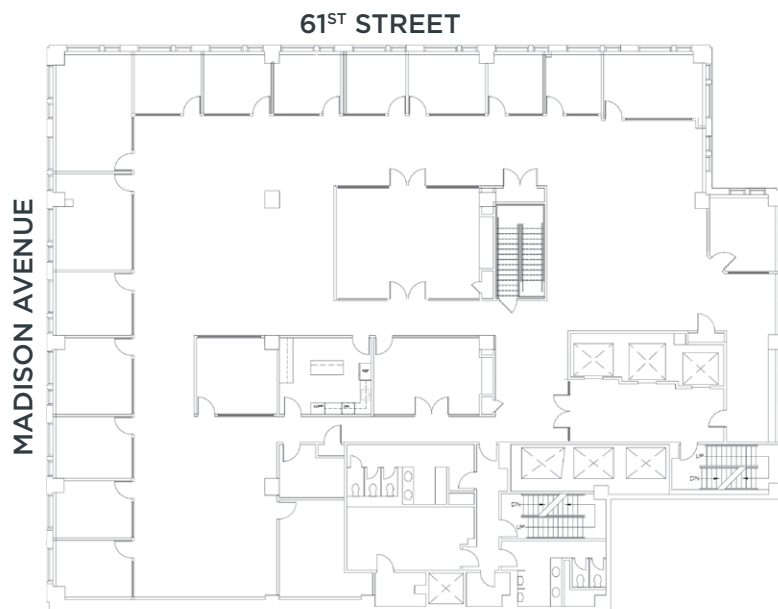
JONATHAN SCHINDLER
212 318 9715
jonathan.schindler@cushwake.com

REMY LIEBERSOHN
212 841 7638
remy.liebersohn@cushwake.com

SAMIA BALI
Hartz Capital
212 336 3336



ENTIRE 5TH FLOOR 16,329 RSF



ENTIRE 4TH FLOOR 16,263 RSF

