

Available Medical Office Space for Lease

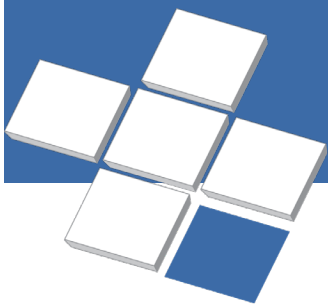
# Holy Family Central MOB

212 East Central Avenue, Spokane, WA



For Leasing Information:  
Lynn Lantgen  
Senior Director of Leasing  
Phone: 858-794-1900  
llantgen@pmbres.com  
www.pmbres.com  
CA Lic. 00981851

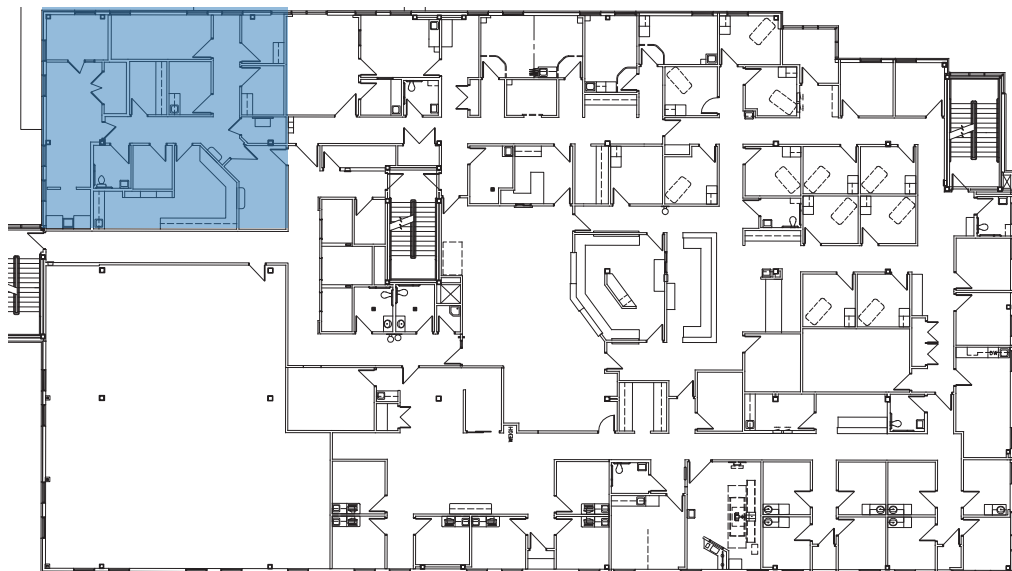
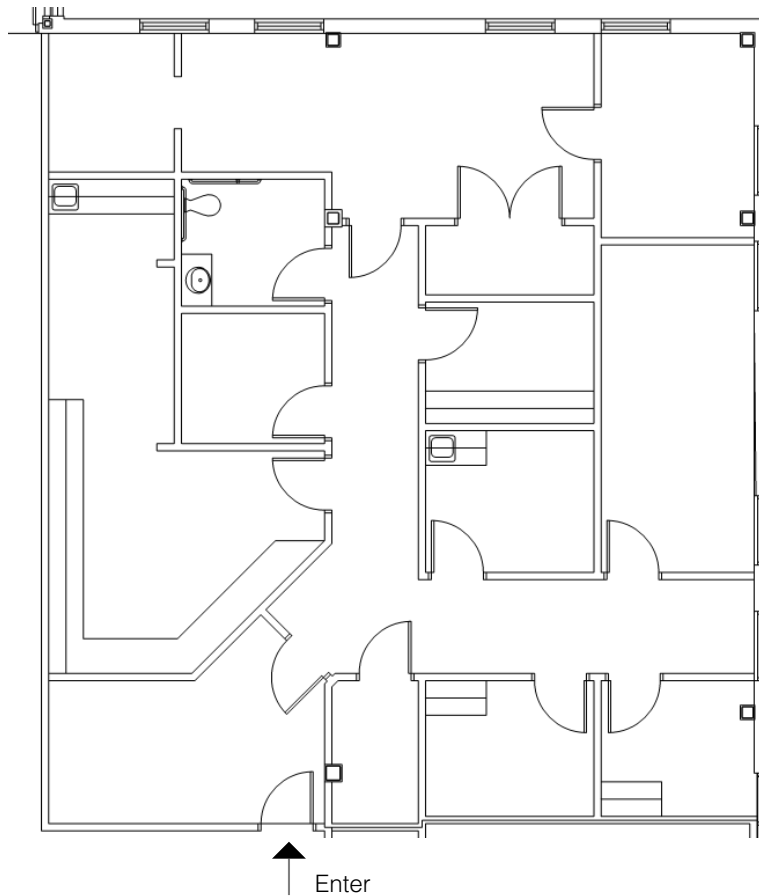
- 60,000 SF Medical Office Building with direct connection to the hospital
- Expanded patient and staff parking (free surface parking)
- Renovated hospital entries, lobby, corridors, and wayfinding system
- Centralized/expanded imaging center
- Expanded operating suites with the addition of four state-of-the-art ORs
- Expanded pre-op holding and post-surgical recovery
- Relocate/expanded PACU



**PMB**  
Real Estate Services  
*Real Estate Management Solutions for Healthcare*



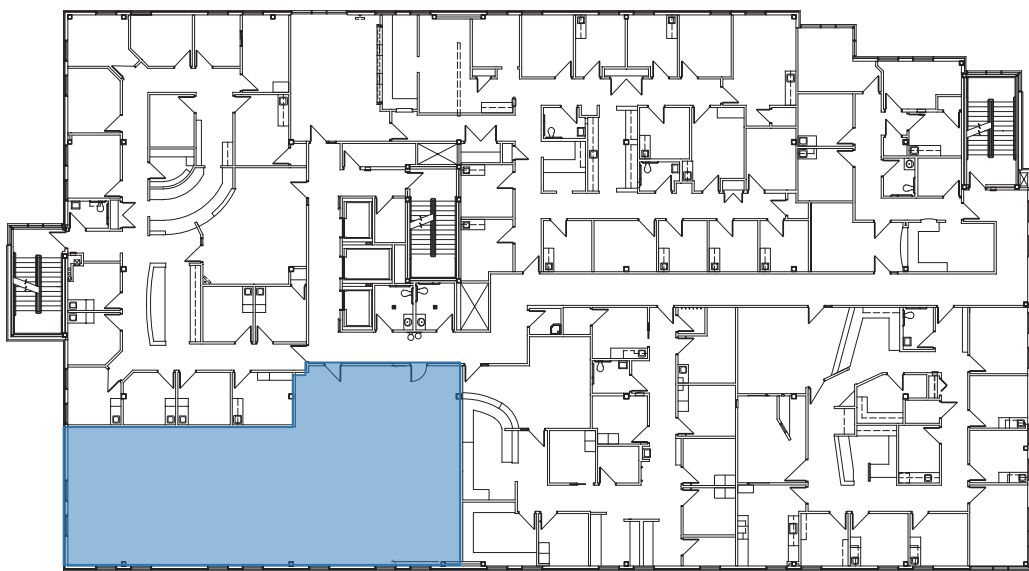
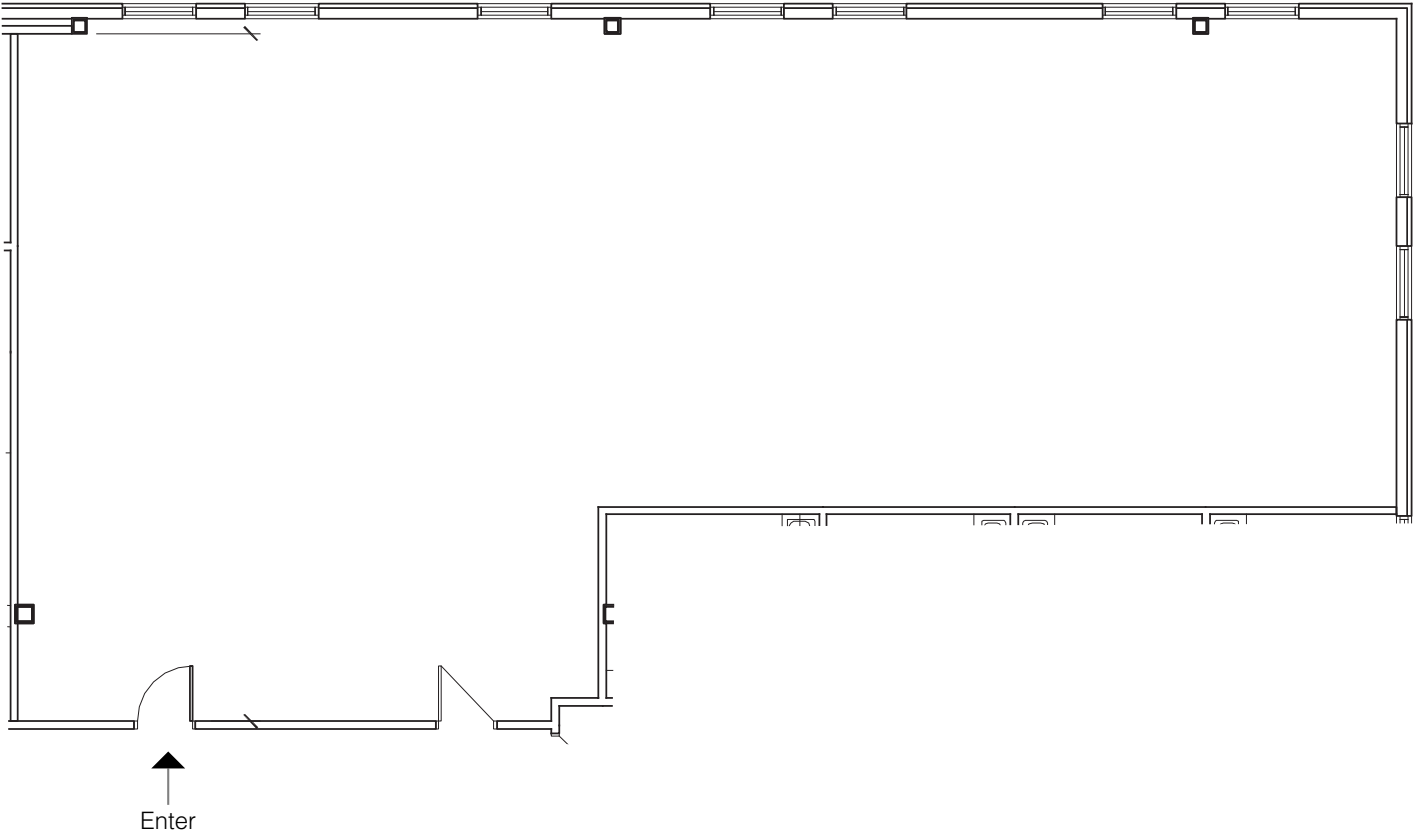
# Suite 215 - 2,058 SF



For Leasing Information:  
Lynn Lantgen | Senior Director of Leasing  
Phone: 858-794-1900 | [llantgen@pmbres.com](mailto:llantgen@pmbres.com)  
[www.pmbres.com](http://www.pmbres.com) | CA Lic. 00981851



# Suite 325 - 2,629



For Leasing Information:  
Lynn Lantgen | Senior Director of Leasing  
Phone: 858-794-1900 | [llantgen@pmbres.com](mailto:llantgen@pmbres.com)  
[www.pmbres.com](http://www.pmbres.com) | CA Lic. 00981851

