

2021 BURLINGTON ST

KANSAS CITY, MO 64116



REECE

COMMERCIAL REAL ESTATE

a Berkshire Hathaway Affiliate



HIGHLIGHTS

- 5,450 SF Large Shop on Burlington St
- 5 Oversized Garage Doors
- Overhead Heat
- Metal Roof
- Includes Parking Lot
- Zoned C-3 General Business
- Certified Opportunity Zone

FOR SALE

\$750,000

DEMOGRAPHICS

	1 Mile	3 Mile	5 Mile
2019 POPULATION	4,053	45,196	186,176
2019 AVG HOUSEHOLD INCOME	\$53,750	\$63,719	\$56,469

Connor Sweeney

Office: 913-945-3730

Mobile: 816-217-7352

Email: csweeney@reececommercial.com

The information above has been obtained from sources believed reliable. While we do not doubt its accuracy we have not verified it and make no guarantee, warranty or representation about it. It is your responsibility to independently confirm its accuracy and completeness. Any projections, opinions, assumptions, or estimates used are for example only and do not represent the current or future performance of the property. You and your advisors should conduct a careful, independent investigation of the property to determine to your satisfaction the suitability of the property for your needs.

© 2019

PHOTOS

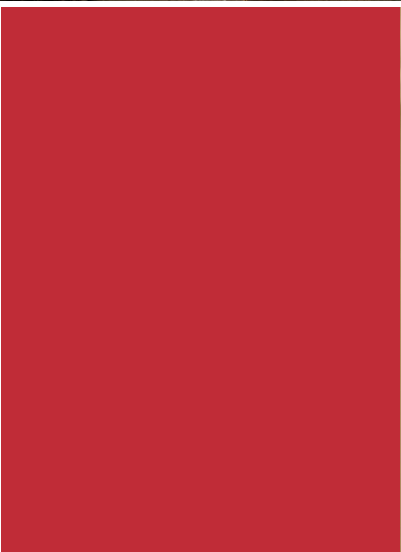
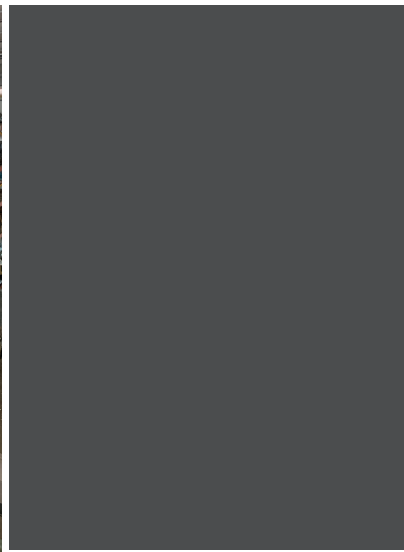
2021 BURLINGTON ST, KANSAS CITY, MO 64116



REECE

COMMERCIAL REAL ESTATE

a Berkshire Hathaway Affiliate



Connor Sweeney

Office: 913-945-3730

Mobile: 816-217-7352

Email: csweeney@reececommercial.com

The information above has been obtained from sources believed reliable. While we do not doubt its accuracy we have not verified it and make no guarantee, warranty or representation about it. It is your responsibility to independently confirm its accuracy and completeness. Any projections, opinions, assumptions, or estimates used are for example only and do not represent the current or future performance of the property. You and your advisors should conduct a careful, independent investigation of the property to determine to your satisfaction the suitability of the property for your needs.

© 2019

AERIALS

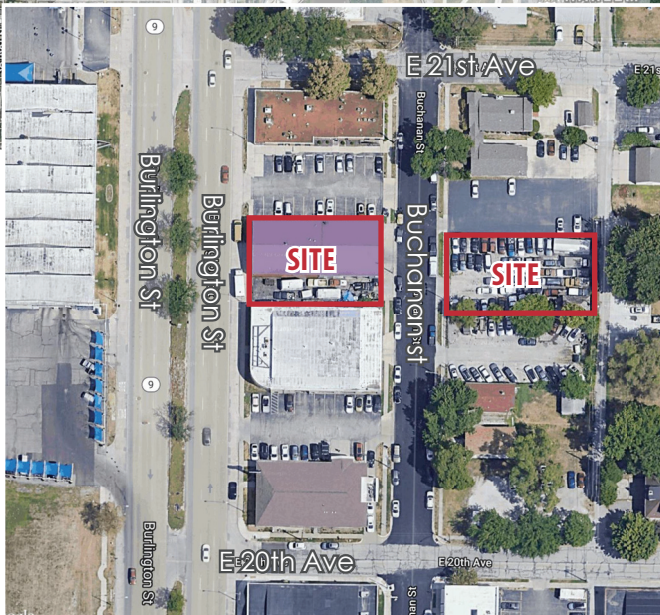
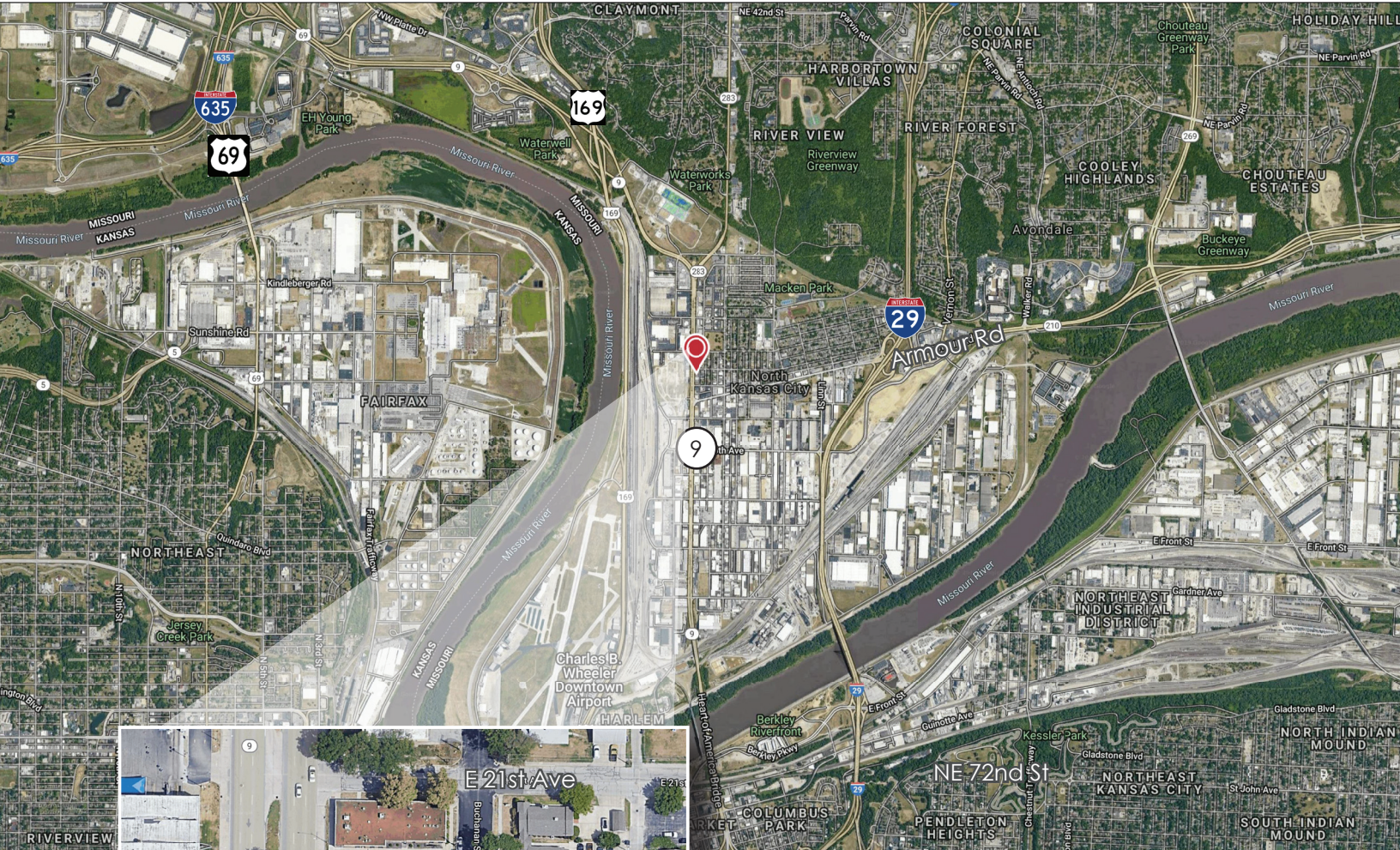
2021 BURLINGTON ST, KANSAS CITY, MO 64116



REECE

COMMERCIAL REAL ESTATE

a Berkshire Hathaway Affiliate



Connor Sweeney

Office: 913-945-3730

Mobile: 816-217-7352

Email: csweeney@reececommercial.com

The information above has been obtained from sources believed reliable. While we do not doubt its accuracy we have not verified it and make no guarantee, warranty or representation about it. It is your responsibility to independently confirm its accuracy and completeness. Any projections, opinions, assumptions, or estimates used are for example only and do not represent the current or future performance of the property. You and your advisors should conduct a careful, independent investigation of the property to determine to your satisfaction the suitability of the property for your needs.

© 2019