

108 South Side Square - HUNTSVILLE, AL

OPPORTUNITY IN DOWNTOWN HUNTSVILLE - FOR LEASE
RETAIL & OFFICE SPACE AVAILABLE



PROPERTY HIGHLIGHTS

- Surrounded by numerous business professionals, daily shoppers, dining, hotels, attractions, convention center, museums, and annual events—all within convenient walking distance.
- Easy access to and from Interstate 565 and Memorial Parkway.
- Approximate depth for overall building is 140'-141'; the approximate width is 18'6".
- Close to several city parking decks.
- Property suits a number of users including restaurants, retail, and office.
- In area with more than 1,000 nearby hotel rooms and vibrant tourism.
- Historic building that offers modern charm and amenities.

ABOUT THE PROPERTY

108 South Side Square is located on the historic square in Downtown Huntsville. The site is a beautiful destination for restaurant, retail, and office tenants to join the heart of the city and Huntsville's main district for business, luxury living, dining, retail, and entertainment. Located on a walkable, tree-lined street, this site offers ideal visibility and access.

LOCATION

108 South Side Square
Huntsville, AL 35801
34.729689, -86.585024

AVAILABLE - FLOORS CAN BE LEASED SEPARATELY

Basement - 2,492 SF
First Floor - 2,463 SF
Second Floor - 2,585 SF

PRICE

Please Call For Pricing Information

FOR MORE INFORMATION CALL:

RETAIL LEASING
Anusha Alapati Davis
256-384-7608

OFFICE LEASING
Eric St. John, CCIM
256-384-7603



CRUNKLETON
COMMERCIAL REAL ESTATE GROUP

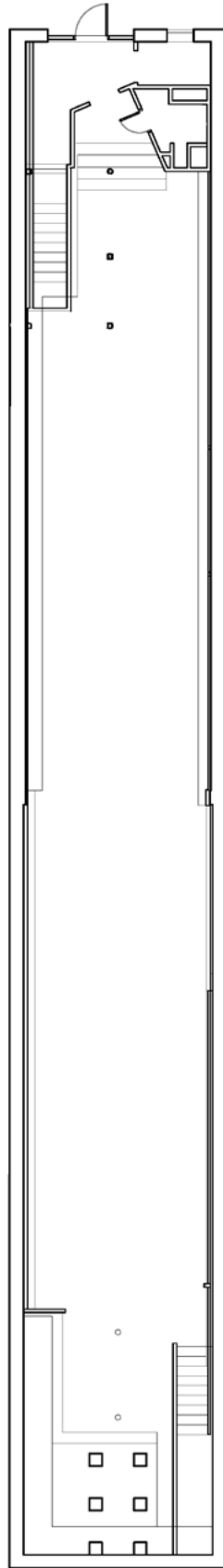
PROPERTY AREA MAP



Downtown Huntsville is the city's epicenter for business, luxury living, dining, retail, entertainment, and nightlife. Home to more than 1.4K businesses, this neighborhood is a hub for gatherings, city attractions, and annual events.

BASEMENT - 2,492 SF

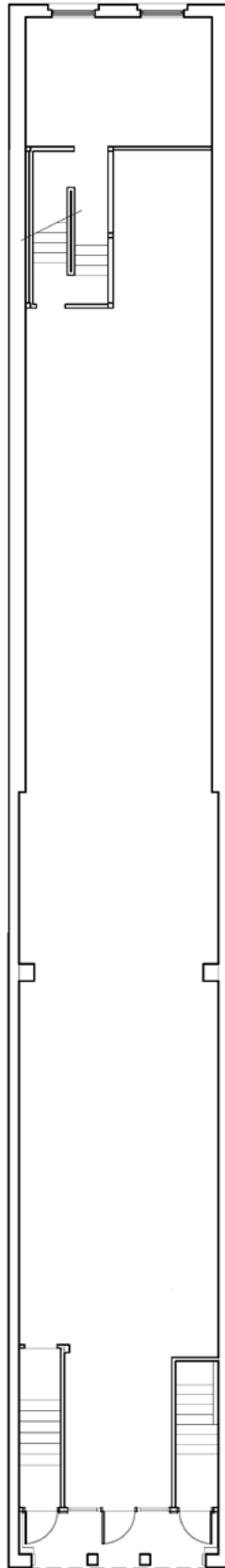
BACK



FRONT

FIRST FLOOR - 2,463 SF

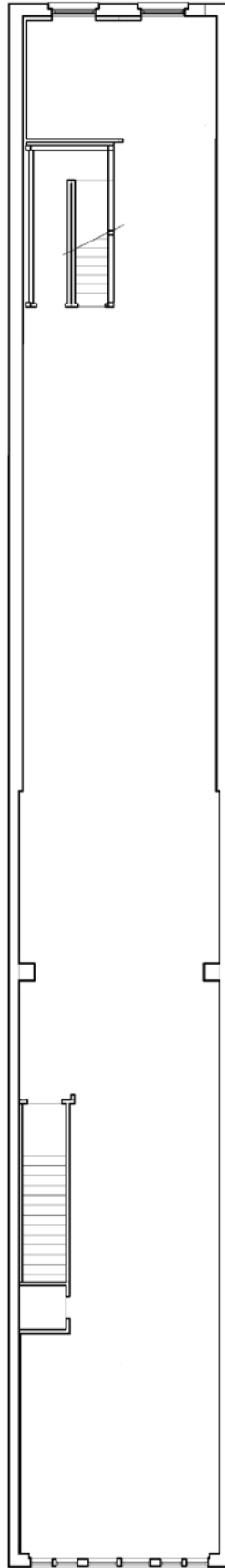
BACK



FRONT

SECOND FLOOR - 2,585 SF

BACK



FRONT