



CHESTER INDUSTRIAL PARK

24 Elizabeth Drive

Chester (Orange County), NY



OFFICE SUITES FOR LEASE



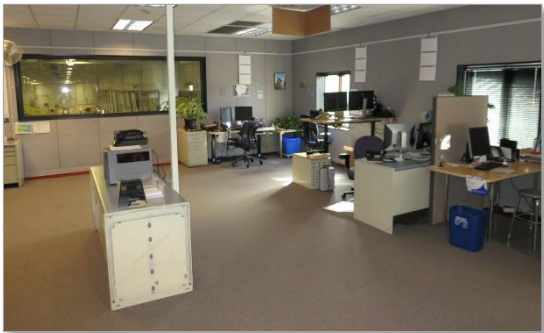
2 OFFICE SUITES FOR LEASE

Total ±8,655 Sq. Ft. Available

PROPERTY DESCRIPTION:

Two very clean office suites available for lease within an attractive office and industrial building in Chester Industrial Park.

- 3,720 sq. ft. available on ground floor
- 4,935 sq. ft. available on second floor
- Mostly open floor plans
- Well suited for engineering or similar professional office user
- **LOCATION:** 4 minute drive to NY Route 17, Exit 126 (Chester), 30 minutes to Mahwah, NJ, 45 minutes to Tappan Zee Bridge.
- **PARKING:** 30 spaces



LEASE RATE: \$12/SF GROSS

For more information, please contact:

Robert W. Scherreik, CCIM, SIOR, MCR
Executive Managing Director
Real Estate Broker
 +1 845 787 1373
rscherreik@pyramidbrokerage.com

PYRAMID BROKERAGE COMPANY
 356 Meadow Avenue, 2nd Floor
 Newburgh, NY 12550
pyramidbrokerage.com



CHESTER INDUSTRIAL PARK

24 Elizabeth Drive

Chester (Orange County), NY



REGIONAL MAP

For more information, please contact:

Robert W. Scherreik, CCIM, SIOR, MCR
Executive Managing Director
Real Estate Broker
 +1 845 787 1373
rscherreik@pyramidbrokerage.com

PYRAMID BROKERAGE COMPANY
 356 Meadow Avenue, 2nd Floor
 Newburgh, NY 12550
pyramidbrokerage.com

Independently Owned and Operated / A Member of the Cushman & Wakefield Alliance
 Cushman & Wakefield Copyright 2015. No warranty or representation, express or implied, is made to the accuracy or completeness of the information contained herein, and same is submitted subject to errors, omissions, change of price, rental or other conditions, withdrawal without notice, and to any special listing conditions imposed by the property owner(s). As applicable, we make no representation as to the condition of the property (or properties) in question.