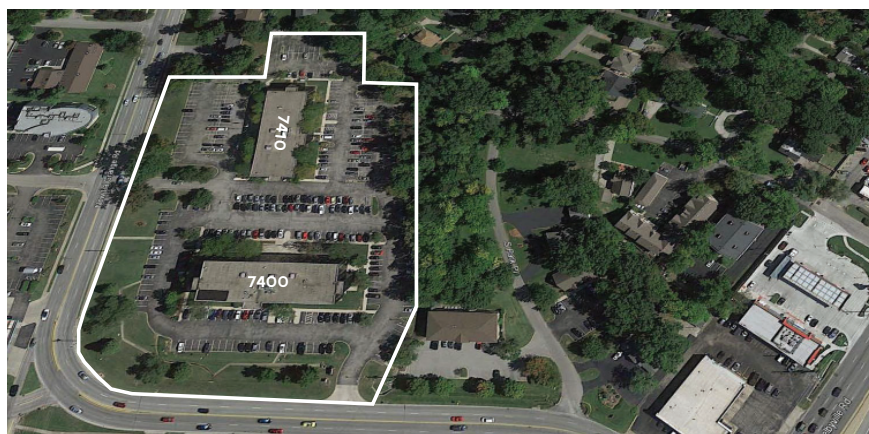


For Lease

Norwood Office Park
7400 & 7410 New LaGrange Road
Louisville, Kentucky 40222

Office suites available



Property Highlights

- Excellent east end location with easy access to the Watterson Expressway
- Within minutes to Interstate-71 and Interstate-64
- Competitive rental rates
- Abundant parking
- In close proximity to area amenities including retail, dining and consumer services
- Located less than 10 miles from Louisville's Central Business District

For more information contact:

Douglas H. Owen, SIOR
+1 502 394 2516
doug.owen@am.jll.com

Patrick J. Richardson, CCIM
+1 502 394 2515
pat.richardson@am.jll.com

jll.com/louisville

For Lease



7400 New LaGrange Road

- Four-story office building with suites ranging from 910 - 1,214 s.f.
- Ample natural light throughout the entire building
- **Suite 303:** 1,214 s.f.
 - Two restrooms in space
 - Kitchen with sink
 - Open room with two private offices
- **Suite 305:** 910 s.f.
 - Built-in cubicles
 - Water available in space



7410 New LaGrange Road

- Three-story office building with first floor suite available
- Ample natural light throughout the entire building
- **Suite 125:** 795 s.f.
 - Corner suite with reception glass window
 - Small consultation rooms

For more information, contact:

Douglas H. Owen, SIOR
+1 502 394 2516
doug.owen@am.jll.com

Patrick J. Richardson, CCIM
+1 502 394 2515
pat.richardson@am.jll.com

DISCLAIMER

©2019 Jones Lang LaSalle IP, Inc. All rights reserved. All information contained herein is from sources deemed reliable; however, no representation or warranty is made to the accuracy thereof.