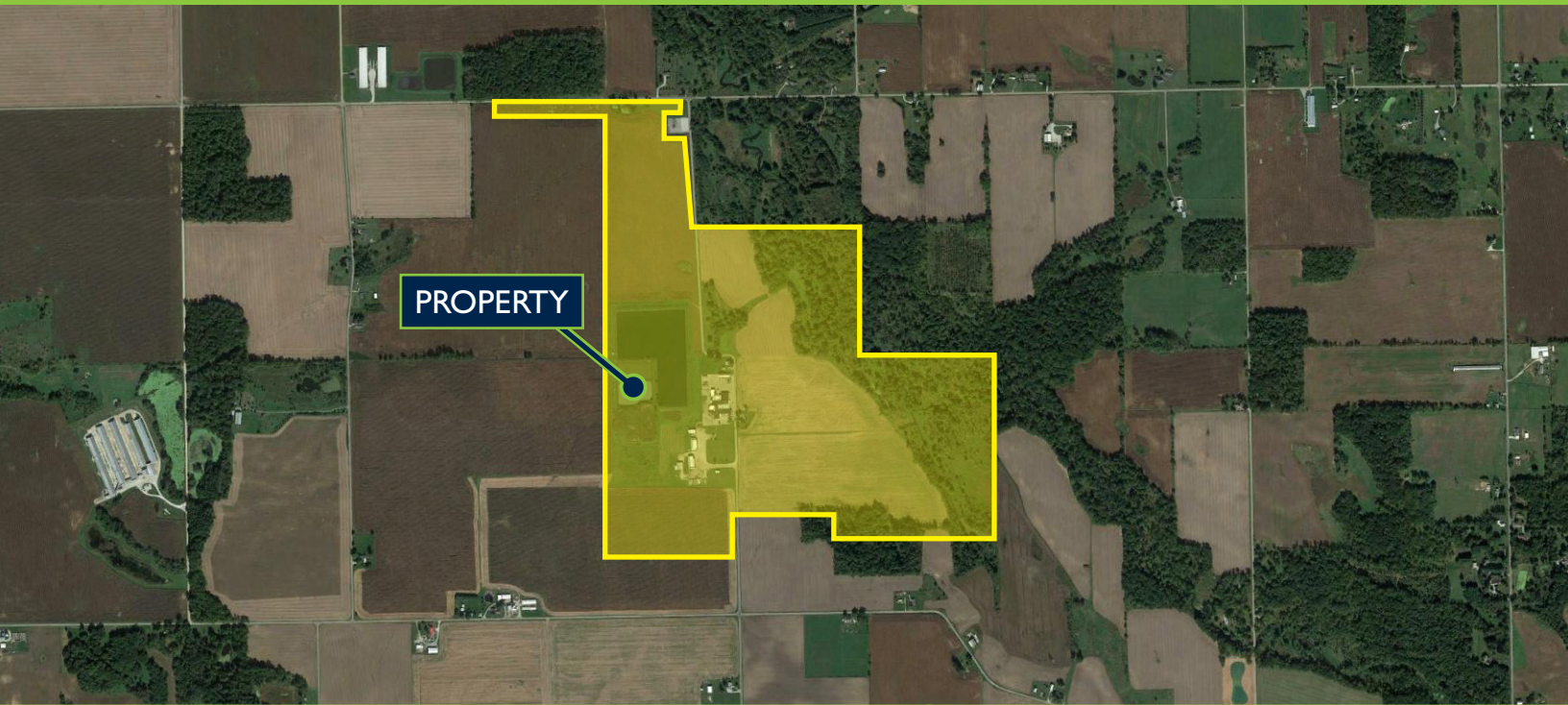


POULTRY PLANT/AGRICULTURAL LAND

2601 S. TINKEY RD., MENTONE, IN

FOR SALE



FEATURES:

- Former poultry processing site available
 - 47,318 SF main processing plant
 - 1,456 SF office building
 - 5 additional out-buildings ranging from 2,400 – 6,050 SF
- 275 acre estate
 - 144 acres currently leased as farmland
 - 71 acres of woods and creek
 - Remaining 60 acres made up of buildings and retention ponds
- Production capacity: 60,000+ birds per day
- Cooler capacity: 75,000 lbs
- Complete irrigation system
- All licenses and permits are active up to January 2020
 - USDA and IDEM wastewater and drinking water permits transferrable to new owner
- Some trailers, tractors, forklifts, pallet jacks, and other assorted equipment to be included
- Property taxes: \$21,155 (payable 2018)
- **FOR SALE: \$1,800,000**



FOR MORE INFORMATION:

Gary Salyer
Senior Broker
574.267.2322
gsalyer@bradleyco.com

Kirk Zuber
Senior Broker
574.267.8556
kzuber@bradleyco.com

Alex Reed
Broker
574.306.0790
areed@bradleyco.com

©2018 Bradley Company, LLC and affiliates. Use of any third party name or mark is for informational purposes only and does not indicate sponsorship or endorsement by such party. Any property information presented above has been obtained from sources believed reliable. Not all information has been independently verified, and Bradley Company, LLC makes no guarantee, warranty or representation about its accuracy. Any projections, opinions, or estimates are for example only and do not necessarily represent the future performance of a property. Before completing a real estate transaction, you and your advisors should conduct an independent investigation of the property to determine its suitability for your needs.



POULTRY PLANT/AGRICULTURAL LAND

MENTONE, INDIANA



FOR MORE INFORMATION:

Gary Salyer
Senior Broker
574.267.2322
gsalyer@bradleyco.com

Kirk Zuber
Senior Broker
574.267.8556
kzuber@bradleyco.com

Alex Reed
Broker
574.306.0790
areed@bradleyco.com

©2018 Bradley Company, LLC and affiliates. Use of any third party name or mark is for informational purposes only and does not indicate sponsorship or endorsement by such party. Any property information presented above has been obtained from sources believed reliable. Not all information has been independently verified, and Bradley Company, LLC makes no guarantee, warranty or representation about its accuracy. Any projections, opinions, or estimates are for example only and do not necessarily represent the future performance of a property. Before completing a real estate transaction, you and your advisors should conduct an independent investigation of the property to determine its suitability for your needs.



POULTRY PLANT/AGRICULTURAL LAND

2601 S. TINKEY RD., MENTONE, IN

FOR SALE



FOR MORE INFORMATION:

Gary Salyer
Senior Broker
574.267.2322
gsalyer@bradleyco.com

Kirk Zuber
Senior Broker
574.267.8556
kzuber@bradleyco.com

Alex Reed
Broker
574.306.0790
areed@bradleyco.com

©2018 Bradley Company, LLC and affiliates. Use of any third party name or mark is for informational purposes only and does not indicate sponsorship or endorsement by such party. Any property information presented above has been obtained from sources believed reliable. Not all information has been independently verified, and Bradley Company, LLC makes no guarantee, warranty or representation about its accuracy. Any projections, opinions, or estimates are for example only and do not necessarily represent the future performance of a property. Before completing a real estate transaction, you and your advisors should conduct an independent investigation of the property to determine its suitability for your needs.



POULTRY PLANT/AGRICULTURAL LAND

MENTONE, INDIANA



DISTANCE FROM MENTONE, IN



Chicago.....	117 Miles
Fort Wayne.....	55 Miles
Indianapolis.....	116 Miles
Plymouth.....	24 Miles
South Bend.....	48 Miles
Warsaw.....	12 Miles

FOR MORE INFORMATION:

Gary Salyer
Senior Broker
574.267.2322
gsalyer@bradleyco.com

Kirk Zuber
Senior Broker
574.267.8556
kzuber@bradleyco.com

Alex Reed
Broker
574.306.0790
areed@bradleyco.com

©2018 Bradley Company, LLC and affiliates. Use of any third party name or mark is for informational purposes only and does not indicate sponsorship or endorsement by such party. Any property information presented above has been obtained from sources believed reliable. Not all information has been independently verified, and Bradley Company, LLC makes no guarantee, warranty or representation about its accuracy. Any projections, opinions, or estimates are for example only and do not necessarily represent the future performance of a property. Before completing a real estate transaction, you and your advisors should conduct an independent investigation of the property to determine its suitability for your needs.

