

NEW TENANT LOUNGE!



# Westbrook

CORPORATE CENTER

ONE PLACE. **EVERYTHING.**



CBRE



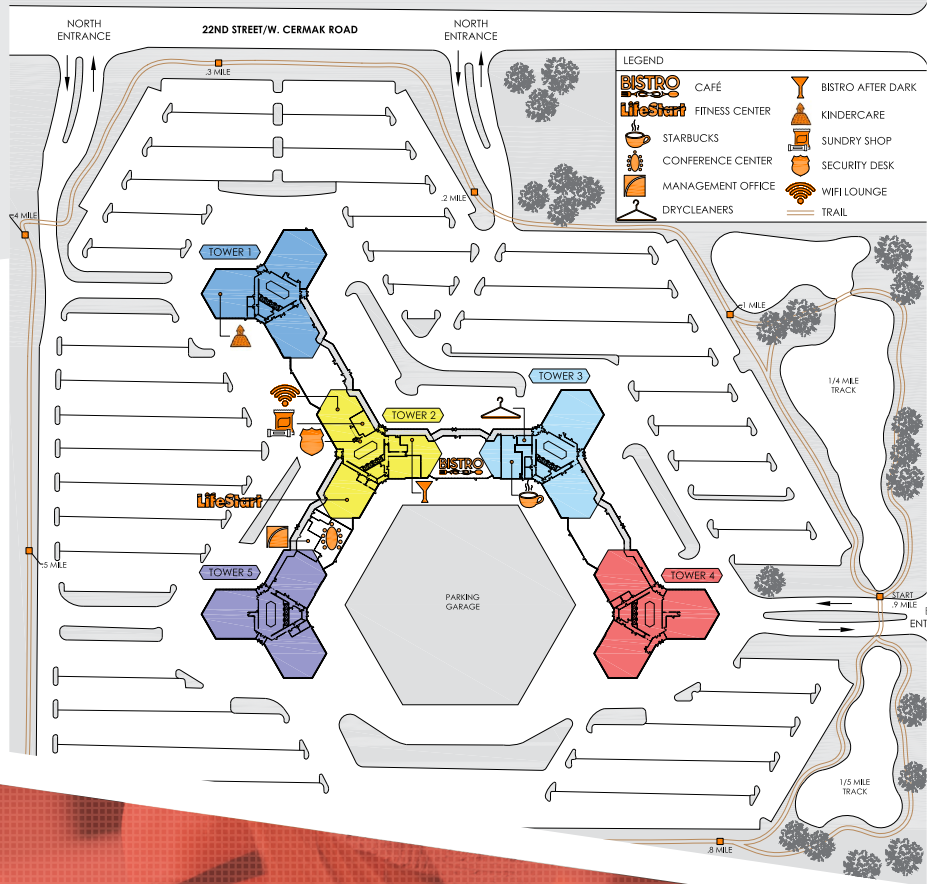
# NEW TENANT LOUNGE



Being the **largest office complex in the East-West Corridor**, comprised of 1.15 million SF, Westbrook has everything in one place.

With **unparalleled amenities, flexible space**, and **convenient commutes** you never need to leave.

## COMPLEX VIEW



WESTBROOK CORPORATE CENTER HAS  
**EVERYTHING**  
IN ONE PLACE



# UNPARALLELED AMENITIES

Westbrook is much more than office space, with state of the art amenities it is an **environment dedicated to your experience.**

## BEYOND OFFICE SPACE



The Bistro  
& Bistro After Dark



Fully-Equipped  
Fitness Center



Starbucks  
Coffee



Conference  
Facilities

## EVERYTHING YOU NEED, ON-SITE



Daycare



Security



Management



ATM



Dry  
Cleaning



Shoe  
Repair



Sundry

## OUTSTANDING AREA



Walking/Biking  
Paths



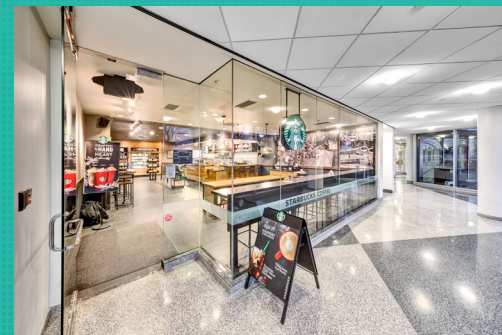
Nearby Golf Courses  
include Butler National,  
Chicago Highlands, &  
Oak Brook Golf Club



Prominent  
Signage  
Opportunities



Proximity to Oak  
Brook mall, shopping,  
dining, hotels &  
business services



# AMENITIES MAP



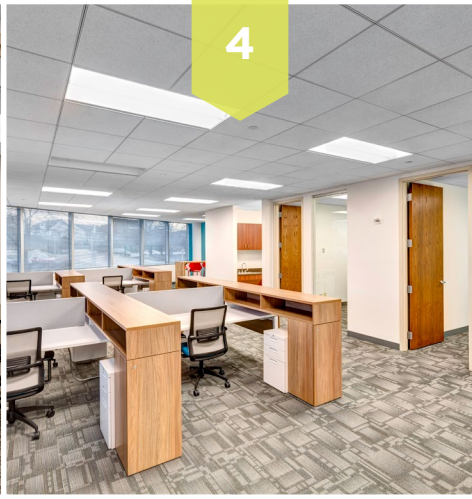
# CONVENIENT COMMUTES

Westbrook is a suburban campus with a city vibe and immediate access to accommodate all of your commuting needs.



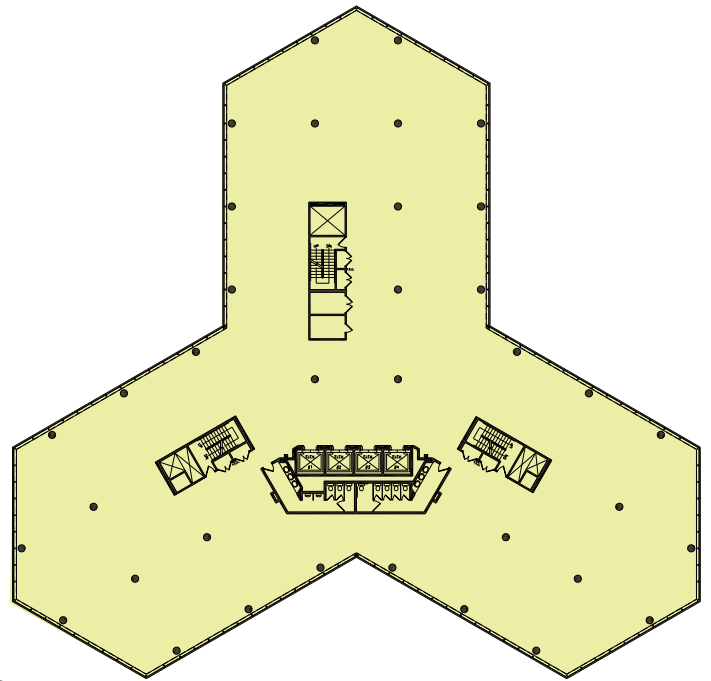
# TRANSPORTATION MAP





## TYPICAL FLOOR PLAN

Today's workplace is always on the move and **Westbrook is ahead of the curve** with spaces available between 2,000 - 40,000 SF



FLEXIBLE **SPACE**





# Westbrook

CORPORATE CENTER



## LEASING CONTACTS:

### BILL ELWOOD

Executive Vice President  
+1 630 573 7033  
william.elwood@cbre.com

### PETE ADAMO

Senior Vice President  
+1 630 573 7053  
peter.adamo@cbre.com

### TARA TORBIK

Senior Associate  
+1 630 573 7822  
tara.torbik@cbre.com



© 2019 CBRE, Inc. All rights reserved. This information has been obtained from sources believed reliable, but has not been verified for accuracy or completeness. Any projections, opinions, or estimates are subject to uncertainty. The information may not represent the current or future performance of the property. You and your advisors should conduct a careful, independent investigation of the property and verify all information. *Any reliance on this information is solely at your own risk.* CBRE and the CBRE logo are service marks of CBRE, Inc. and/or its affiliated or related companies in the United States and other countries. All other marks displayed on this document are the property of their respective owners. Photos herein are the property of their respective owners and use of these images without the express written consent of the owner is prohibited. PMStudio\_August2019