

3101 BUILDING

3101 Northup Way, Bellevue, WA



FOR LEASE

3101 BUILDING

13555 SE 36th Street, Bellevue, WA

EXCLUSIVELY REPRESENTED BY

JOE LYNCH

Executive Managing Director
joe.lynch@ngkf.com
425.362.1399

DAN HARDEN

Senior Managing Director
dan.harden@ngkf.com
425.362.1393

Newmark Knight Frank
10900 NE 4th St, Suite 1430
Bellevue, WA 98004
ngkf.com

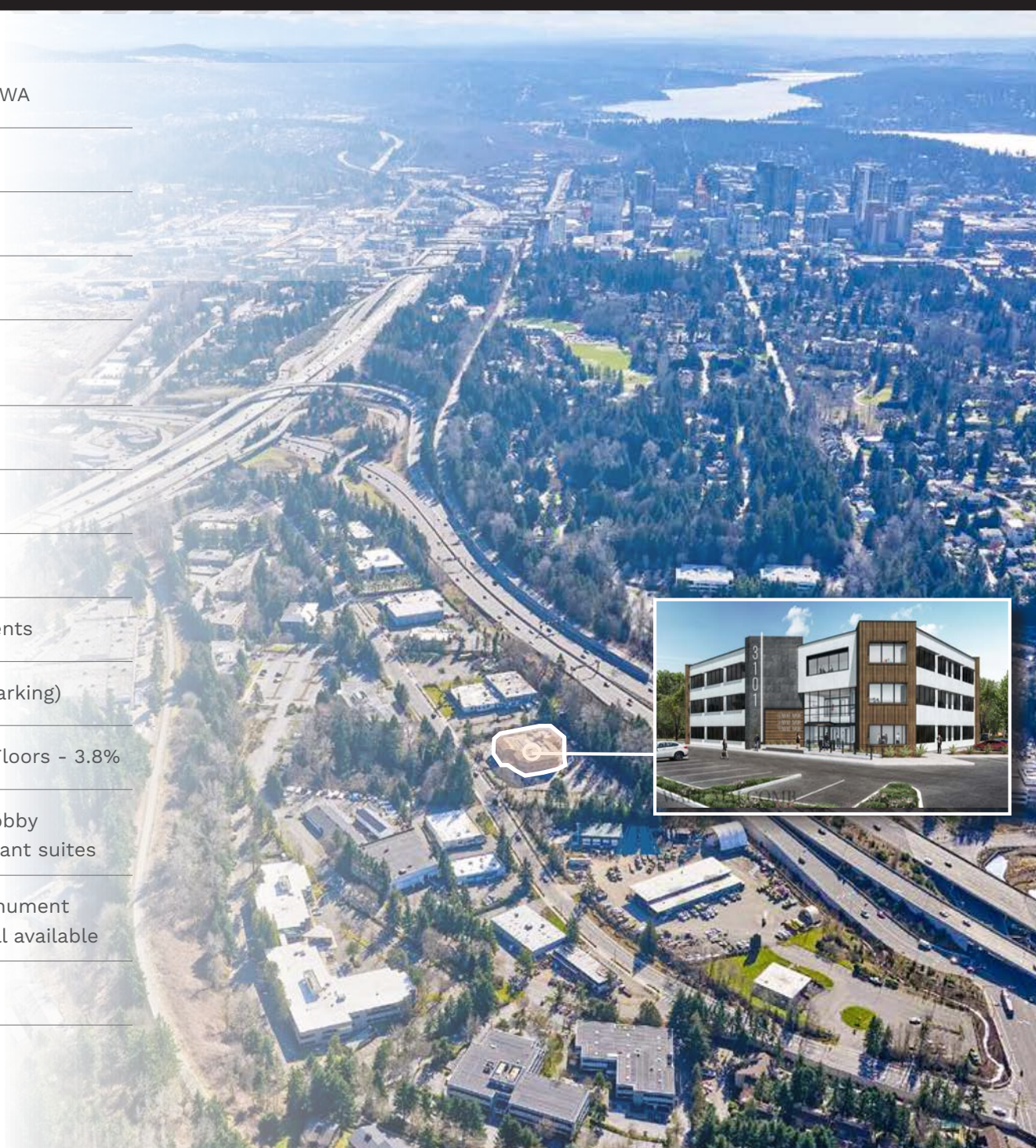
The distributor of this communication is performing acts for which a real estate license is required. The information contained herein has been obtained from sources deemed reliable but has not been verified and no guarantee, warranty or representation, either express or implied, is made with respect to such information. Terms of sale or lease and availability are subject to change or withdrawal without notice.



**Newmark
Knight Frank**

PROPERTY HIGHLIGHTS

ADDRESS	3101 Northup Way, Bellevue, WA
BUILDING SIZE	42,086 SF
LAND AREA	124,878 SF / 2.87 acres
AVAILABLE SF	5,000-42,086
EST 2019 OPERATING EXPENSES (NNN)	Approx. \$10.00/RSF/YR
TYPE	Class A
YEAR BUILT / RENOVATED	1979 / 2019
STORIES	3 Stories
AVAILABILITY	Ready for Tenant Improvements
PARKING RATIO	4.6/1,000 SF (Free surface parking)
LOAD FACTOR	1st Floor - 10% / 2nd & 3rd Floors - 3.8%
SECURITY	Card access entry at main lobby entrances and individual tenant suites
VISIBILITY	Building facade signage, monument signage and naming rights all available
ARCHITECT	Ware Malcomb



LOCAL AMENITIES



- Restaurant
- Coffee
- Bar/Lounge
- Bank
- Grocery
- Retail
- Gym/Fitness
- Gas
- Pharmacy/Clinic
- Transportation

- Future Link Light Rail
- Cross Kirkland Corridor Trail
- 520 Bike Trail

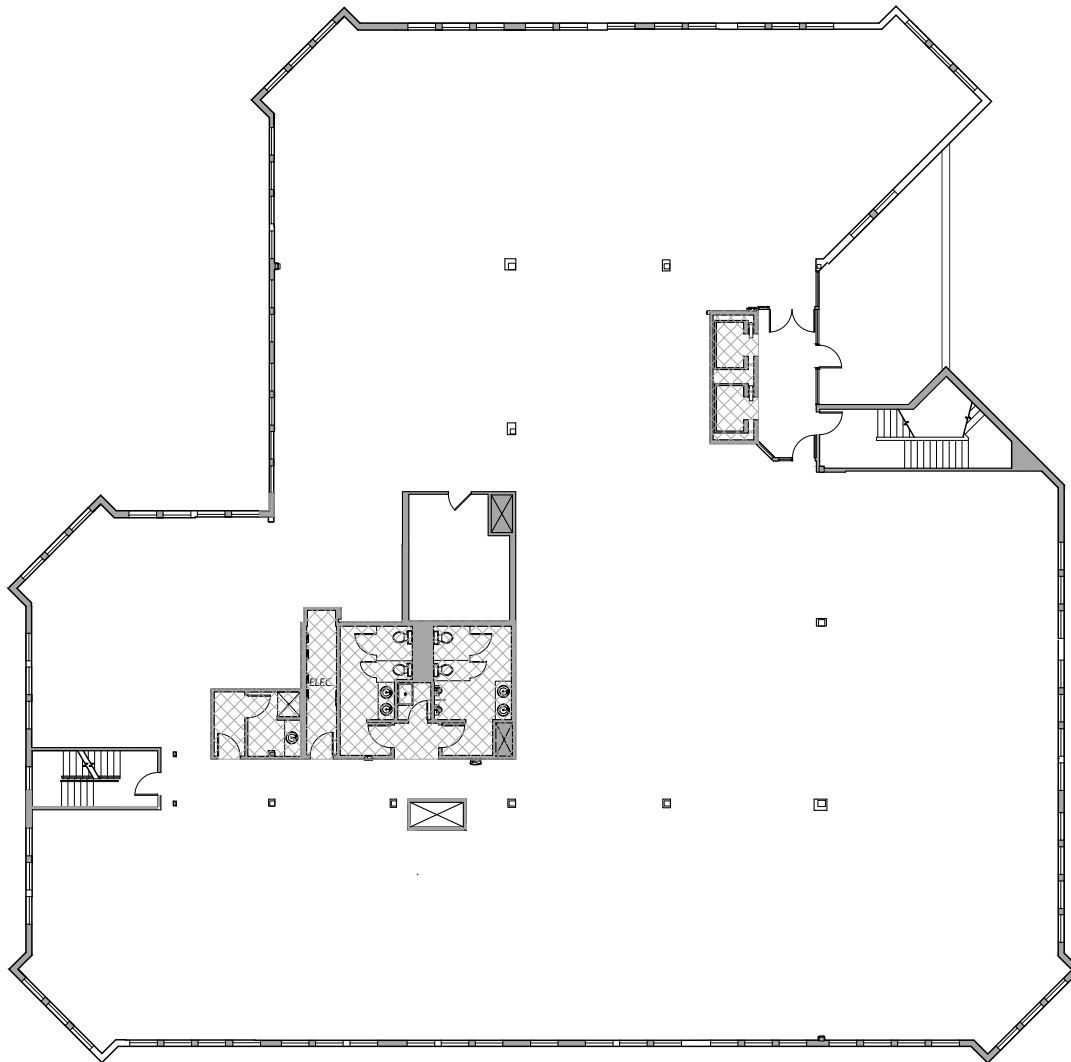
3101

FLOOR PLAN

AVAILABLE NOW

FULL BUILDING AVAILABLE

42,086 SF



REPRESENTATIVE FLOOR PLAN

13,868 SF



CONSTRUCTION PHOTOS

