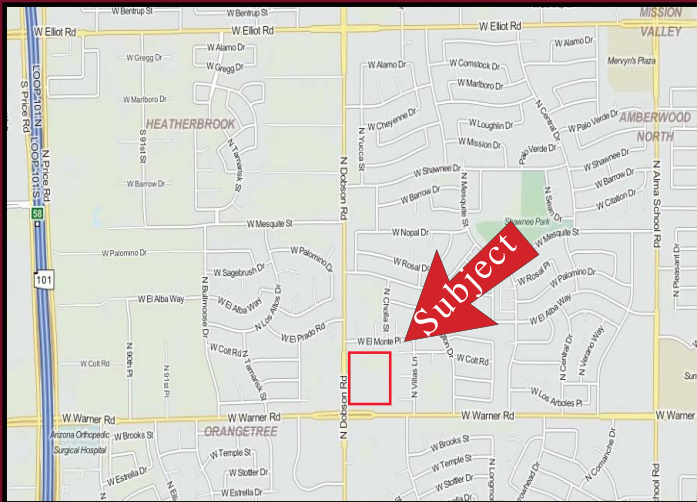


# DOBSON PARK PLAZA

NORTHEAST CORNER OF DOBSON ROAD & WARNER ROAD, CHANDLER, AZ



## AVAILABILITY

- 10,000 SF BUILD TO SUIT PAD AVAILABLE

## FEATURES

- Grocery anchored center
- Located within one mile from Loop 101
- Population within a three mile radius is over 130,000.

## TRAFFIC COUNTS

- Dobson Road-25,900 cars per day
- Warner Road- 40,600 cars per day

## NOTABLE TENANTS AT THE INTERSECTION



2017 Demographics	1 MILE	3 MILE	5 MILE
Estimated Population	15,151	133,537	355,961
Avg. Household Income	\$79,535	\$83,763	\$83,341
Daytime Employment	2,779	55,864	164,772



EXCLUSIVELY REPRESENTED BY

WWW.STRATEGICRETAILGROUP.COM

JAMES DECREMER  
602.778.3840  
jamesd@srgaz.com

ERIN SCHRAUTH  
602.792.5201  
erins@srgaz.com

15169 N. Scottsdale Road Suite 330 Scottsdale, AZ 85254 602.778.3838(p) 602.778.3839(f)



# DOBSON PARK PLAZA

NORTHEAST CORNER OF DOBSON ROAD & WARNER ROAD, CHANDLER, AZ



#	TENANT	SQ. FT.
1	Vape Central	
2	Magic Noodle House	
3	Chiropractor	
4	Florist	
5	Tae Kwon Do	
9	Bambu Dessert Drink	
10	Dog Grooming	
11	Family Medicine	
12	Golden Salon	
13	Water & Ice	
Pad	Available	10,000 sf

EXCLUSIVELY REPRESENTED BY

WWW.STRATEGICRETAILGROUP.COM



**STRATEGIC**

JAMES DECREMER  
602.778.3840  
jamesd@srgaz.com

ERIN SCHRAUTH  
602.792.5201  
erins@srgaz.com

15169 N. Scottsdale Road Suite 330 Scottsdale, AZ 85254 602.778.3838(p) 602.778.3839(f)

# EXPANDED PROFILE

2000-2010 Census, 2017 Estimates with 2022 Projections

Calculated using Weighted Block Centroid from Block Groups

Lat/Lon: 33.3352/-111.8765

RF5

## N Dobson Rd & West Warner Road

Chandler, AZ 85224

1 mi radius

3 mi radius

5 mi radius

### Population

Estimated Population (2017)	15,151		133,537		355,961	
Projected Population (2022)	16,411		145,024		387,270	
Census Population (2010)	14,563		127,228		329,410	
Census Population (2000)	15,429		130,417		327,602	
Projected Annual Growth (2017 to 2022)	1,260	1.7%	11,487	1.7%	31,309	1.8%
Historical Annual Growth (2010 to 2017)	588	0.6%	6,309	0.7%	26,551	1.2%
Historical Annual Growth (2000 to 2010)	-866	-0.6%	-3,189	-0.2%	1,808	0.1%
Estimated Population Density (2017)	4,824 psm		4,724 psm		4,534 psm	
Trade Area Size	3.14 sq mi		28.27 sq mi		78.51 sq mi	

### Households

Estimated Households (2017)	6,170		53,276		139,112	
Projected Households (2022)	6,477		56,013		146,574	
Census Households (2010)	5,852		50,090		127,395	
Census Households (2000)	5,540		46,907		119,470	
Estimated Households with Children (2017)	1,778	28.8%	16,424	30.8%	44,381	31.9%
Estimated Average Household Size (2017)	2.44		2.50		2.55	

### Average Household Income

Estimated Average Household Income (2017)	\$79,535		\$83,763		\$83,341	
Projected Average Household Income (2022)	\$95,090		\$102,472		\$101,647	
Estimated Average Family Income (2017)	\$90,919		\$97,031		\$98,237	

### Median Household Income

Estimated Median Household Income (2017)	\$68,919		\$70,269		\$70,922	
Projected Median Household Income (2022)	\$81,453		\$82,537		\$83,384	
Estimated Median Family Income (2017)	\$81,618		\$83,472		\$85,555	

### Per Capita Income

Estimated Per Capita Income (2017)	\$32,422		\$33,446		\$32,605	
Projected Per Capita Income (2022)	\$37,557		\$39,604		\$38,504	
Estimated Per Capita Income 5 Year Growth	\$5,136	15.8%	\$6,158	18.4%	\$5,899	18.1%
Estimated Average Household Net Worth (2017)	\$735,972		\$813,090		\$840,970	

### Daytime Demos (2017)

Total Businesses	426		5,762		15,903	
Total Employees	2,779		55,864		164,772	
Company Headquarter Businesses	1	0.2%	22	0.4%	83	0.5%
Company Headquarter Employees	8	0.3%	3,660	6.6%	10,570	6.4%
Employee Population per Business	6.5		9.7		10.4	
Residential Population per Business	35.6		23.2		22.4	

This report was produced using data from private and government sources deemed to be reliable. The information herein is provided without representation or warranty.

# EXPANDED PROFILE

2000-2010 Census, 2017 Estimates with 2022 Projections

Calculated using Weighted Block Centroid from Block Groups

Lat/Lon: 33.3352/-111.8765

RF5

## N Dobson Rd & West Warner Road

Chandler, AZ 85224

### Race & Ethnicity

	1 mi radius		3 mi radius		5 mi radius	
White (2017)	11,819	78.0%	96,212	72.0%	249,651	70.1%
Black or African American (2017)	673	4.4%	7,435	5.6%	21,483	6.0%
American Indian or Alaska Native (2017)	233	1.5%	2,338	1.8%	7,073	2.0%
Asian (2017)	845	5.6%	8,489	6.4%	24,514	6.9%
Hawaiian or Pacific Islander (2017)	24	0.2%	350	0.3%	1,014	0.3%
Other Race (2017)	944	6.2%	13,092	9.8%	36,836	10.3%
Two or More Races (2017)	613	4.0%	5,622	4.2%	15,390	4.3%
Not Hispanic or Latino Population (2017)	12,103	79.9%	99,912	74.8%	265,253	74.5%
Hispanic or Latino Population (2017)	3,048	20.1%	33,625	25.2%	90,708	25.5%
Not Hispanic or Latino Population (2022)	12,817	78.1%	106,160	73.2%	282,397	72.9%
Hispanic or Latino Population (2022)	3,594	21.9%	38,863	26.8%	104,872	27.1%
Not Hispanic or Latino Population (2010)	11,972	82.2%	97,451	76.6%	250,895	76.2%
Hispanic or Latino Population (2010)	2,591	17.8%	29,777	23.4%	78,514	23.8%
Not Hispanic or Latino Population (2000)	13,362	86.6%	107,190	82.2%	265,536	81.1%
Hispanic or Latino Population (2000)	2,067	13.4%	23,227	17.8%	62,066	18.9%
Projected Hispanic Annual Growth (2017 to 2022)	546	3.6%	5,239	3.1%	14,165	3.1%
Historic Hispanic Annual Growth (2000 to 2017)	981	2.8%	10,397	2.6%	28,642	2.7%

### Age Distribution (2017)

Age Under 5	831	5.5%	8,076	6.0%	22,347	6.3%
Age 5 to 9 Years	843	5.6%	8,086	6.1%	22,615	6.4%
Age 10 to 14 Years	890	5.9%	8,469	6.3%	23,616	6.6%
Age 15 to 19 Years	1,026	6.8%	8,871	6.6%	24,177	6.8%
Age 20 to 24 Years	976	6.4%	9,855	7.4%	27,277	7.7%
Age 25 to 29 Years	1,164	7.7%	11,190	8.4%	29,025	8.2%
Age 30 to 34 Years	1,230	8.1%	10,159	7.6%	26,912	7.6%
Age 35 to 39 Years	1,042	6.9%	8,837	6.6%	24,233	6.8%
Age 40 to 44 Years	1,027	6.8%	8,642	6.5%	23,872	6.7%
Age 45 to 49 Years	1,102	7.3%	9,231	6.9%	24,741	7.0%
Age 50 to 54 Years	1,249	8.2%	9,705	7.3%	24,870	7.0%
Age 55 to 59 Years	1,113	7.3%	9,241	6.9%	23,005	6.5%
Age 60 to 64 Years	868	5.7%	7,526	5.6%	18,464	5.2%
Age 65 to 74 Years	1,057	7.0%	9,358	7.0%	24,197	6.8%
Age 75 to 84 Years	492	3.2%	4,272	3.2%	11,320	3.2%
Age 85 Years or Over	241	1.6%	2,018	1.5%	5,291	1.5%
Median Age	37.2		35.9		35.2	

### Gender Age Distribution (2017)

Female Population	7,764	51.2%	67,877	50.8%	180,318	50.7%
Age 0 to 19 Years	1,760	22.7%	16,287	24.0%	45,489	25.2%
Age 20 to 64 Years	4,965	63.9%	42,770	63.0%	111,822	62.0%
Age 65 Years or Over	1,039	13.4%	8,820	13.0%	23,008	12.8%
Female Median Age	38.7		37.1		36.5	
Male Population	7,387	48.8%	65,660	49.2%	175,643	49.3%
Age 0 to 19 Years	1,830	24.8%	17,215	26.2%	47,266	26.9%
Age 20 to 64 Years	4,807	65.1%	41,617	63.4%	110,577	63.0%
Age 65 Years or Over	750	10.2%	6,827	10.4%	17,799	10.1%
Male Median Age	35.7		34.7		34.1	

This report was produced using data from private and government sources deemed to be reliable. The information herein is provided without representation or warranty.

# EXPANDED PROFILE

2000-2010 Census, 2017 Estimates with 2022 Projections

Calculated using Weighted Block Centroid from Block Groups

Lat/Lon: 33.3352/-111.8765

RF5

## N Dobson Rd & West Warner Road

Chandler, AZ 85224

1 mi radius

3 mi radius

5 mi radius

### Household Income Distribution (2017)

HH Income \$200,000 or More	220	3.6%	2,936	5.5%	8,150	5.9%
HH Income \$150,000 to \$199,999	372	6.0%	3,332	6.3%	9,352	6.7%
HH Income \$100,000 to \$149,999	1,015	16.4%	8,642	16.2%	22,872	16.4%
HH Income \$75,000 to \$99,999	1,072	17.4%	8,495	15.9%	20,537	14.8%
HH Income \$50,000 to \$74,999	1,455	23.6%	11,347	21.3%	27,492	19.8%
HH Income \$35,000 to \$49,999	785	12.7%	7,162	13.4%	18,217	13.1%
HH Income \$25,000 to \$34,999	471	7.6%	4,058	7.6%	11,255	8.1%
HH Income \$15,000 to \$24,999	341	5.5%	3,614	6.8%	10,540	7.6%
HH Income Under \$15,000	440	7.1%	3,690	6.9%	10,697	7.7%
HH Income \$35,000 or More	4,918	79.7%	41,913	78.7%	106,619	76.6%
HH Income \$75,000 or More	2,678	43.4%	23,404	43.9%	60,911	43.8%

### Housing (2017)

Total Housing Units	6,348		54,937		143,423	
Housing Units Occupied	6,170	97.2%	53,276	97.0%	139,112	97.0%
Housing Units Owner-Occupied	4,381	71.0%	32,272	60.6%	81,327	58.5%
Housing Units, Renter-Occupied	1,789	29.0%	21,004	39.4%	57,785	41.5%
Housing Units, Vacant	178	2.8%	1,661	3.0%	4,311	3.0%

### Marital Status (2017)

Never Married	4,571	36.3%	40,139	36.9%	109,680	38.2%
Currently Married	5,055	40.2%	45,661	41.9%	119,300	41.5%
Separated	391	3.1%	3,907	3.6%	10,631	3.7%
Widowed	598	4.8%	4,427	4.1%	11,484	4.0%
Divorced	1,972	15.7%	14,772	13.6%	36,289	12.6%

### Household Type (2017)

Population Family	12,017	79.3%	106,249	79.6%	284,491	79.9%
Population Non-Family	3,062	20.2%	26,860	20.1%	70,100	19.7%
Population Group Quarters	73	0.5%	429	0.3%	1,370	0.4%
Family Households	3,897	63.2%	33,439	62.8%	87,674	63.0%
Non-Family Households	2,274	36.8%	19,836	37.2%	51,438	37.0%
Married Couple with Children	1,118	22.1%	9,895	21.7%	27,211	22.8%
Average Family Household Size	3.1		3.2		3.2	

### Household Size (2017)

1 Person Households	1,651	26.8%	14,400	27.0%	37,284	26.8%
2 Person Households	2,195	35.6%	18,138	34.0%	45,163	32.5%
3 Person Households	1,045	16.9%	8,918	16.7%	23,449	16.9%
4 Person Households	759	12.3%	6,700	12.6%	18,648	13.4%
5 Person Households	343	5.6%	3,074	5.8%	8,655	6.2%
6 or More Person Households	177	2.9%	2,046	3.8%	5,913	4.3%

### Household Vehicles (2017)

Households with 0 Vehicles Available	93	1.5%	2,297	4.3%	7,037	5.1%
Households with 1 Vehicles Available	2,112	34.2%	19,198	36.0%	49,518	35.6%
Households with 2 or More Vehicles Available	3,966	64.3%	31,780	59.7%	82,557	59.3%
Total Vehicles Available	11,855		96,791		250,183	
Average Vehicles Per Household	1.9		1.8		1.8	

This report was produced using data from private and government sources deemed to be reliable. The information herein is provided without representation or warranty.



# EXPANDED PROFILE

2000-2010 Census, 2017 Estimates with 2022 Projections

Calculated using Weighted Block Centroid from Block Groups

Lat/Lon: 33.3352/-111.8765

RF5

## N Dobson Rd & West Warner Road

Chandler, AZ 85224

1 mi radius

3 mi radius

5 mi radius

### Labor Force (2017)

Estimated Labor Population Age 16 Years or Over	12,390		107,241		282,848	
Estimated Civilian Employed	8,576	69.2%	74,490	69.5%	194,847	68.9%
Estimated Civilian Unemployed	330	2.7%	2,775	2.6%	8,391	3.0%
Estimated in Armed Forces	5	-	23	-	129	-
Estimated Not in Labor Force	3,479	28.1%	29,954	27.9%	79,481	28.1%
Unemployment Rate	2.7%		2.6%		3.0%	

### Occupation (2010)

Occupation: Population Age 16 Years or Over	8,551		74,986		195,328	
Management, Business, Financial Operations	1,455	17.0%	12,362	16.5%	31,093	15.9%
Professional, Related	1,985	23.2%	18,123	24.2%	46,756	23.9%
Service	1,427	16.7%	12,780	17.0%	33,279	17.0%
Sales, Office	2,348	27.5%	20,374	27.2%	54,213	27.8%
Farming, Fishing, Forestry	8	0.1%	166	0.2%	506	0.3%
Construct, Extraction, Maintenance	682	8.0%	4,819	6.4%	12,488	6.4%
Production, Transport Material Moving	647	7.6%	6,362	8.5%	16,994	8.7%
White Collar Workers	5,787	67.7%	50,859	67.8%	132,062	67.6%
Blue Collar Workers	2,764	32.3%	24,127	32.2%	63,266	32.4%

### Consumer Expenditure (2017)

Total Household Expenditure	\$372 M		\$3.31 B		\$8.60 B	
Total Non-Retail Expenditure	\$203 M	54.5%	\$1.81 B	54.5%	\$4.69 B	54.5%
Total Retail Expenditure	\$170 M	45.5%	\$1.51 B	45.5%	\$3.91 B	45.5%
Apparel	\$13.0 M	3.5%	\$116 M	3.5%	\$302 M	3.5%
Contributions	\$15.9 M	4.3%	\$146 M	4.4%	\$383 M	4.5%
Education	\$13.5 M	3.6%	\$124 M	3.8%	\$328 M	3.8%
Entertainment	\$21.0 M	5.6%	\$187 M	5.6%	\$484 M	5.6%
Food and Beverages	\$54.7 M	14.7%	\$484 M	14.6%	\$1.25 B	14.6%
Furnishings and Equipment	\$13.0 M	3.5%	\$116 M	3.5%	\$300 M	3.5%
Gifts	\$9.11 M	2.4%	\$83.2 M	2.5%	\$217 M	2.5%
Health Care	\$29.6 M	7.9%	\$262 M	7.9%	\$675 M	7.8%
Household Operations	\$10.6 M	2.8%	\$95.9 M	2.9%	\$251 M	2.9%
Miscellaneous Expenses	\$5.48 M	1.5%	\$48.7 M	1.5%	\$126 M	1.5%
Personal Care	\$4.85 M	1.3%	\$43.1 M	1.3%	\$112 M	1.3%
Personal Insurance	\$2.74 M	0.7%	\$24.9 M	0.8%	\$65.2 M	0.8%
Reading	\$831 K	0.2%	\$7.39 M	0.2%	\$19.1 M	0.2%
Shelter	\$76.4 M	20.5%	\$680 M	20.5%	\$1.77 B	20.6%
Tobacco	\$2.26 M	0.6%	\$19.7 M	0.6%	\$50.5 M	0.6%
Transportation	\$71.7 M	19.2%	\$631 M	19.0%	\$1.63 B	18.9%
Utilities	\$27.9 M	7.5%	\$247 M	7.4%	\$638 M	7.4%

### Educational Attainment (2017)

Adult Population Age 25 Years or Over	10,585		90,180		235,930	
Elementary (Grade Level 0 to 8)	290	2.7%	3,469	3.8%	10,528	4.5%
Some High School (Grade Level 9 to 11)	409	3.9%	4,829	5.4%	12,582	5.3%
High School Graduate	2,377	22.5%	17,673	19.6%	44,581	18.9%
Some College	2,754	26.0%	23,525	26.1%	60,269	25.5%
Associate Degree Only	984	9.3%	8,055	8.9%	20,977	8.9%
Bachelor Degree Only	2,481	23.4%	20,254	22.5%	54,309	23.0%
Graduate Degree	1,291	12.2%	12,374	13.7%	32,683	13.9%

This report was produced using data from private and government sources deemed to be reliable. The information herein is provided without representation or warranty.

# EXPANDED PROFILE

2000-2010 Census, 2017 Estimates with 2022 Projections

Calculated using Weighted Block Centroid from Block Groups

Lat/Lon: 33.3352/-111.8765

RF5

## N Dobson Rd & West Warner Road

Chandler, AZ 85224

### Units In Structure (2010)

	1 mi radius		3 mi radius		5 mi radius	
1 Detached Unit	4,759	81.3%	35,319	70.5%	91,411	71.8%
1 Attached Unit	381	6.5%	2,899	5.8%	7,206	5.7%
2 to 4 Units	266	4.5%	2,757	5.5%	6,457	5.1%
5 to 9 Units	302	5.2%	4,448	8.9%	9,479	7.4%
10 to 19 Units	180	3.1%	4,294	8.6%	11,493	9.0%
20 to 49 Units	55	0.9%	912	1.8%	3,953	3.1%
50 or More Units	153	2.6%	1,814	3.6%	6,008	4.7%
Mobile Home or Trailer	58	1.0%	1,132	2.3%	3,306	2.6%
Other Structure	3	0.1%	46	0.1%	131	0.1%

### Homes Built By Year (2010)

Homes Built 2005 or later	32	0.5%	270	0.5%	765	0.6%
Homes Built 2000 to 2004	569	9.7%	5,696	11.4%	16,548	13.0%
Homes Built 1990 to 1999	1,080	18.5%	11,963	23.9%	38,821	30.5%
Homes Built 1980 to 1989	3,087	52.8%	18,445	36.8%	36,390	28.6%
Homes Built 1970 to 1979	1,035	17.7%	11,609	23.2%	30,164	23.7%
Homes Built 1960 to 1969	172	2.9%	2,444	4.9%	8,440	6.6%
Homes Built 1950 to 1959	82	1.4%	1,756	3.5%	3,867	3.0%
Homes Built Before 1949	24	0.4%	418	0.8%	1,423	1.1%

### Home Values (2010)

Home Values \$1,000,000 or More	22	0.5%	231	0.7%	567	0.7%
Home Values \$500,000 to \$999,999	203	4.9%	1,934	6.2%	4,935	6.4%
Home Values \$400,000 to \$499,999	124	3.0%	1,615	5.2%	4,740	6.1%
Home Values \$300,000 to \$399,999	457	10.9%	4,555	14.6%	12,554	16.3%
Home Values \$200,000 to \$299,999	1,140	27.3%	9,691	31.1%	25,595	33.1%
Home Values \$150,000 to \$199,999	1,228	29.4%	6,988	22.5%	16,260	21.1%
Home Values \$100,000 to \$149,999	920	22.0%	4,610	14.8%	9,992	12.9%
Home Values \$70,000 to \$99,999	133	3.2%	1,143	3.7%	2,590	3.4%
Home Values \$50,000 to \$69,999	46	1.1%	349	1.1%	955	1.2%
Home Values \$25,000 to \$49,999	16	0.4%	249	0.8%	751	1.0%
Home Values Under \$25,000	71	1.7%	963	3.1%	2,178	2.8%
Owner-Occupied Median Home Value	\$194,667		\$225,113		\$233,144	
Renter-Occupied Median Rent	\$991		\$908		\$895	

### Transportation To Work (2010)

Drive to Work Alone	5,677	80.7%	49,517	78.3%	129,846	77.0%
Drive to Work in Carpool	729	10.4%	6,766	10.7%	17,769	10.5%
Travel to Work by Public Transportation	97	1.4%	1,282	2.0%	4,472	2.7%
Drive to Work on Motorcycle	30	0.4%	472	0.7%	1,105	0.7%
Walk or Bicycle to Work	149	2.1%	1,793	2.8%	5,502	3.3%
Other Means	24	0.3%	479	0.8%	1,285	0.8%
Work at Home	328	4.7%	2,904	4.6%	8,588	5.1%

### Travel Time (2010)

Travel to Work in 14 Minutes or Less	1,970	29.4%	19,074	31.6%	47,444	29.7%
Travel to Work in 15 to 29 Minutes	4,168	62.2%	33,339	55.3%	84,048	52.5%
Travel to Work in 30 to 59 Minutes	1,801	26.9%	16,214	26.9%	45,834	28.6%
Travel to Work in 60 Minutes or More	212	3.2%	2,885	4.8%	7,896	4.9%
Average Minutes Travel to Work	19.9		19.9		20.6	

This report was produced using data from private and government sources deemed to be reliable. The information herein is provided without representation or warranty.