

## 655 Mariners Island Blvd., Suite 305A

San Mateo, CA

Suite 305A:  $\pm$ 2,000 RSF  
available

Ideal for accountants, lawyers,  
or financial services

2nd floor office space

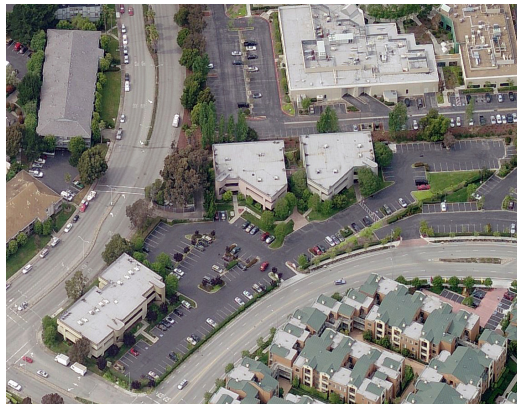
5 large private offices with  
window view, kitchen, conference  
room

Close to Hwy 92 and 101

Includes semi-private  
bathrooms, plenty of parking,  
storage room, private outside  
entrance access, air conditioning  
24/7 and utilities

Available June 1, 2019

**\$3.60 PSF**  
**Full Service**



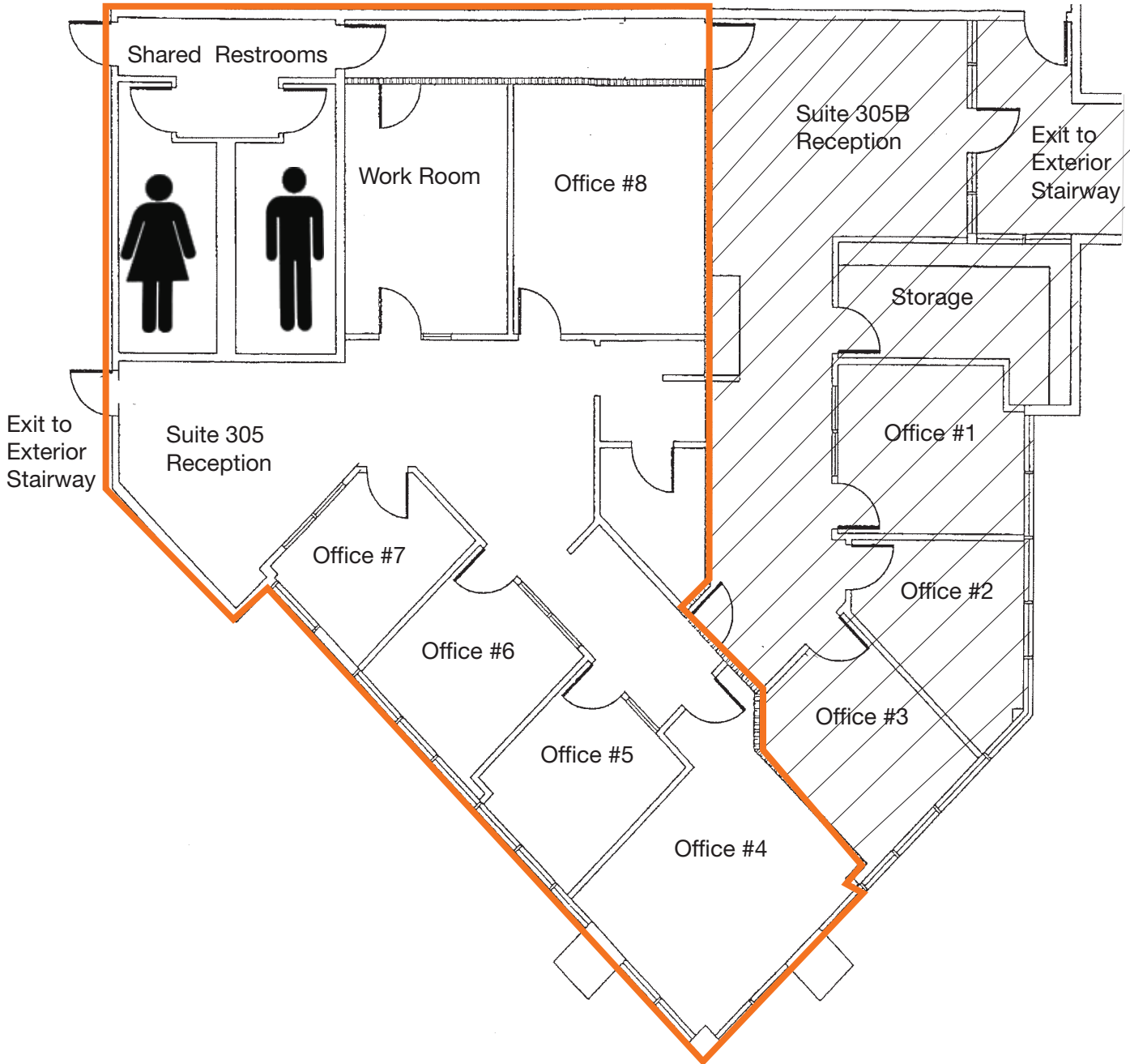
### Location



### Contact

**Joe Cammarata**  
Senior Vice President  
650.769.3516  
joe@kiddermathews.com  
LIC #01366451

## 655 Mariners Island Boulevard, Suite 305A



**Joe Cammarata**  
Senior Vice President  
650.769.3516  
joec@kiddermathews.com  
LIC #01366451