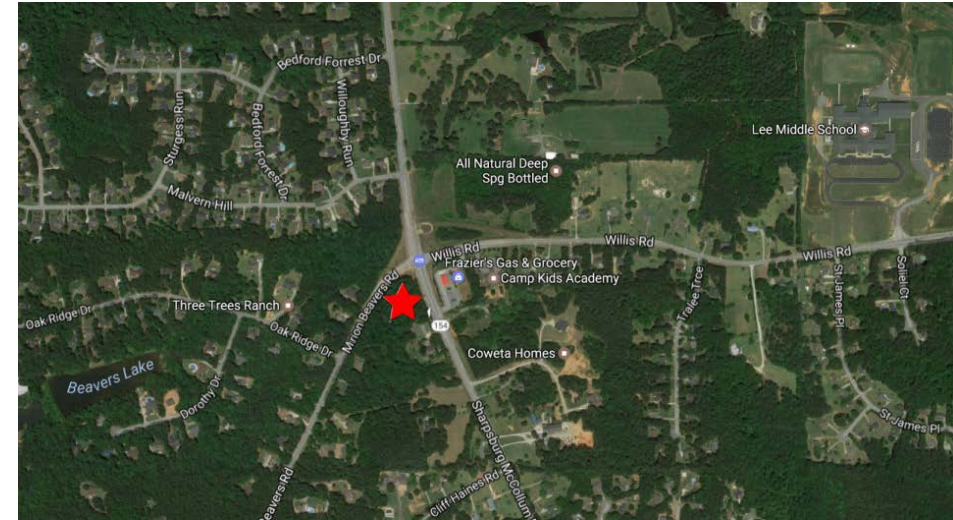


LAND FOR SALE

+/- 3 Acres on GA Hwy 154 & Marion Beavers Rd, Sharpsburg, GA



Property Profile



- Size: 3.0 Acres
- Price: \$250,000 per Acre
- Currently Zoned: RC (Rural Conservation)
- Traffic Counts on Hwy 154:
North of Site: 12,410 VPD
South of Site: 11,320 VPD
- Signalized Intersection with Great Visibility and Frontage on GA Hwy 154
- All Utilities Except Sewer Available
- County: Coweta
- Excellent C-Store or Retail Strip Center Site



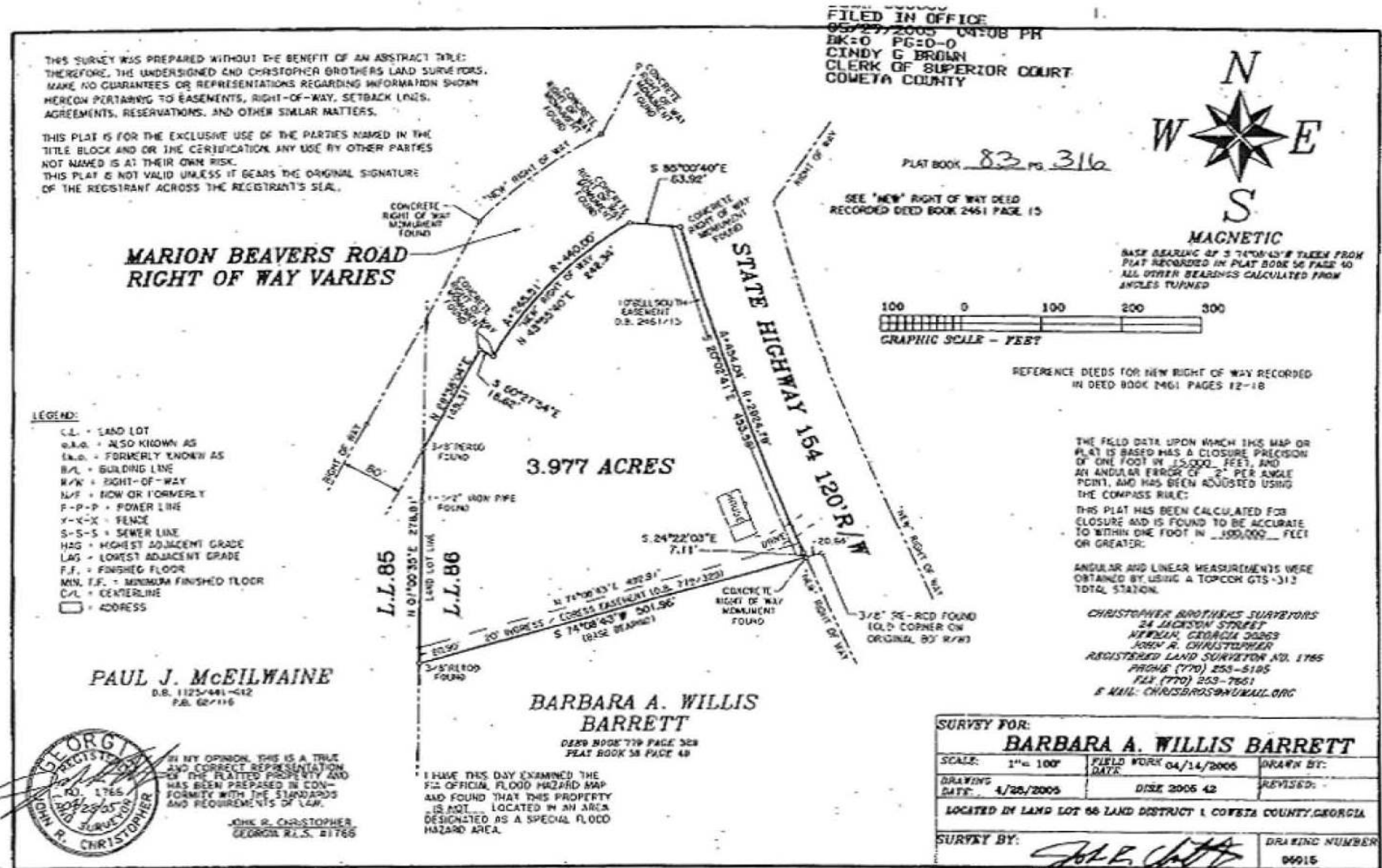
For more information please contact:
Brent Randolph Cell: 770.318.6815

770.632.4000 | rwcre.net
900 Westpark Drive, Suite 300 | Peachtree City, GA 30269

LAND FOR SALE

+/- 3 Acres on GA Hwy 154 & Marion Beavers Rd, Sharpsburg, GA

Survey



For more information please contact:
Brent Randolph Cell: 770.318.6815

770.632.4000 | rwcre.net
900 Westpark Drive, Suite 300 | Peachtree City, GA 30269

This information has been obtained from sources believed reliable. While we do not doubt its accuracy we have not verified it and make no guarantee, warranty or representation about