

# greenvale, ny

## 32 glen cove road

highly visible retail space | available for lease



DEMOGRAPHICS	1 MILE	3 MILES	5 MILES
Population	6,184	59,227	223,741
Median HHI	\$198,324	\$170,541	\$141,830
Daytime Population	5,192	36,899	171,117

Available	2,100 square feet
Asking Rent	Upon request
Taxes	TBD
Parking	34 spaces with an easement to Krypell property
Area Retail	Stop & Shop, Starbucks, Moe's Southwest Grill, Taco Bell, Grace's Marketplace, T.J.Maxx, Vanilla Sky, Lester's, The UPS Store, P.C. Richard & Son, T-Mobile, Citibank, Equinox, and many more
Comments	<ul style="list-style-type: none"><li>• excellent exposure on Glen Cove Road with 43,120 vehicles per day</li><li>• located just North of Northern Boulevard with 23,037 vehicles per day</li><li>• unbeatable branding opportunity</li><li>• access to New York's most affluent shoppers</li></ul>

For More Information:

Russel Helbling | [helbling@sabre.life](mailto:helbling@sabre.life) | T 516 874 8070 x1516

**sabre.life**

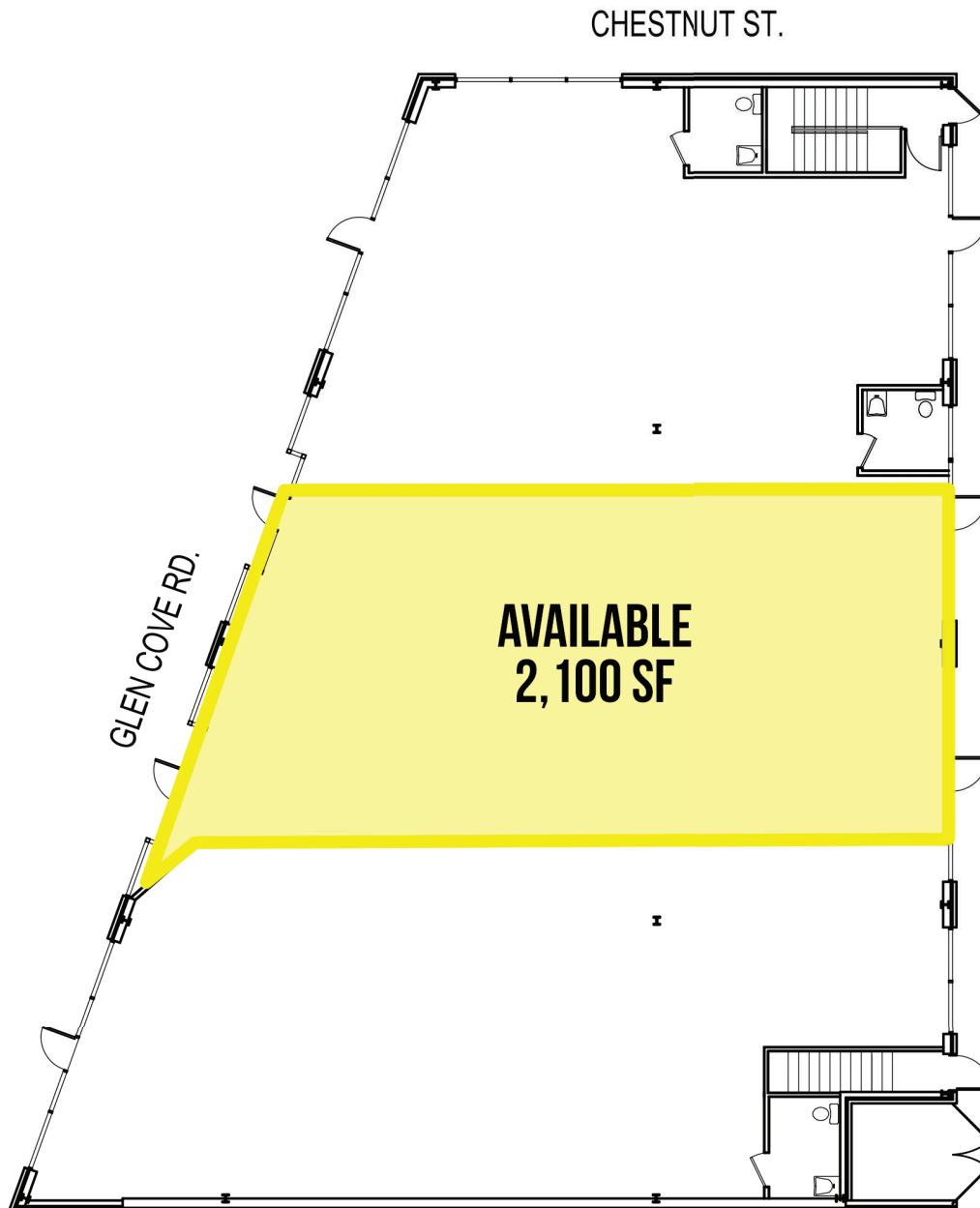




# greenvale, ny

32 glen cove road

## FLOOR PLAN



For More Information:  
Russel Helbling | [helbling@sabre.life](mailto:helbling@sabre.life) | T 516 874 8070 x1516

**sabre.life**





# greenvale, ny

32 glen cove road



For More Information:

Russel Helbling | [helbling@sabre.life](mailto:helbling@sabre.life) | T 516 874 8070 x1516

Sabre Real Estate Group, LLC

500 Old Country Road Garden City NY 11530

500 Route 17 South Hasbrouck Heights NJ 07604

**sabre.life**

© Sabre Real Estate Group, LLC. This information has been obtained from sources believed reliable. We have not verified it and make no guarantee, warranty or representation about it. Any projections, opinions, assumptions or estimates used are for example only and do not represent the current or future performance of the property. You and your advisors should conduct a careful, independent investigation of the property to determine to your satisfaction the suitability of the property for your needs.

