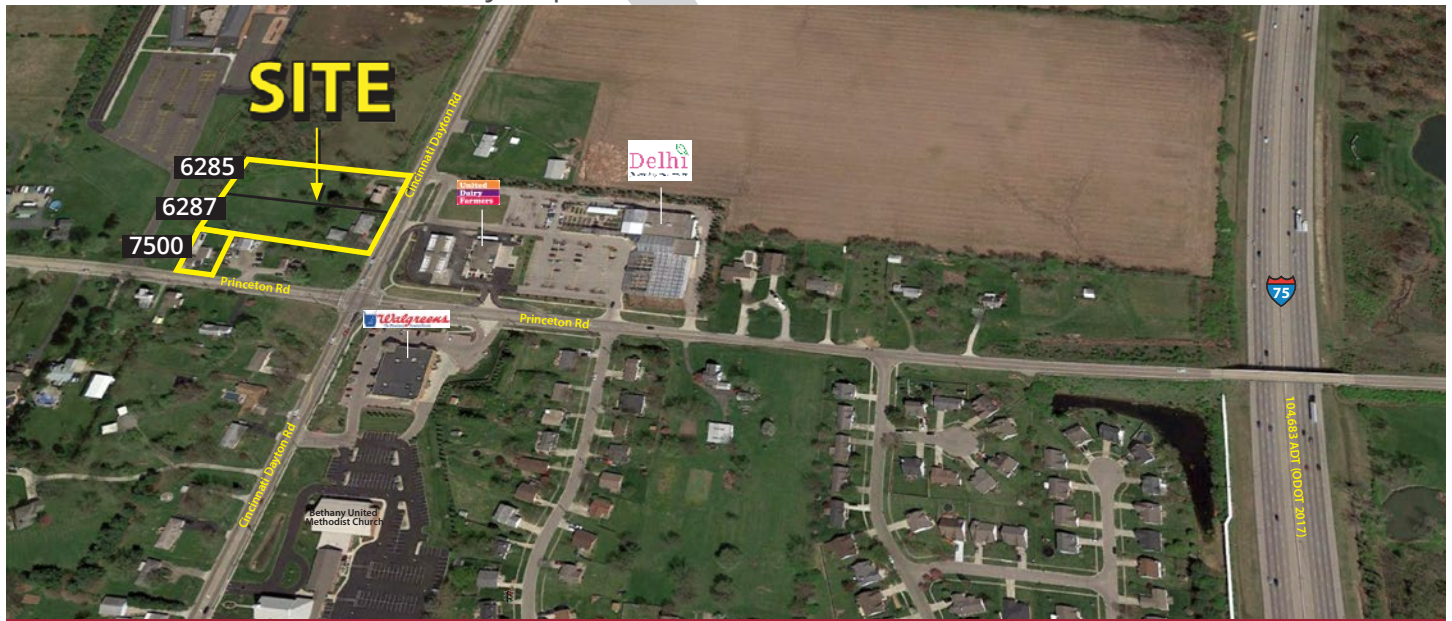


CINCINNATI DAYTON ROAD LAND

6285 - 6287 Cincinnati Dayton Road, Liberty Twp, OH 45044
and 7500 Princeton Road, Liberty Twp, OH 45044

2.8+ Acres Available For SALE



Property Details:

- Located in fast growing Liberty Twp., 2 miles north of new Liberty Center development
- Across from Walgreens and United Dairy Farmers

6285 Cincinnati Dayton Road	6287 Cincinnati Dayton Road	7500 Princeton Road
\$369,000	\$329,900	\$300,000
1.38 Acres	1.13 Acres	0.3 Acres

Demographics:

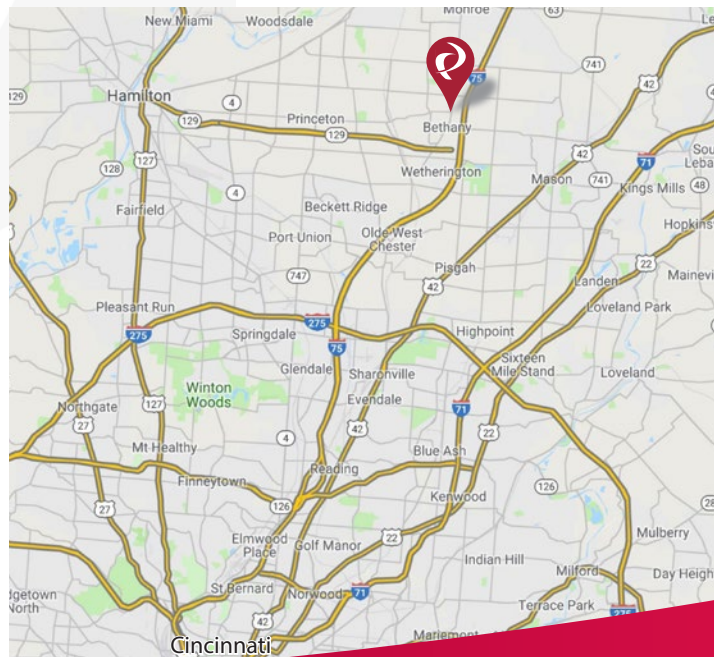
2018 Estimates	1 Mile	3 Mile	5 Mile
Population	3,868	41,835	121,172
Households	1,276	13,803	41,059
Median Household Income	\$110,036	\$130,440	\$108,872
Total Number of Employees	2,125	15,854	43,081

Traffic Counts: (ODOT 2017)

	ADT
Cincinnati Dayton Rd. near Bethany Rd.	22,574
SR 129	48,666
I-75	104,683

Contact: Zachary Schunn

513.489.3343 x5
zschunn@edgegp.com



LET US GIVE YOU AN EDGE



128 East Second Street | Suite B | Covington, KY 41011 | 513.489.3343 | edgegp.com

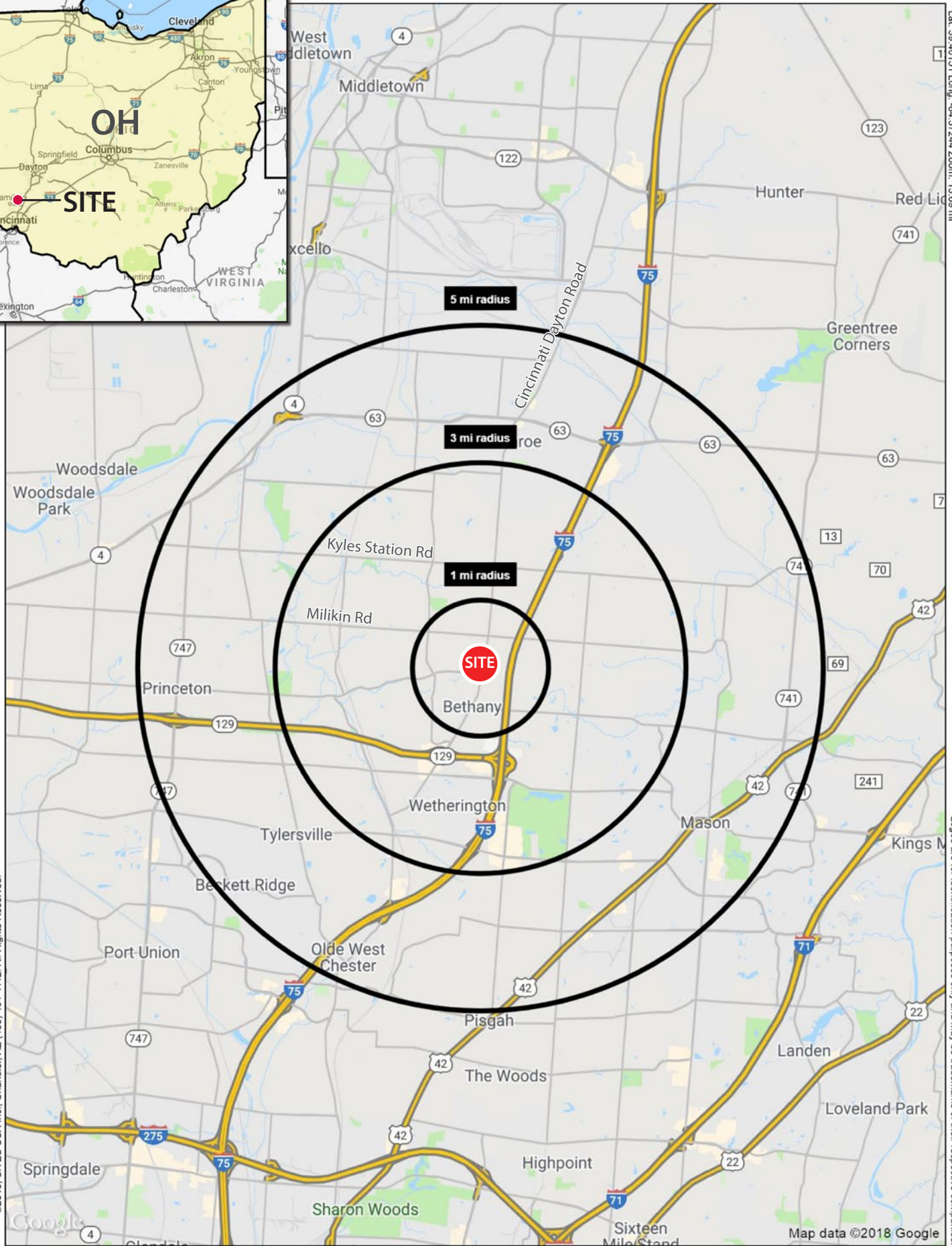
Proprietary to Edge Real Estate Group and confidential. Information contained herein has been obtained from sources deemed reliable, but is not guaranteed and is subject to change.

CINCINNATI DAYTON ROAD LAND

6285 - 6287 Cincinnati Dayton Road, Liberty Twp, OH 45044
 and 7500 Princeton Road, Liberty Twp, OH 45044



Lat: 39.40151 Long: -84.37244 Zoom: 13.69 mi



Logos are for identification purposes only and may be trademarks of their respective companies

©2018, SITES USA Inc., Chandler, AZ (480) 491-1112. All Rights Reserved.

SUMMARY PROFILE

2000-2010 Census, 2018 Estimates with 2023 Projections

Calculated using Weighted Block Centroid from Block Groups



Lat/Lon: 39.3923/-84.3709

RS1

6285 Cincinnati Dayton Rd

Liberty Twp., OH 45044

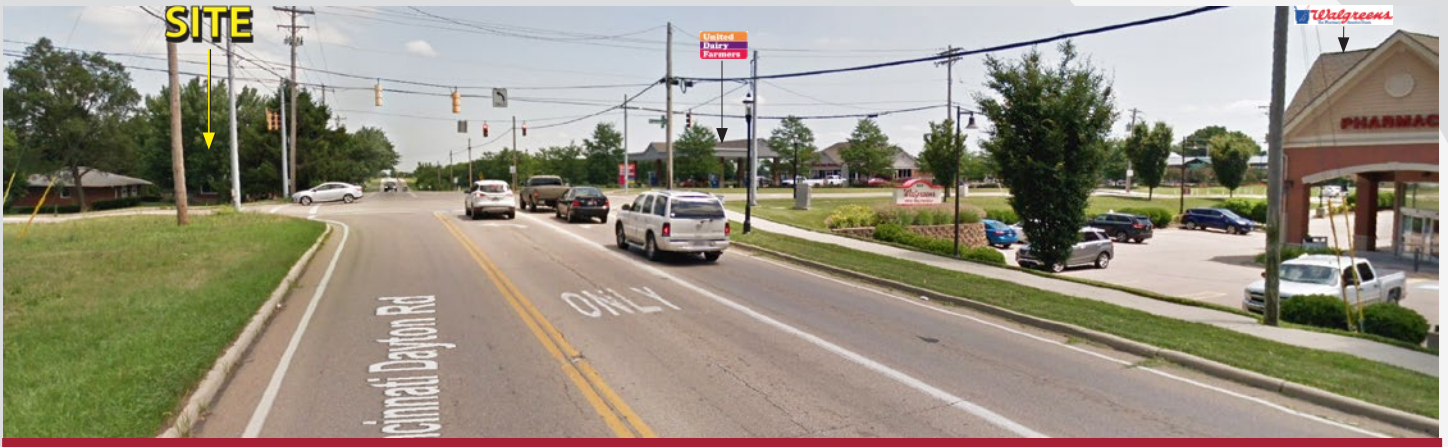
1 mi radius 3 mi radius 5 mi radius

	1 mi radius	3 mi radius	5 mi radius	
POPULATION	2018 Estimated Population	3,868	41,835	121,172
	2023 Projected Population	3,966	43,145	125,100
	2010 Census Population	3,961	38,271	113,694
	2000 Census Population	3,190	24,114	83,443
	Projected Annual Growth 2018 to 2023	0.5%	0.6%	0.6%
	Historical Annual Growth 2000 to 2018	1.2%	4.1%	2.5%
	2018 Median Age	34.3	36	37.1
HOUSEHOLDS	2018 Estimated Households	1,276	13,803	41,059
	2023 Projected Households	1,317	14,330	42,746
	2010 Census Households	1,267	12,254	37,216
	2000 Census Households	989	7,350	27,636
	Projected Annual Growth 2018 to 2023	0.6%	0.8%	0.8%
	Historical Annual Growth 2000 to 2018	1.6%	4.9%	2.7%
RACE AND ETHNICITY	2018 Estimated White	85.1%	82.4%	81.3%
	2018 Estimated Black or African American	6.7%	6.2%	7.4%
	2018 Estimated Asian or Pacific Islander	5.0%	8.5%	8.1%
	2018 Estimated American Indian or Native Alaskan	0.1%	0.1%	0.2%
	2018 Estimated Other Races	3.1%	2.7%	3.1%
	2018 Estimated Hispanic	2.5%	2.9%	3.6%
INCOME	2018 Estimated Average Household Income	\$112,896	\$153,190	\$128,731
	2018 Estimated Median Household Income	\$110,036	\$130,440	\$108,872
	2018 Estimated Per Capita Income	\$37,266	\$50,562	\$44,231
EDUCATION (AGE 25+)	2018 Estimated Elementary (Grade Level 0 to 8)	1.3%	1.3%	1.5%
	2018 Estimated Some High School (Grade Level 9 to 11)	2.6%	2.3%	4.0%
	2018 Estimated High School Graduate	21.4%	15.5%	21.0%
	2018 Estimated Some College	18.3%	17.3%	17.7%
	2018 Estimated Associates Degree Only	13.2%	8.8%	7.4%
	2018 Estimated Bachelors Degree Only	25.5%	33.1%	29.9%
	2018 Estimated Graduate Degree	17.7%	21.7%	18.5%
BUSINESS	2018 Estimated Total Businesses	165	1,473	3,767
	2018 Estimated Total Employees	2,125	15,854	43,081
	2018 Estimated Employee Population per Business	12.9	10.8	11.4
	2018 Estimated Residential Population per Business	23.5	28.4	32.2

This report was produced using data from private and government sources deemed to be reliable. The information herein is provided without representation or warranty.

CINCINNATI DAYTON ROAD LAND

6285 - 6287 Cincinnati Dayton Road, Liberty Twp, OH 45044
and 7500 Princeton Road, Liberty Twp, OH 45044



Contact:
Zachary Schunn

513.489.3343 x5
zschunn@edgegp.com

128 East Second Street
Suite B
Covington, KY 41011
513.489.3343
edgegp.com

LET US GIVE YOU AN EDGE



128 East Second Street | Suite B | Covington, KY 41011 | 513.489.3343 | edgegp.com

Proprietary to Edge Real Estate Group and confidential. Information contained herein has been obtained from sources deemed reliable, but is not guaranteed and is subject to change.