

# FOR LEASE

## PRIME LOCATION!

5876 Williston Road, Williston, VT



VT Commercial is pleased to offer this former Friendly's Restaurant site for lease. High traffic location with prime visibility from Route 2, 2A and Taft Corners. Municipal Water and Sewer, WW allocation for 3800 gpd, 89 seats and 55 on site parking spaces. Built in 1987 and closed approximately 2 years ago. 790' of frontage. Easy to find location. Located conveniently off Interstate 89 at Exit 12. Maple Tree Place and Finney Crossing next door. The kitchen has a hood system in place, 3 bay sink in place and other kitchen equipment in place.

**SIZE:**  
2,992 SF

**USE:**  
Restaurant

**PRICE:**  
\$40/SF NNN plus utilities

**AVAILABLE:**  
Immediately

**PARKING:**  
55 on site parking spaces

**LOCATION:**  
5876 Williston Road, Williston

Information contained herein is believed to be accurate, but is not warranted. This is not a legally binding offer to sell or lease.



For more information, please contact:

LINDA I LETOURNEAU

802-343-2107

[linda@vtcommercial.com](mailto:linda@vtcommercial.com)

208 FLYNN AVENUE, STUDIO 2i

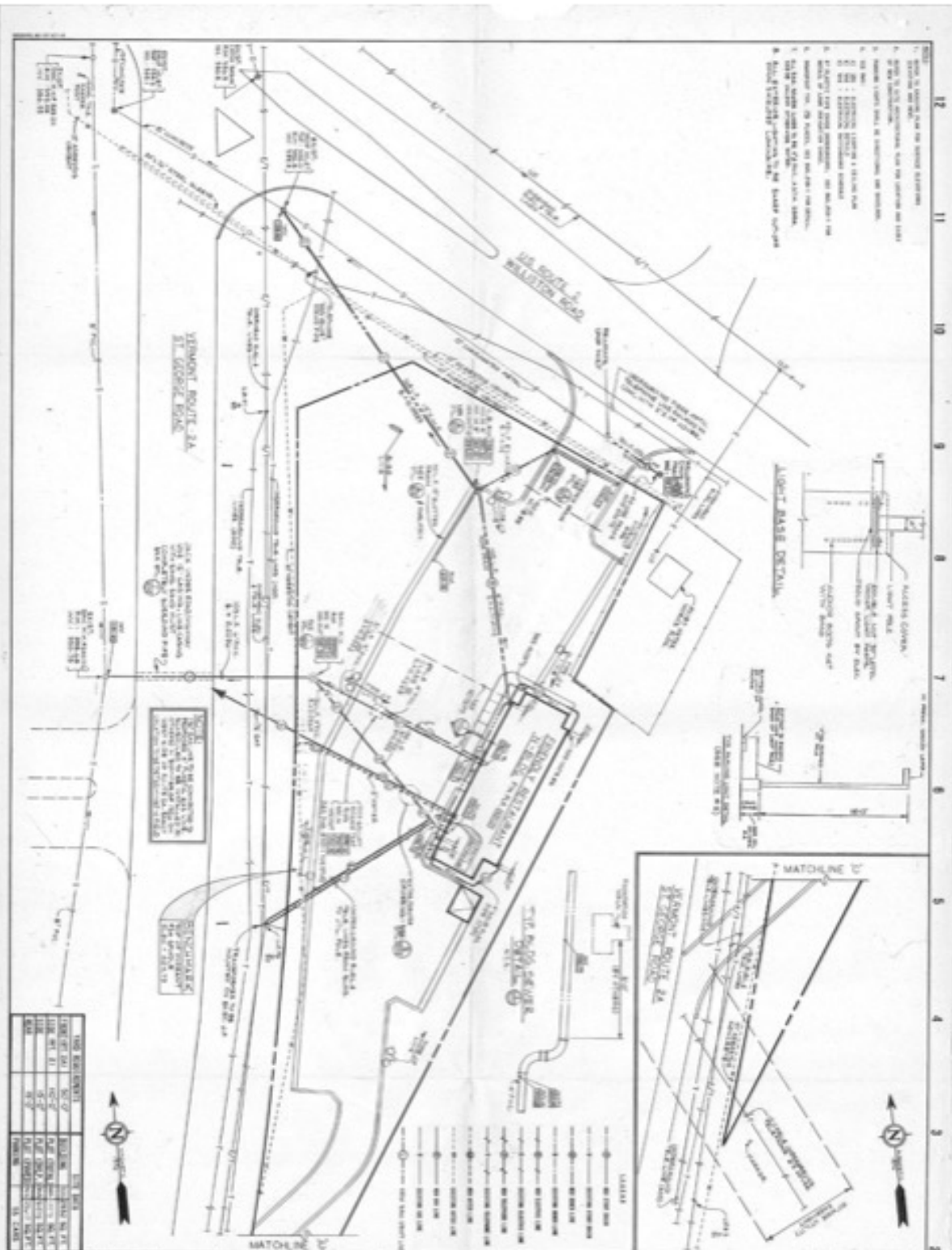
BURLINGTON, VT 05401

[www.vtcommercial.com](http://www.vtcommercial.com)

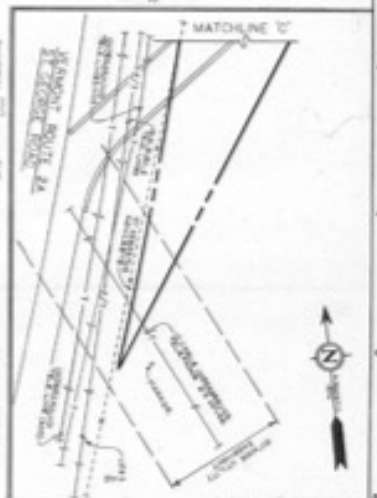








1. SEE PLAN FOR THE EXISTING BUILDING
2. SEE PLAN FOR THE EXISTING DRIVE
3. SEE PLAN FOR THE EXISTING SIDEWALK
4. SEE PLAN FOR THE EXISTING CURB
5. SEE PLAN FOR THE EXISTING PAVEMENT
6. SEE PLAN FOR THE EXISTING UTILITIES
7. SEE PLAN FOR THE EXISTING TREES
8. SEE PLAN FOR THE EXISTING LANDSCAPE
9. SEE PLAN FOR THE EXISTING LIGHTING
10. SEE PLAN FOR THE EXISTING SIGNAGE
11. SEE PLAN FOR THE EXISTING FURNITURE
12. SEE PLAN FOR THE EXISTING UTILITIES



JOB INFORMATION		SHEET NO.	
DATE OF JOB	NO. OF SHEETS	SHEET NO.	TOTAL SHEETS
10/1/82	1	1	1
10/1/82	1	1	1
10/1/82	1	1	1
10/1/82	1	1	1
10/1/82	1	1	1
10/1/82	1	1	1
10/1/82	1	1	1
10/1/82	1	1	1
10/1/82	1	1	1

**su**  
**1**  
 WILLISTON, VT.  
 ROUTE 2 & 2A  
 SITE  
 UTILITIES  
 PLAN  
 10/1/82  
 10/1/82

