

1540 1555 1565

RIVER PARK DRIVE  
SACRAMENTO, CA

## FULL 5% COMMISSION PLUS \$1.00 PSF BONUS

- ALL NEW DEALS WITH A MINIMUM 3 YEAR LEASE TERM
- BROKER BONUS PROGRAM VALID THROUGH SEPTEMBER 30, 2019
- SUBJECT TO LANDLORD APPROVAL

## PROPERTY HIGHLIGHTS

- Completely renovated and revitalized office park
- Excellent Proximity to numerous retail & dining amenities
- Great access to Business 80 & Highway 160
- On-site Café
- Conference facilities
- 4.00/1,000 SF Parking Ratio



### SPENCER NIELSEN

Senior Associate  
+1 916 288 4531

spencer.nielsen@cushwake.com  
CA LIC #01964163

### KEVIN PARTINGTON

Executive Director  
+1 916 288 4807

kevin.partington@cushwake.com  
CA LIC #01199010

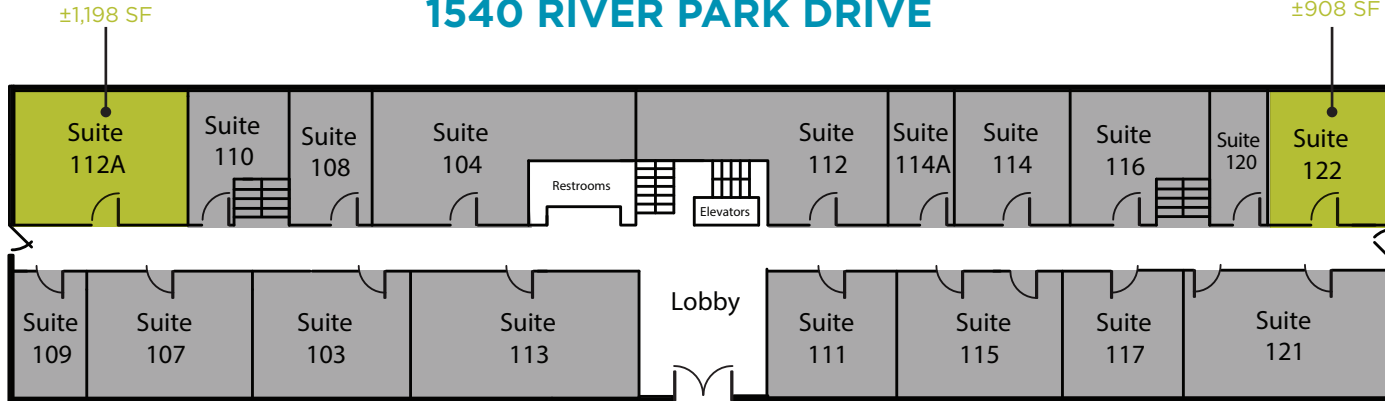
### SEAN MULLEN

Director  
+1 916 288 4811

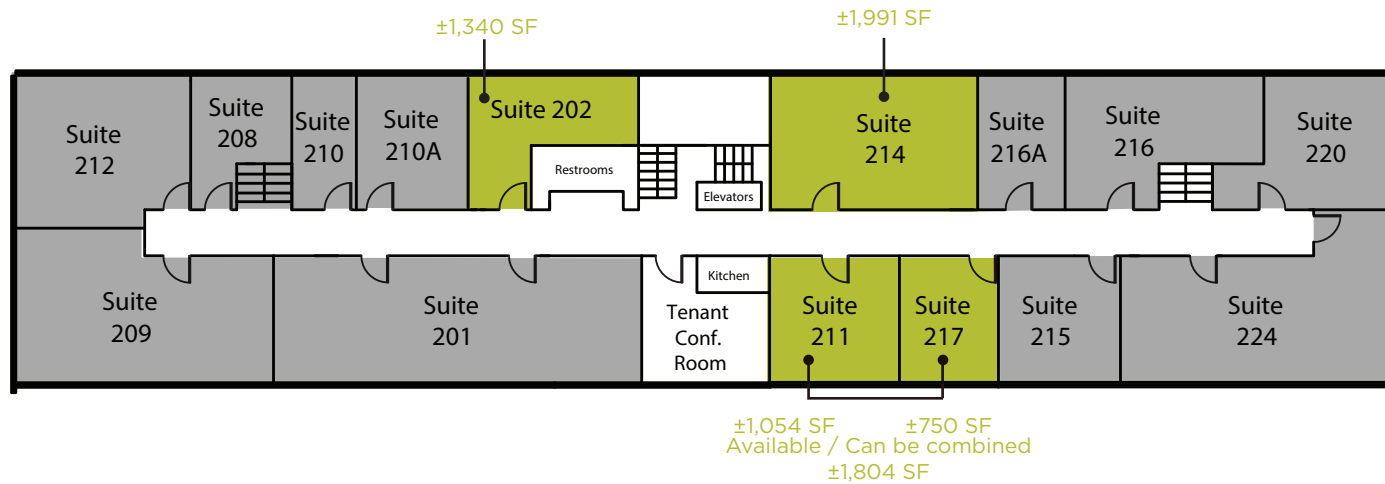
sean.mullen@cushwake.com  
CA LIC #01845406

1540 RIVER PARK DRIVE

1ST FLOOR



2ND FLOOR



AVAILABLE FOR LEASE     LEASED



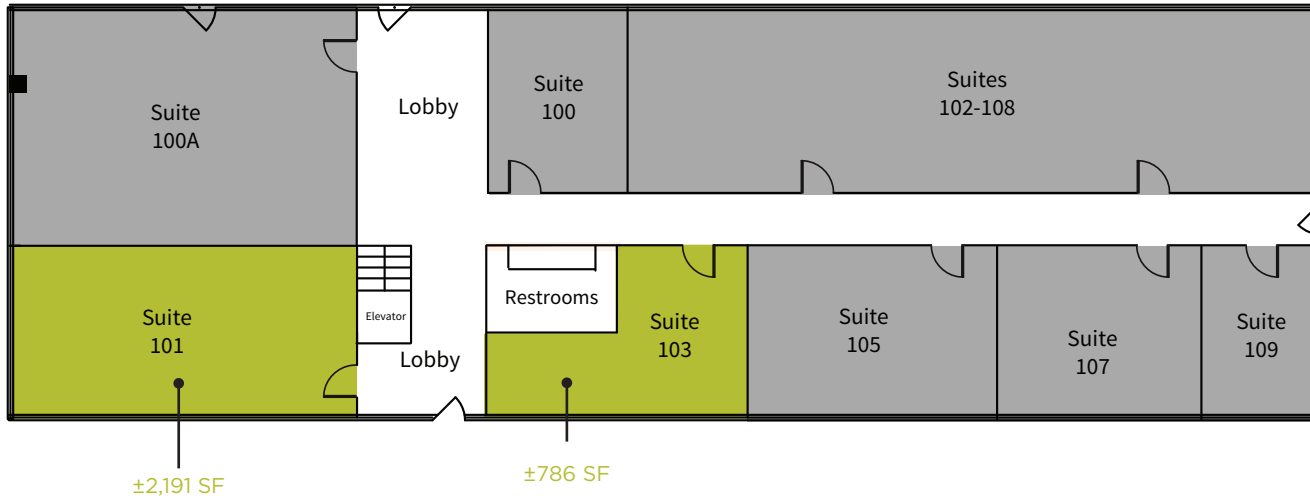
**SPENCER NIELSEN**  
Senior Associate  
+1 916 288 4531  
spencer.nielsen@cushwake.com  
CA LIC #01964163

**KEVIN PARTINGTON**  
Executive Director  
+1 916 288 4807  
kevin.partington@cushwake.com  
CA LIC #01199010

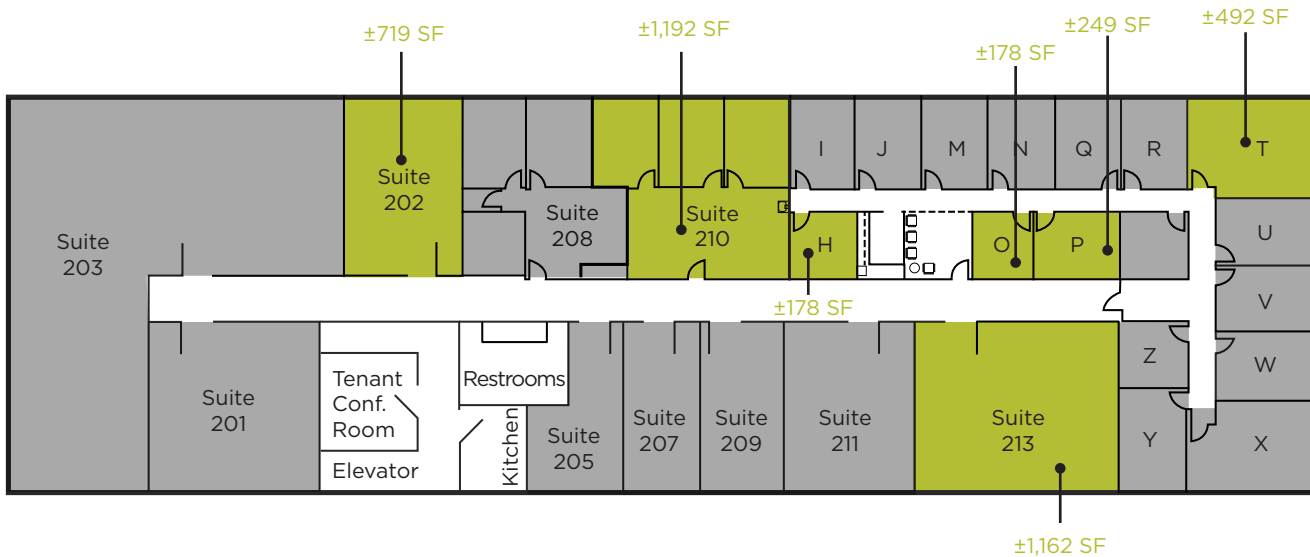
**SEAN MULLEN**  
Director  
+1 916 288 4811  
sean.mullen@cushwake.com  
CA LIC #01845406

1555 RIVER PARK DRIVE

1ST FLOOR



2ND FLOOR



AVAILABLE FOR LEASE     LEASED



**SPENCER NIELSEN**  
 Senior Associate  
 +1 916 288 4531  
 spencer.nielsen@cushwake.com  
 CA LIC #01964163

**KEVIN PARTINGTON**  
 Executive Director  
 +1 916 288 4807  
 kevin.partington@cushwake.com  
 CA LIC #01199010

**SEAN MULLEN**  
 Director  
 +1 916 288 4811  
 sean.mullen@cushwake.com  
 CA LIC #01845406

## PROPERTY PHOTOS



**SPENCER NIELSEN**  
Senior Associate  
+1 916 288 4531  
spencer.nielsen@cushwake.com  
CA LIC #01964163

**KEVIN PARTINGTON**  
Executive Director  
+1 916 288 4807  
kevin.partington@cushwake.com  
CA LIC #01199010

**SEAN MULLEN**  
Director  
+1 916 288 4811  
sean.mullen@cushwake.com  
CA LIC #01845406



**HBA**  
HOWBOUTARDEN

- CENTURY THEATRES
- NORDSTROM RACK
- HOMEGOODS
- THE CONTAINER STORE
- STARBUCKS
- CARTERS
- PINKBERRY
- TOMATINA
- MOD PIZZA
- JAMBA JUICE

**CAL EXPO**  
80+ EVENTS PER YEAR  
4M+ ANNUAL VISITORS



**POINT WEST**  
PLAZA

- KOHL'S
- OLD NAVY
- HOBBY LOBBY
- PIER 1 IMPORTS
- PETCO

**ARDEN**  
MALL

- MACY'S
- JCPENNEY
- APPLE
- COACH
- MICHAEL KORS
- ARMANI EXCHANGE
- SEARS
- NORDSTROM
- LULUEMON
- SEASON 52
- MAGGIANO'S
- MAC

**PROPERTY**

**MARKET**  
SQUARE

- UNITED ARTIST THEATRE
- BARNES & NOBLE
- CALIFORNIA PIZZA KITCHEN
- ULTA
- PLUTO'S
- URBAN OUTFITTERS



**SPENCER NIELSEN**  
Senior Associate  
+1 916 288 4531  
spencer.nielsen@cushwake.com  
CA LIC #01964163

**KEVIN PARTINGTON**  
Executive Director  
+1 916 288 4807  
kevin.partington@cushwake.com  
CA LIC #01199010

**SEAN MULLEN**  
Director  
+1 916 288 4811  
sean.mullen@cushwake.com  
CA LIC #01845406

*FOR MORE INFO, PLEASE CONTACT:*

---

**SPENCER NIELSEN | SENIOR ASSOCIATE**

+1 916 288 4531

[spencer.nielsen@cushwake.com](mailto:spencer.nielsen@cushwake.com)

CA LIC #01964163

**KEVIN PARTINGTON | EXECUTIVE DIRECTOR**

+1 916 288 4807

[kevin.partington@cushwake.com](mailto:kevin.partington@cushwake.com)

CA LIC #01199010

**SEAN MULLEN | DIRECTOR**

+1 916 288 4811

[sean.mullen@cushwake.com](mailto:sean.mullen@cushwake.com)

CA LIC #01845406

400 Capitol Mall, Suite 1800

Sacramento, CA 95814

+1 916 288 4800

[cushmanwakefield.com](http://cushmanwakefield.com)

