



FOR LEASE

3660 GEORGE DIETER DRIVE

El Paso, Texas



Neighborhood Center

### Property Highlights

- Total lot size: 38,639 SF
- Total space available: 3,600 SF
- Zoning: C-4
- Yera built: 2008
- Lease rate: \$12 /SF / YR, NNN
- Min.divisible: 1,200 SF
- Neighborhood Retail strip center with proximity to thousands of rooftops and a high traffic intersection of George Dieter and Montana. Traffic counts over 40,000 cars per day on Montana and over 8,000 on George Dieter.
- Located on George Dieter and immediately south of Montana Ave with McDonald's across the street. Easy access to and from Montana Avenue and about 2 miles west of Loop 375.

#### Michael Pace

Leasing Agent  
(915) 843 8888 ext. 807  
mpace@piresintl.com

5-B Butterfield Trail Boulevard  
El Paso, Texas 79906-4920  
Main (915) 843 8888  
[www.piresintl.com](http://www.piresintl.com)

*Independently Owned and Operated / A Member of the Cushman & Wakefield Alliance*

Cushman & Wakefield Copyright 2015. No warranty or representation, express or implied, is made to the accuracy or completeness of the information contained herein, and same is submitted subject to errors, omissions, change of price, rental or other conditions, withdrawal without notice, and to any special listing conditions imposed by the property owner(s). As applicable, we make no representation as to the condition of the property (or properties) in question.



FOR LEASE

3660 GEORGE DIETER DRIVE

El Paso, Texas



**Michael Pace**  
Leasing Agent  
915 843 8888 ext. 807  
mpace@piresintl.com.com

5-B Butterfield Trail Blvd.  
El Paso, TX 79906  
Main 915 843 8888  
Fax 915 843 8889  
[www.piresintl.com](http://www.piresintl.com)

Independently Owned and Operated / A Member of the Cushman & Wakefield Alliance

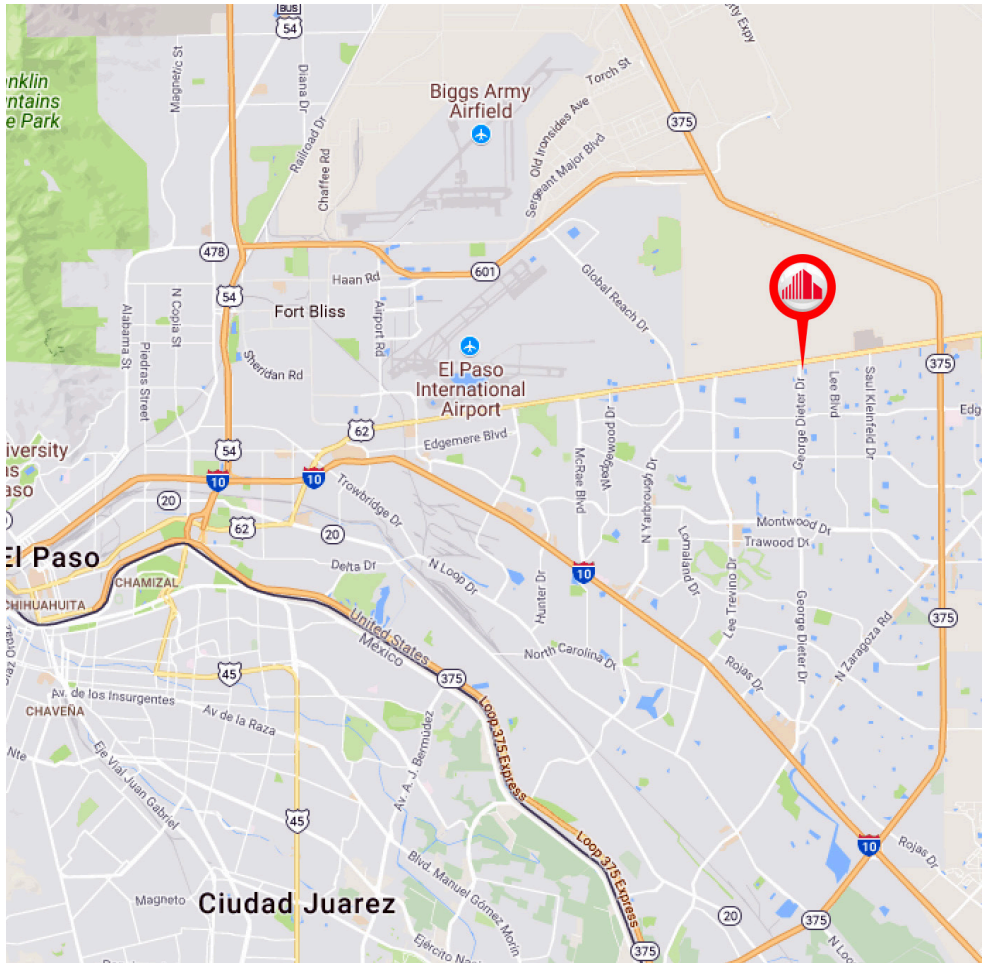
Cushman & Wakefield Copyright 2015. No warranty or representation, express or implied, is made to the accuracy or completeness of the information contained herein, and same is submitted subject to errors, omissions, change of price, rental or other conditions, withdrawal without notice, and to any special listing conditions imposed by the property owner(s). As applicable, we make no representation as to the condition of the property (or properties) in question.



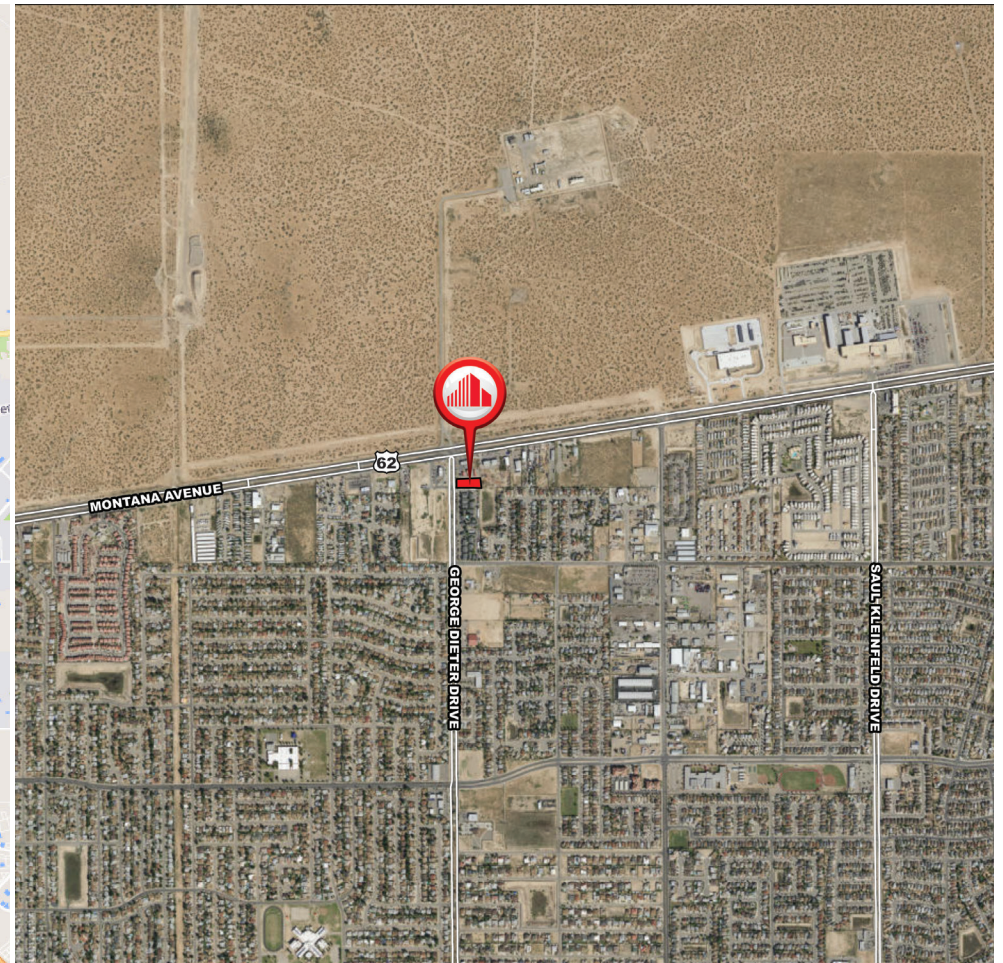
FOR LEASE

# 3660 GEORGE DIETER DRIVE

El Paso, Texas



MAP



AERIAL

**Michael Pace**  
Leasing Agent  
(915) 843 8888 ext. 807  
mpace@piresintl.com

5-B Butterfield Trail Boulevard  
El Paso, Texas 79906-4920  
Main (915) 843 8888  
[www.piresintl.com](http://www.piresintl.com)

*Independently Owned and Operated / A Member of the Cushman & Wakefield Alliance*  
Cushman & Wakefield Copyright 2015. No warranty or representation, express or implied, is made to the accuracy or completeness of the information contained herein, and same is submitted subject to errors, omissions, change of price, rental or other conditions, withdrawal without notice, and to any special listing conditions imposed by the property owner(s). As applicable, we make no representation as to the condition of the property (or properties) in question.