

PRIME TRIBECA LOCATION

418 WASHINGTON STREET
SOUTHWEST CORNER OF VESTRY STREET

FLOOR/SUITE: Partial Ground Floor

RSF: 5,300 Rentable SF

ASKING RENT: \$57.00 PSF

POSSESSION: Immediate

TERM: Negotiable

[DOWNLOAD FLOOR PLANS](#)

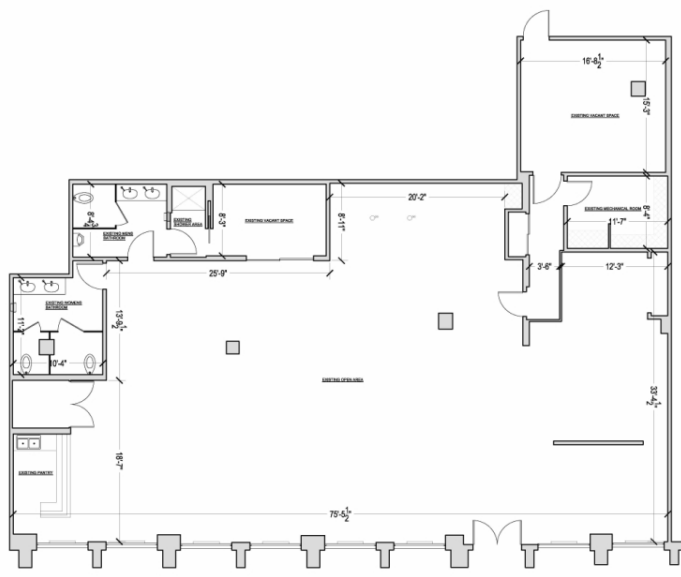
[DOWNLOAD PICTURES](#)

[DOWNLOAD FLYER](#)

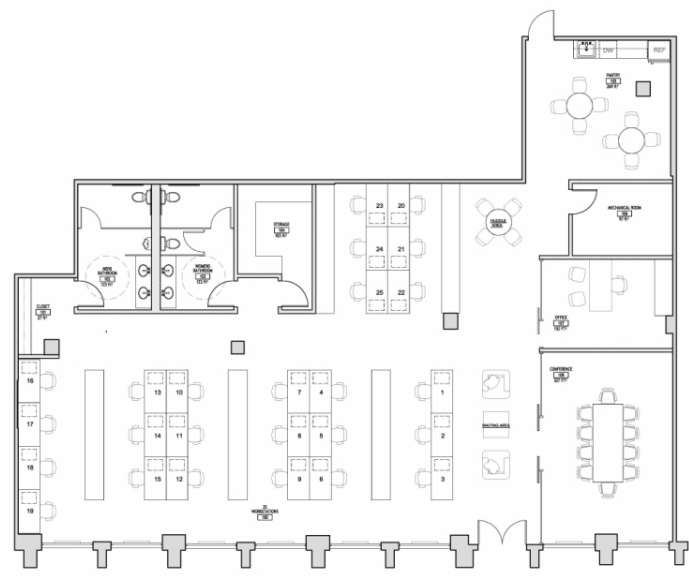


SPACE FEATURES

- Ground floor office space in the heart of Tribeca
- Bright unit with over 75 feet of frontage on Washington Street and direct cobble stone street exposures
- Primarily open space with concrete floor and exposed 12 foot ceiling heights
- Tenant controlled A/C and private bathrooms
- Walking distance to the 1,2, 3, A & C train lines
- Ideal space for galleries, showrooms, professional and medical office users



EXISTING CONDITION OPEN FLOOR PLAN



PROPOSED OFFICE FLOOR PLAN



FOR INFORMATION, PLEASE CONTACT:

ALLEN GUREVICH
SENIOR MANAGING DIRECTOR
(212) 609-7141
AGUREVICH@GFPRE.COM

MATTHEW COLAVITA
DIRECTOR
(212) 609-7143
MCOLAVITA@GFPRE.COM