



FOR LEASE

# 2424 Evergreen Park

OLYMPIA, WA



1,150 SF Available

**EVAN PARKER**  
360.705.0174  
evan.parker@kidder.com

**AMY EVANS**  
360.705.1377  
amy.evans@kidder.com

**ALICE MENKE**  
443.617.6844  
alice.menke@kidder.com

**Kidder Mathews**

This information supplied herein is from sources we deem reliable. It is provided without any representation, warranty, or guarantee, expressed or implied as to its accuracy. Prospective Buyer or Tenant should conduct an independent investigation and verification of all matters deemed to be material, including, but not limited to, statements of income and expenses. Consult your attorney, accountant, or other professional advisor.

KIDDER.COM

**FOR LEASE**

# 2424 Evergreen Park

OLYMPIA, WA

**1,150**

SQUARE FEET

**\$15.00**

PSF,NNN

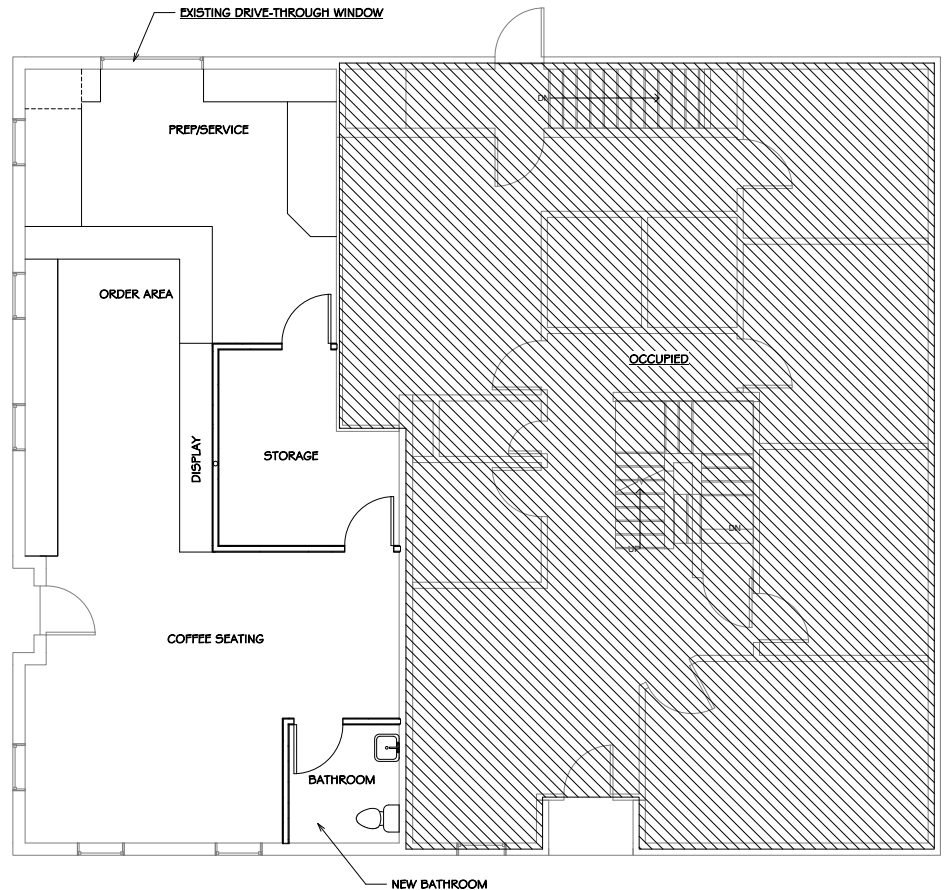
**IDEAL** office or food service space near Thurston County Courthouse and Highway 101

**DRIVE-THRU** available, perfect for coffee shop

**AMPLE** parking

**SHELL** condition, build-out negotiable

## Proposed Plan



① Main Floor - Proposed  
1/4" = 1'-0"

**EVAN PARKER**

360.705.0174

evan.parker@kidder.com

**AMY EVANS**

360.705.1377

amy.evans@kidder.com

**ALICE MENKE**

443.617.6844

alice.menke@kidder.com

[KIDDER.COM](http://KIDDER.COM)

**km** Kidder Mathews

This information supplied herein is from sources we deem reliable. It is provided without any representation, warranty, or guarantee, expressed or implied as to its accuracy. Prospective Buyer or Tenant should conduct an independent investigation and verification of all matters deemed to be material, including, but not limited to, statements of income and expenses. Consult your attorney, accountant, or other professional advisor.