

FOR SUBLEASE

# 498 W. TAYLOR STREET

SAN JOSE, CA 95110

RETAIL



## PROPERTY INFO

- + ±16,988 SF Ground Lease
- + Approximately 30 years of term remaining
- + APN: 259-11-020
- + Signalized Intersection @ Taylor and Coleman
- + Zoned Commercial
- + San Jose Market Center across the street including Target, Marshall's, Trader Joe's and more.
- + Submit offers

## CONTACT US

### RICK SHAFFER

Senior Vice President  
408 453 7430  
rick.shaffer@cbre.com  
Lic. 00853889

### JOHN SHAFFER

Associate  
408 453 7496  
john.shaffer@cbre.com  
Lic. 01971371

[www.cbre.us/siliconvalley](http://www.cbre.us/siliconvalley)

**CBRE**

FOR SUBLEASE

# 498 W. TAYLOR STREET

SAN JOSE, CA 95110

RETAIL



## AMENITIES MAP



FOR SUBLEASE

# 498 W. TAYLOR STREET

SAN JOSE, CA 95110

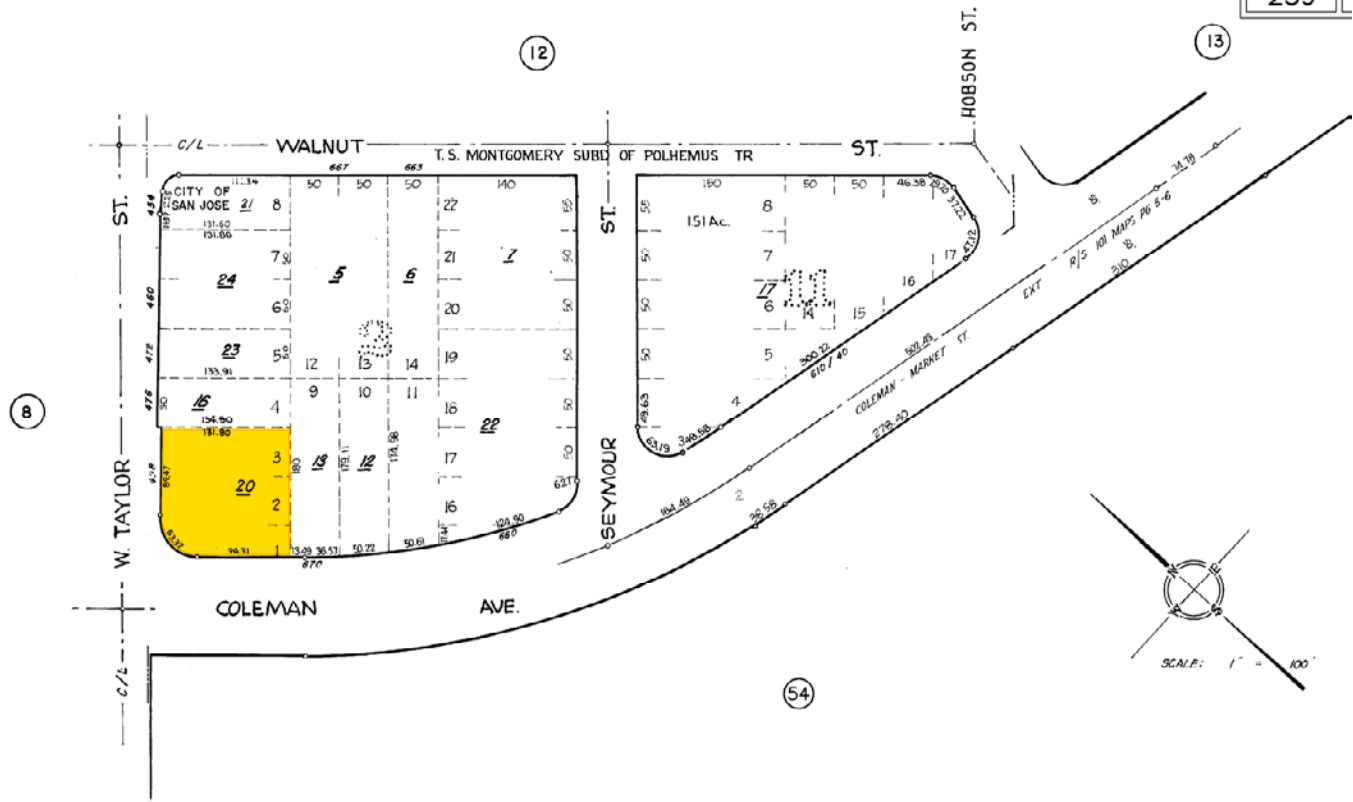
RETAIL



## PARCEL MAP

OFFICE OF COUNTY ASSESSOR — SANTA CLARA COUNTY, CALIFORNIA

BOOK  
259



LAWRENCE E. STONE  
Cadastral map for assessment  
Compiled under R. & T. C.  
Effective Roll Year 200-

## CONTACT US

### RICK SHAFFER

Senior Vice President  
408 453 7430  
rick.shaffer@cbre.com  
Lic. 00853889

### JOHN SHAFFER

Associate  
408 453 7496  
john.shaffer@cbre.com  
Lic. 01971371

© 2018 CBRE, Inc. This information has been obtained from sources believed reliable. We have not verified it and make no guarantee, warranty or representation about it. Any projections, opinions, assumptions or estimates used are for example only and do not represent the current or future performance of the property. You and your advisors should conduct a careful, independent investigation of the property to determine to your satisfaction the suitability of the property for your needs. Photos herein are the property of their respective owners and use of these images without the express written consent of the owner is prohibited. CBRE and the CBRE logo are service marks of CBRE, Inc. and/or its affiliated or related companies in the United States and other countries. All other marks displayed on this document are the property of their respective owners.