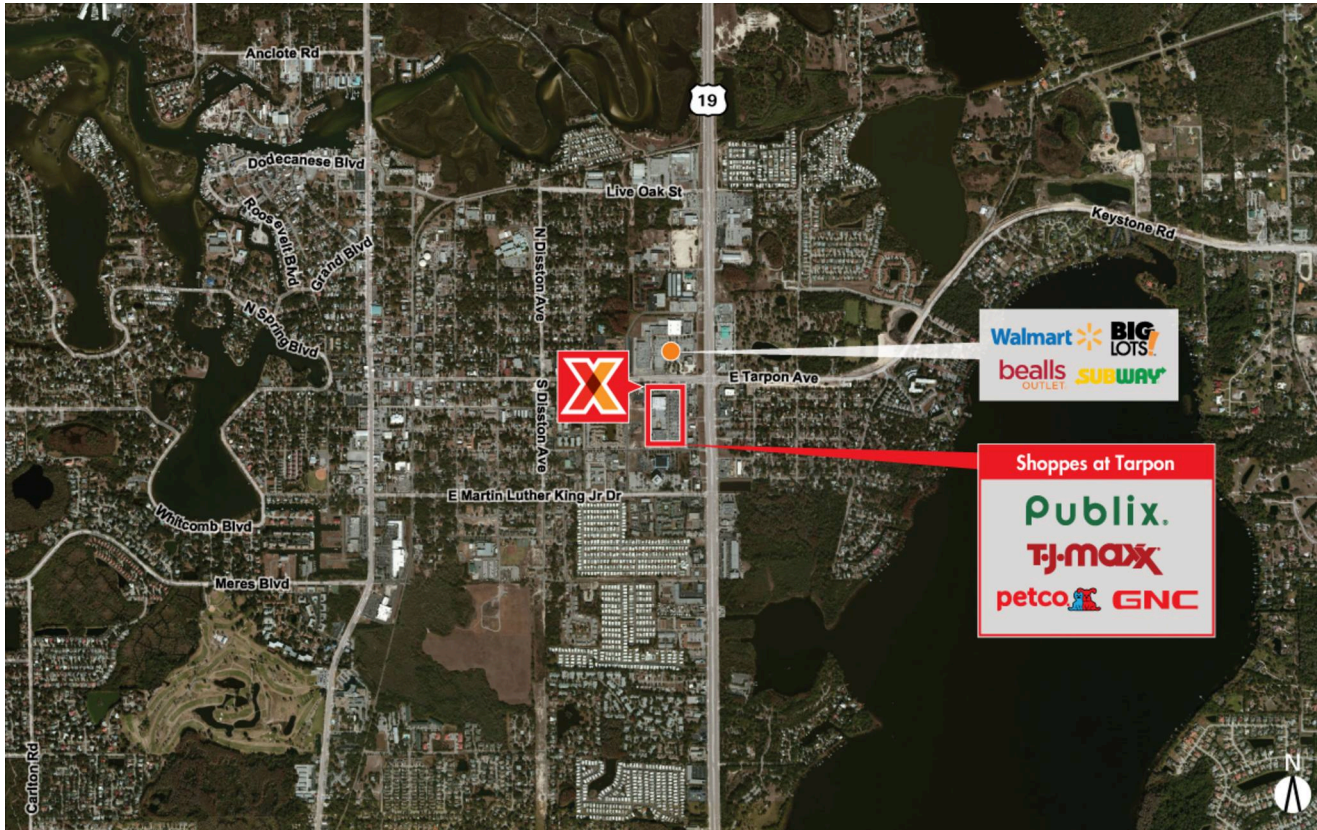


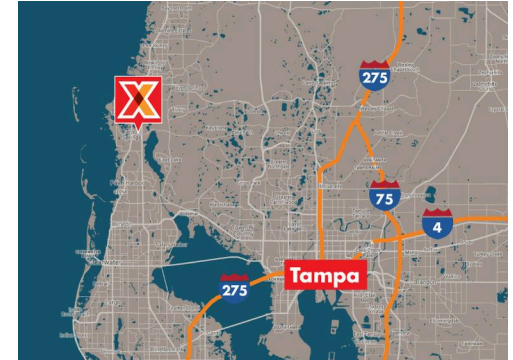
Tampa-St. Petersburg-Clearwater, FL

SHOPPES AT TARPON

28.144509, -82.742255
 Tarpon Avenue East & US-19N | Tarpon Springs, FL 34689



CENTER SIZE: 145,832 SF



DEMOGRAPHICS	1 MILE	3 MILE	5 MILE
👤	7,538	53,608	134,170
🏠	3,573	23,359	57,945
💰	\$51,645	\$70,914	\$70,568

Commercial real estate for rent in strong community center anchored by Publix, T.J. Maxx & Petco

Strategically located on the main access road leading to the Sponge Docks, a major tourist attraction in Tarpon Springs

Lease retail space with excellent visibility on Hwy 19 from 76,000+ vehicles daily

Highly trafficked storefronts with Publix drawing an average of 20,000+ customers/week

Outparcel space available for lease

Tampa-St. Petersburg-Clearwater, FL
SHOPPES AT TARPON

28.144509, -82.742255
 Tarpon Avenue East & US-19N | Tarpon Springs, FL 34689



AVAILABLE SPACE

FS-2A	2,000 SF
07	900 SF
22/23	3,000 SF

CURRENT RETAILERS

FS-1	Starbucks	1,450 SF
FS-2	Tropical Smoothie Cafe	1,500 SF
FS-3	T-Mobile	1,580 SF
FS-4	Mattress Firm	3,769 SF
FS-4A	Jersey Mike	1,231 SF
N.A.P.	Walmart	
N.A.P.1	Bank of America	
N.A.P.2	Wendy's	
01	Publix	44,840 SF
05	GNC	1,500 SF
06	The UPS Store	1,200 SF
08	Papa John's	1,800 SF
09	Bright House Networks	1,500 SF
10	Asia Nails	600 SF
11	Laundromat Express	1,500 SF
12	Smile Design	2,400 SF
13	Ulta Beauty	12,308 SF
14A	Petco	11,250 SF
17	T.J. Maxx	29,862 SF
17C	Panera Bread	4,934 SF
19	Goodyear	6,308 SF
20	Arby's	2,800 SF
21	Taco Bell	2,800 SF
24	Great Clips	1,200 SF
26	China Taste	1,200 SF
27	Verizon Wireless	2,400 SF

1718 - 01.18.19