

475 COLOMA STREET



SAUSALITO, CALIFORNIA

CREATIVE OFFICE / WAREHOUSE & STUDIO

FOR LEASE

MARINER'S LANDING | COLOMA STREET



475 COLOMA



475 COLOMA STREET | SAUSALITO

PROPERTY HIGHLIGHTS

475 Coloma Street is located in the heart of Sausalito recently remodelled. Located just blocks from Highway 101. The project is walking distance from multiple restaurants and other professional services. The property is located 2 miles from the Sausalito Ferry.

- Glass roll up doors and polished concrete floors
- The second floor has open ceiling with creative spaces
- Exposed wood ceilings
- Recently renovated building inside and out.
- Operating windows
- Spaces from 225 square feet up to 1,215 square feet

CONTACT US

BRIAN FOSTER
Managing Director
1 415 451 2437
brian.foster@cushwake.com
LIC #01393059

TREVOR BUCK
Executive Director
1 415 451 2436
trevor.buck@cushwake.com
LIC #01255462



475 COLOMA STREET



Spaces Available | For Lease

Suite	Use	Size	Description	Lease Rate / Mod. Gross	Utilities
Suite 110	Office	±267 RSF	Polished Concrete Office, LED lighting	\$1.99 PSF	Landlord
Suite 130	Creative/Office	±1,240 RSF	Roll Up Door, Flex Space, Kitchen, Polished CC	\$3.00 PSF	Landlord
Suite 215	Artist/Office	±601 RSF	Skylights, HW Floor, Exposed Beams, LED Lighting	\$1.99 PSF	Landlord
Suite 225 & 235	Artist/Office	±1,153 RSF	Exposed Beams, Skylights, Build to Suit, Flex Size w/235	\$1.99 PSF	Landlord
Suite 250	Artist/Office	±498 RSF	Second floor studio space, open work area, private office	\$1.99 PSF	Landlord
Suite 270	Artist	±796 RSF	RM Suite, Exposed Beams, LED Lighting, Plummed for Sink	\$1.99 PSF	Landlord
Suite 285	Artist	±446 RSF	Custom Paint, Sink, Hardwood, Sink, Large Skylight	\$1.99 PSF	Landlord
Suite 275	Artist/Office	±735 RSF	Exposed ceiling / LED lighting, bright and sunny	\$1.99 PSF	Landlord

BRIAN FOSTER
Managing Director
1 415 451 2437
brian.foster@cushwake.com
LIC #01393059

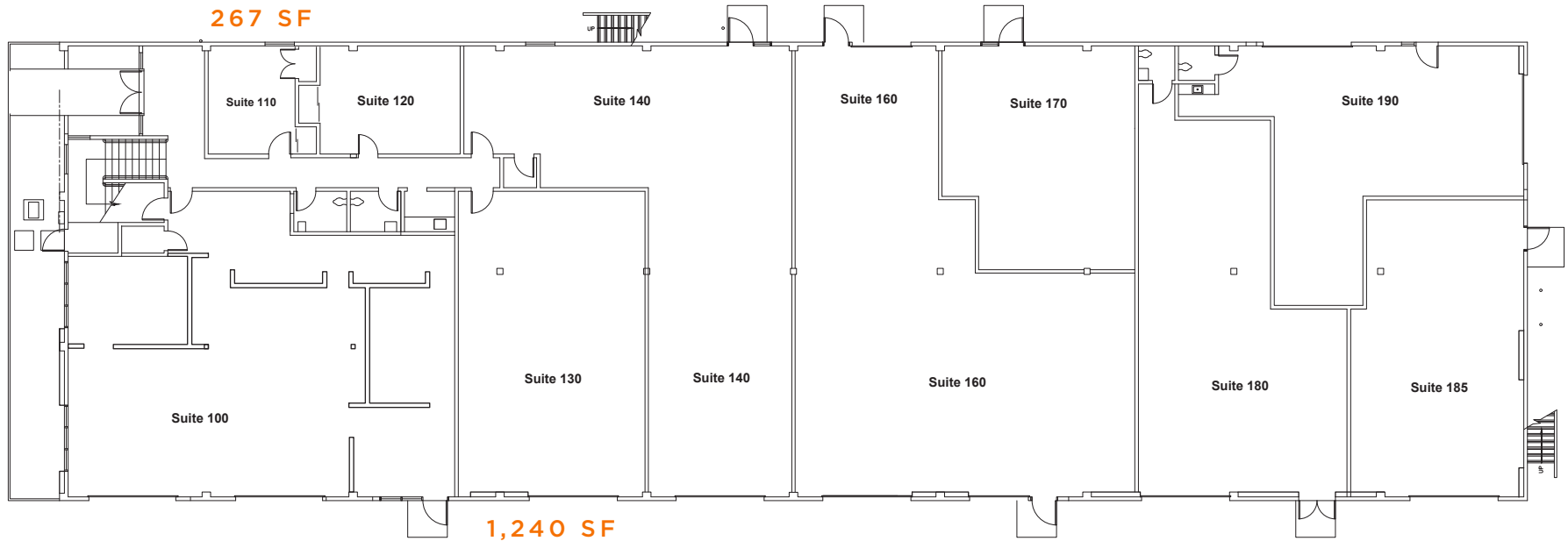
TREVOR BUCK
Executive Director
1 415 451 2436
trevor.buck@cushwake.com
LIC #01255462

475 COLOMA STREET



SAUSALITO, CALIFORNIA

SPACE AVAILABLE 1ST FLOOR



CONTACT US

BRIAN FOSTER
Managing Director
1 415 451 2437
brian.foster@cushwake.com
LIC #01393059

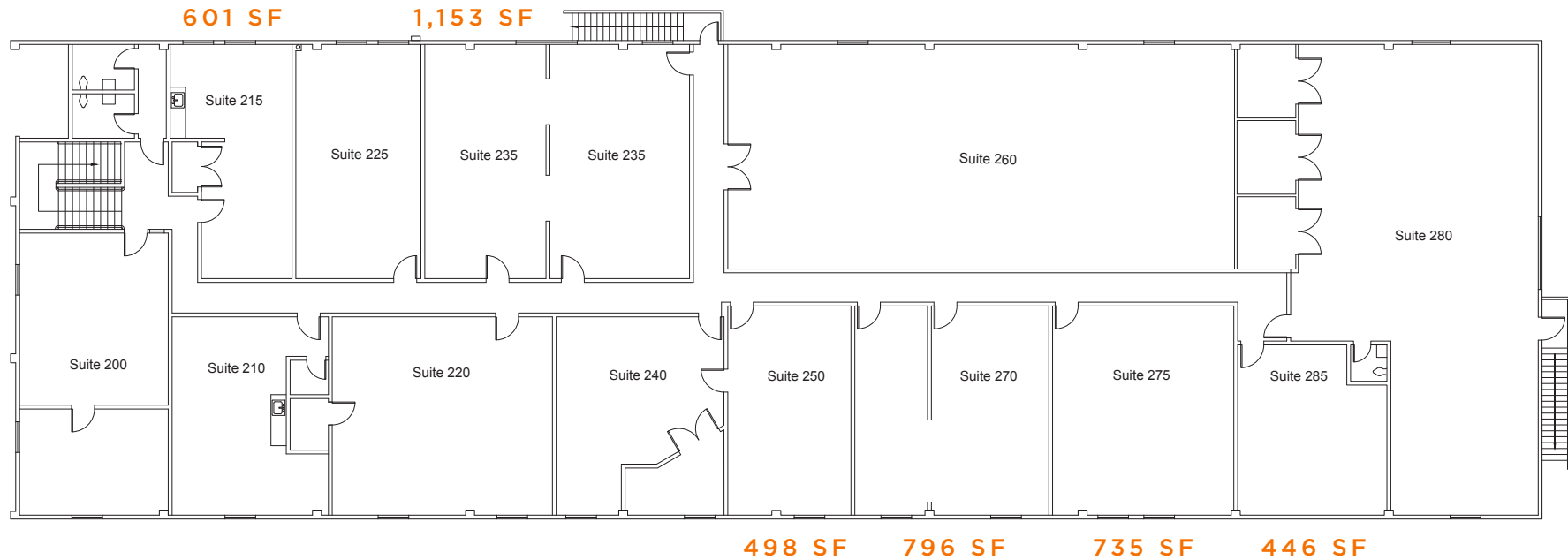
TREVOR BUCK
Executive Director
1 415 451 2436
trevor.buck@cushwake.com
LIC #01255462

475 COLOMA STREET



SAUSALITO, CALIFORNIA

SPACE AVAILABLE SECOND FLOOR



CONTACT US

BRIAN FOSTER
Managing Director
1 415 451 2437
brian.foster@cushwake.com
LIC #01393059

TREVOR BUCK
Executive Director
1 415 451 2436
trevor.buck@cushwake.com
LIC #01255462

WHY 475 COLOMA STREET



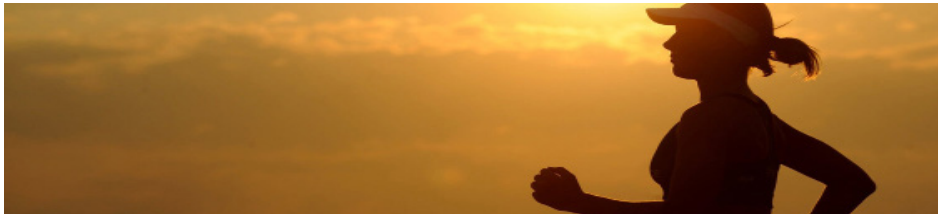
COMMUTING OPTIONS

FERRY STATION 1 BLOCK AWAY & BUS STOP DIRECTLY IN FRONT OF BUILDING



LUNCH & DINNER OPTIONS

OVER 15 RESTAURANTS WITHIN A 1 MILE RADIUS



HEALTH & MIND

EASY WALK TO 2 FITNESS GYMS, HIKING & BIKING TRAILS

CONTACT US

BRIAN FOSTER
Managing Director
1 415 451 2437
brian.foster@cushwake.com
LIC #01393059

TREVOR BUCK
Executive Director
1 415 451 2436
trevor.buck@cushwake.com
LIC #01255462



WHY SAUSALITO

475 COLOMA STREET SAUSALITO, CA

CREATIVE OFFICE SPACE FOR LEASE

Convenient access to food, exercise, city hall and the other amenities of downtown. Class A building with extensive amenities like conference room with free wifi, covered parking, electric car charging, on-site showers. Quality interior suites with high ceilings, large windows and great outlooks over the Northern Marin hillsides.