

FOR LEASE

128 Columbia Turnpike

Florham Park, NJ





READY FOR
IMMEDIATE OCCUPANCY



PROPERTY FEATURES

- + **Availability:** 5,132 sq. ft. divisible to 1,500 sq. ft.
- + **Co-Tenants:** Kiddie Academy, Center for Dermatology, Zelfman Orthodontics
- + **Parking:** 103 Surface Spaces (5.00/1,000)
- + **Traffic Counts:** 19,819 AADT
- + **Zoning:** PB-2
- + **Lease Rate:** Call for quote
- + **Additional Information:**
 - Premier Medical Office Building constructed in 2012
 - Easily accessible from Routes 10, 24 and I-287
 - Close proximity to Morristown Memorial Hospital, St. Barnabas Medical Center, Overlook Hospital and Summit Medical

2018 Estimated Demographics

	1 Mile	3 Miles	5 Miles
 Population	5,556	47,933	147,356
 Households	2,135	16,728	52,993
 Median Household Income	\$128,758	\$132,363	\$137,925
 Daytime Population	10,823	58,030	141,294

Owned & Managed by:



FOR LEASE

128 Columbia Turnpike

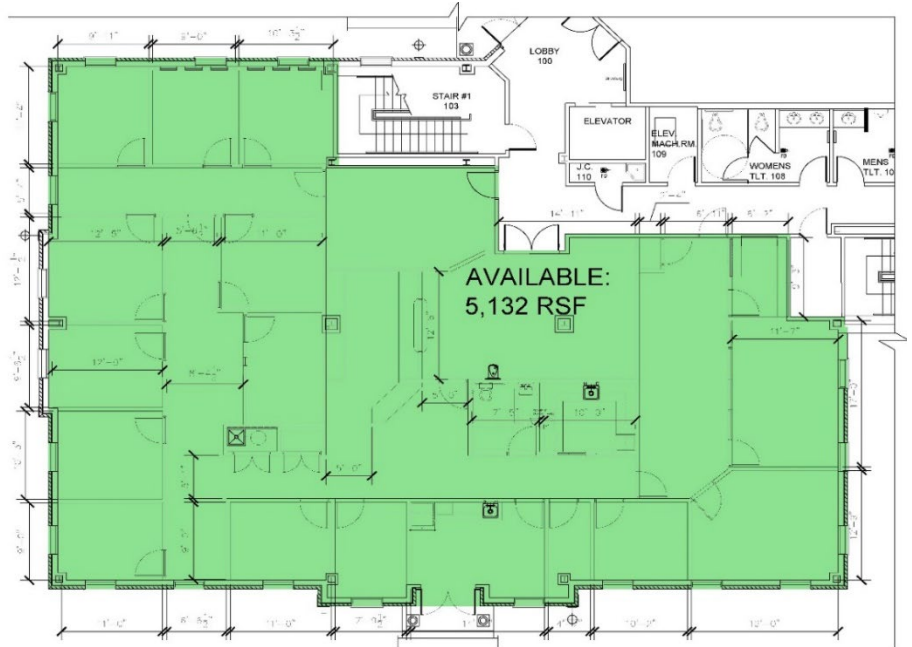
Florham Park, NJ



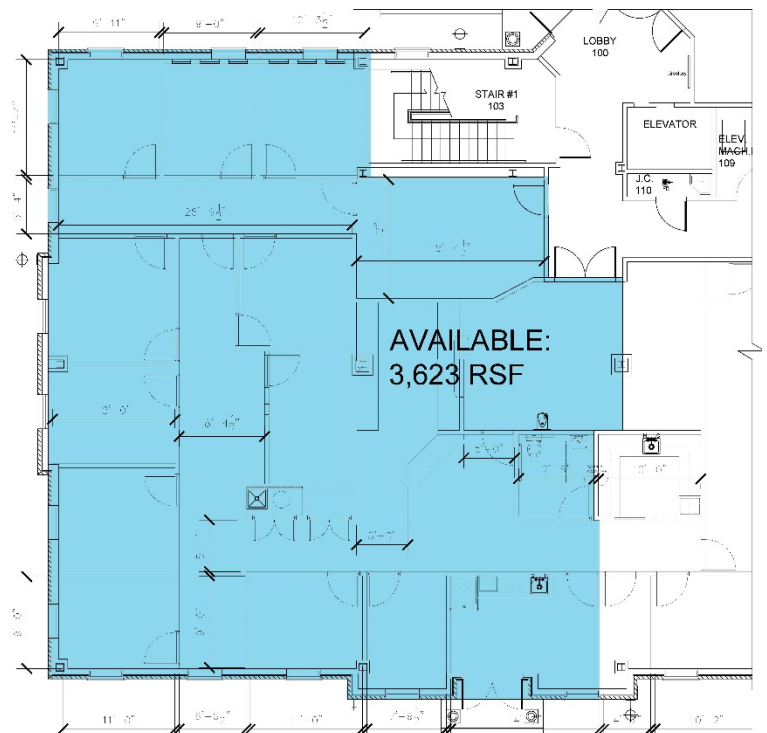
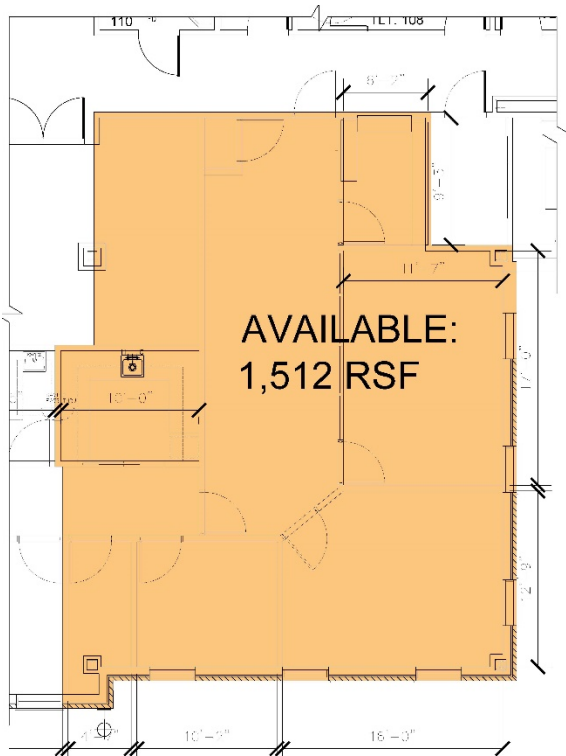
SPACE LAYOUT

- + Seven exam rooms, each come equipped with a sink
- + Safety shower
- + Kitchenette / Break Room
- + Two reception areas
- + ADA Bathroom

Floor Plan



Potential Divisions



FOR LEASE

128 Columbia Turnpike

Florham Park, NJ



MARKET AERIAL



NEIGHBORING TENANTS



© 2018 CBRE, Inc. All rights reserved. This information has been obtained from sources believed reliable, but has not been verified for accuracy or completeness. You should conduct a careful, independent investigation of the property and verify all information. Any reliance on this information is solely at your own risk. CBRE and the CBRE logo are service marks of CBRE, Inc. All other marks displayed on this document are the property of their respective owners. Photos herein are the property of their respective owners. Use of these images without the express written consent of the owner is prohibited.

FOR LEASE

128 Columbia Turnpike

Florham Park, NJ



PERMITTED USES

The permitted uses in zones PB-1, PB-2 are as follows:

1. Office buildings for business, professional and administrative offices not engaged in retail or wholesale sale and delivery of goods nor the repairing, servicing or receiving of service on the premises.
2. Funeral homes
3. Municipal facilities or uses
4. Single-family dwellings as permitted in the R-15 Zone
5. Medical and dental offices

Conditional uses in these zones PB-1, PB-2 are as follows:

1. Banks or other financial institutions.

CONTACT US

Sam Bernhaut

First Vice President
+1 201 712 5884
samuel.bernhaut@cbre.com

Nicole Nannola

Associate
+1 201 712 5821
nicole.nannola@cbre.com

© 2018 CBRE, Inc. All rights reserved. This information has been obtained from sources believed reliable, but has not been verified for accuracy or completeness. You should conduct a careful, independent investigation of the property and verify all information. Any reliance on this information is solely at your own risk. CBRE and the CBRE logo are service marks of CBRE, Inc. All other marks displayed on this document are the property of their respective owners. Photos herein are the property of their respective owners. Use of these images without the express written consent of the owner is prohibited.

