



1223 N. MILWAUKEE AVE.

CHICAGO, IL 60642

**HIGH
DAYTIME &
NIGHTTIME
FOOT
TRAFFIC!**

YOUR BUSINESS HERE
↓



FOR RENT | RETAIL & OFFICE

RETAIL AND OFFICE SPACE AVAILABLE AT THE PRIME INTERSECTION OF ASHLAND, DIVISION, AND MILWAUKEE. GREAT VISIBILITY AND WALKING TRAFFIC PAST STOREFRONT.

- SPACE AVAILABLE |** 1,400 SF 1ST FLOOR RETAIL SPACE
2 - 181 SF SECOND FLOOR OFFICES
- ANNUAL NET RENT* |** \$23.50 / SF / YR NNN
\$500 / MONTH EACH FOR OFFICE SPACES
- CAM & TAX |** \$5.50 / SF
- POPULATION |** 230,000+ WITHIN 2 MILE
- AVERAGE HH INCOME |** \$117,000 WITHIN 2 MILE
- TRAFFIC |** 20,000+ VEHICLES PER DAY
- WALK SCORE |** 98

*Available space only.



NEARBY



CONTACT

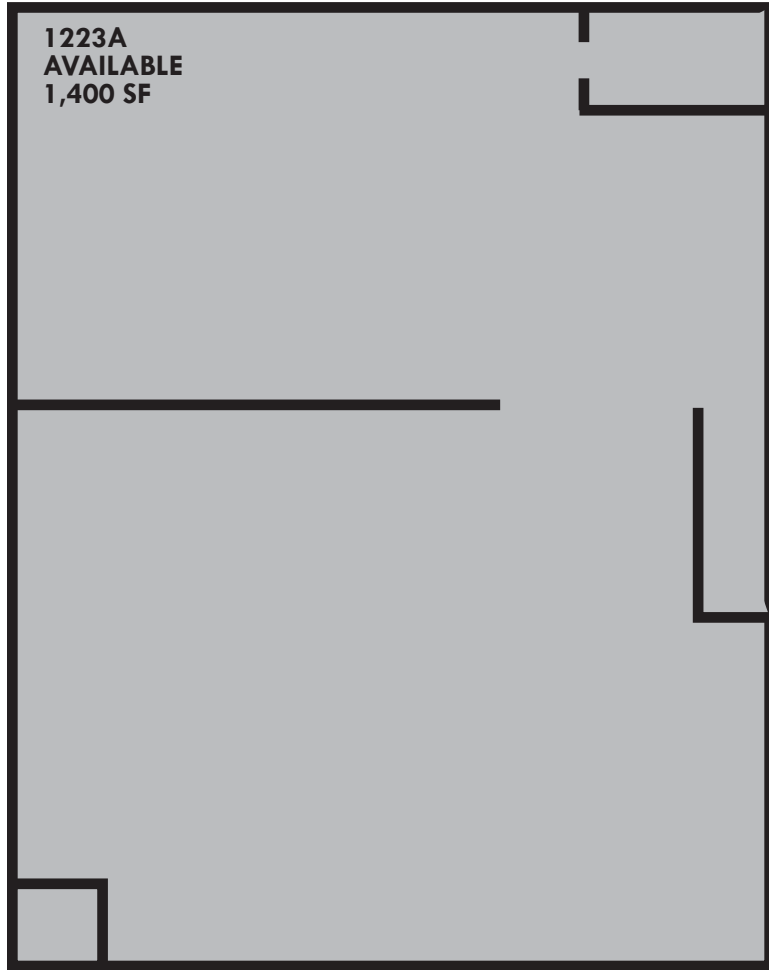
TERRI COX
312-337-1001 ext. 2028
tcox@matanky.com

SCOTT LEVINSON
312-337-1001 ext. 2022
slevinson@matanky.com

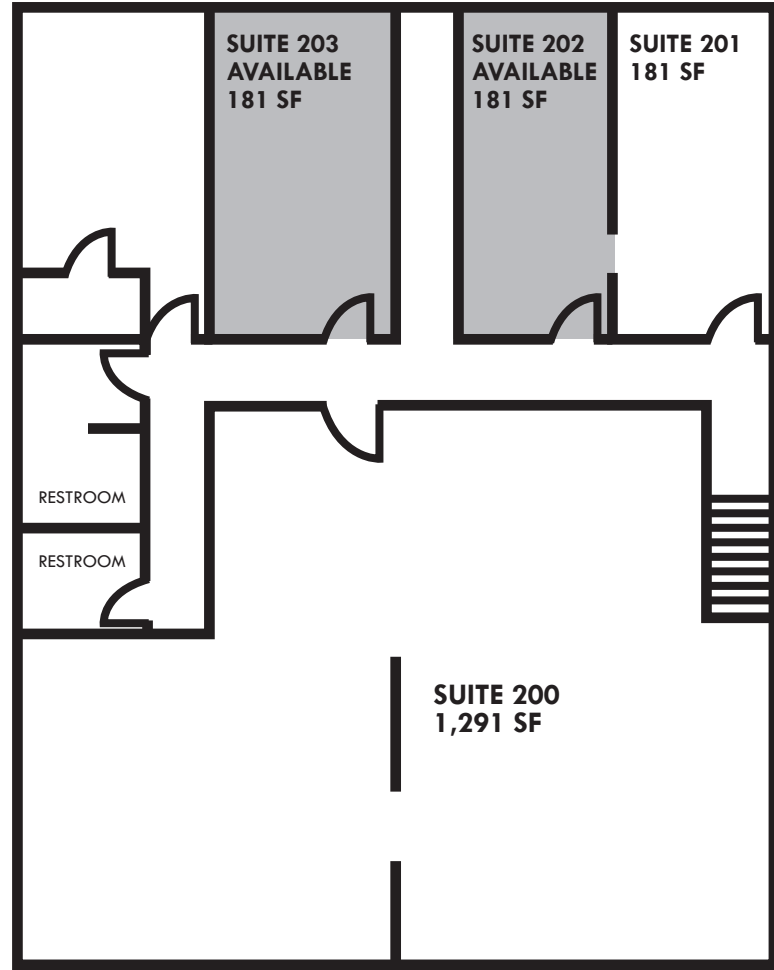
1223 N. MILWAUKEE AVE.

CHICAGO, ILLINOIS 60642

FIRST FLOOR



SECOND FLOOR



SITE PLAN

AERIAL



MAP



312-337-1001



TERRI COX

JOIN US ON:



WWW.MATANKY.COM



MATANKY REALTY GROUP