

PRICE REDUCED



SALE PRICE: \$650,000 | 6,600 SF BUILDING

DEMOGRAPHICS

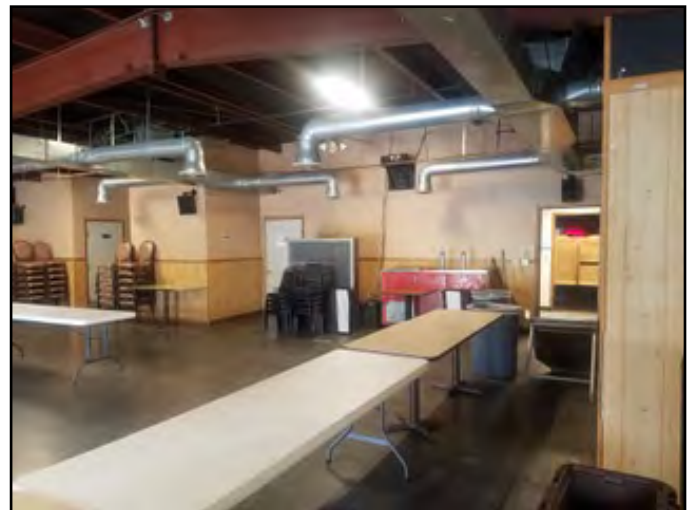
	1 mile	3 miles	5 miles
Estimated Population	9,208	59,155	80,369
Avg. Household Income	\$59,143	\$60,792	\$63,885

- Profitable business since 2013
- Business and real estate including all F, F, and E
- Banquet room
- One block off Belt Highway
- Turn key transaction
- \$700,000+ in gross sales

 [CLICK HERE TO VIEW MORE LISTING INFORMATION](#)

For More Information Contact: *Exclusive Agents*
 BILL MAAS, CCIM | 816.412.7392 | bmaas@blockandco.com
 PHIL PECK, CCIM | 816.412.7364 | ppeck@blockandco.com

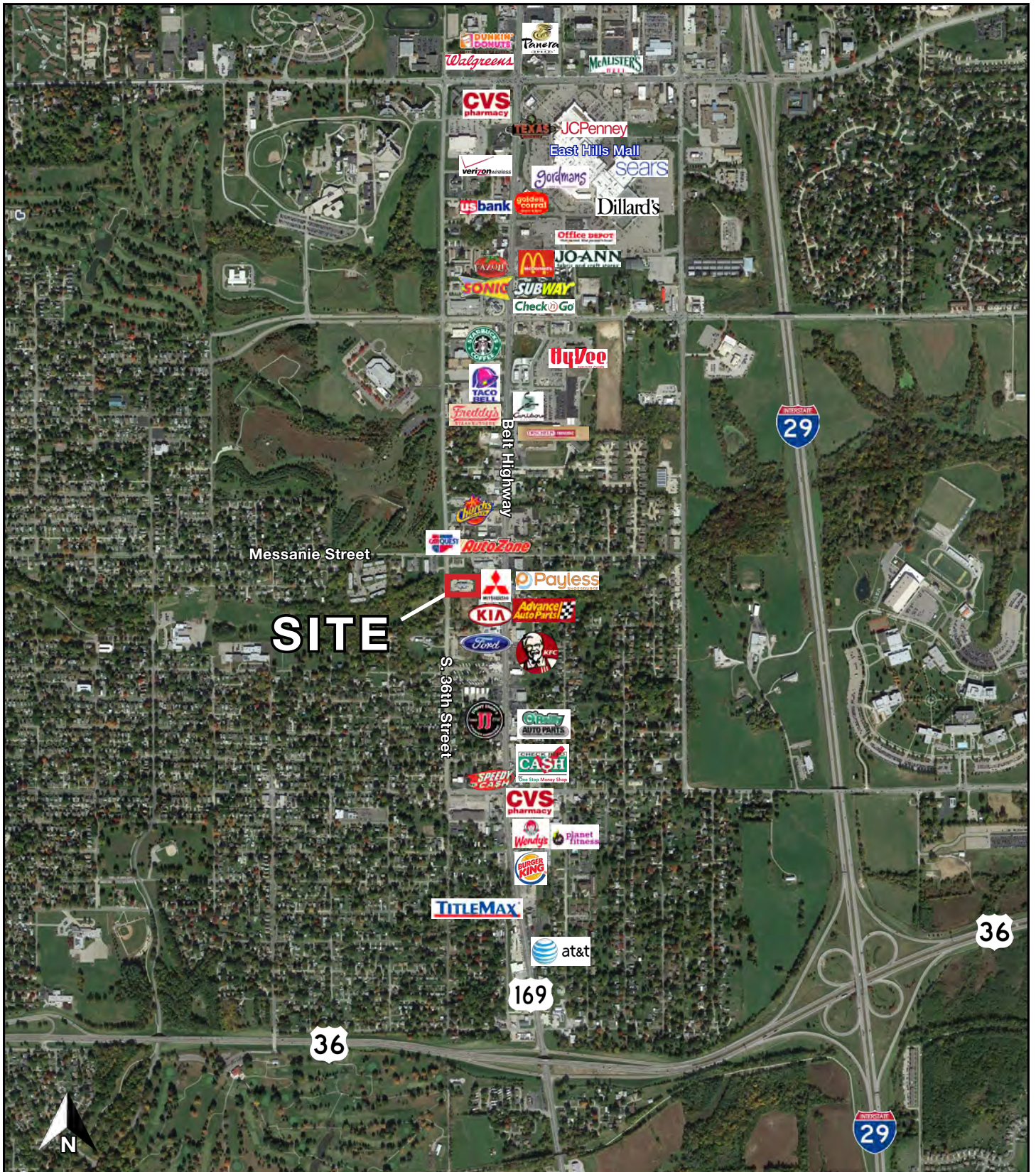
PHOTOS

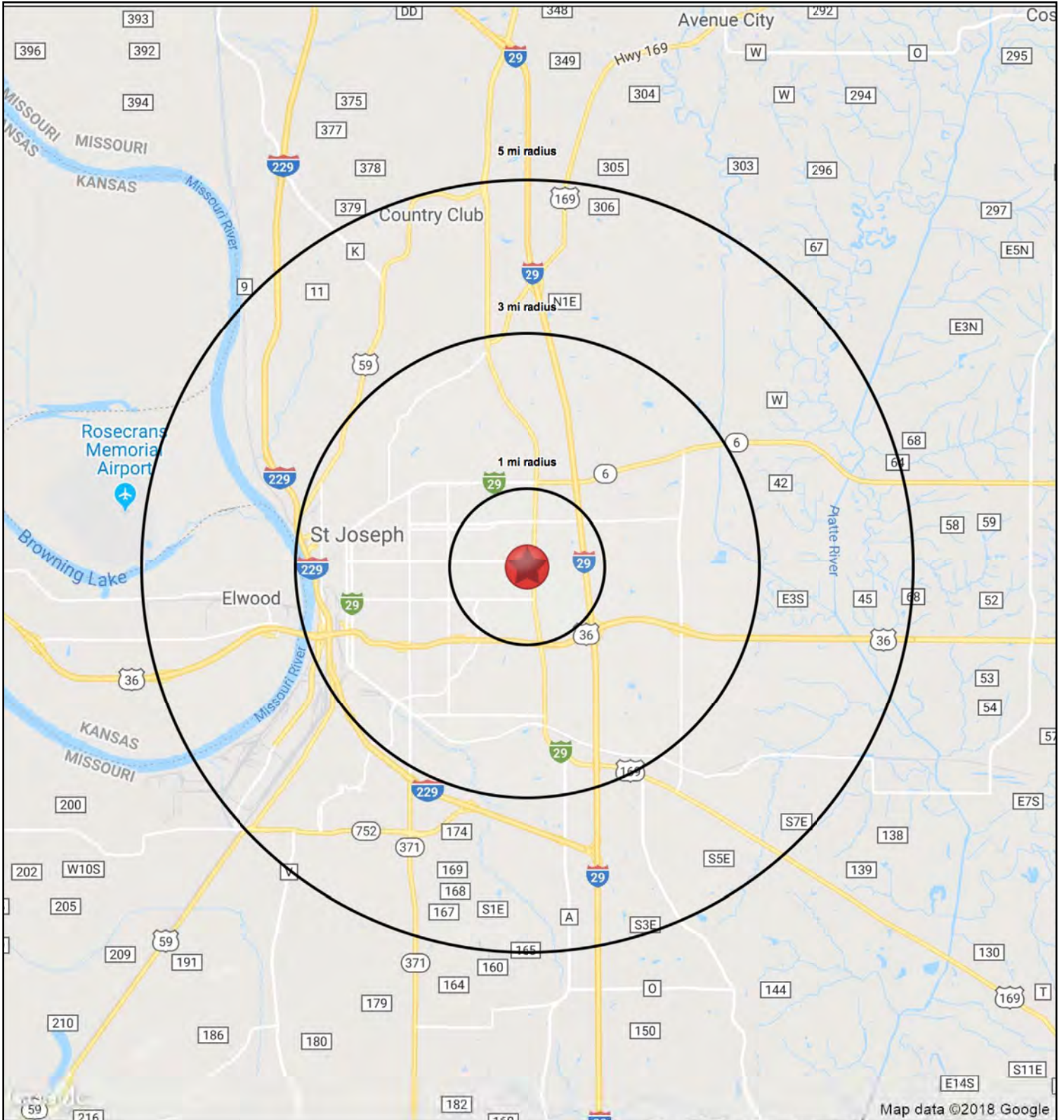


AERIAL



AERIAL







POPULAR SPORTS BAR & GRILL

621 S. 36th Street, Saint Joseph, MO

**FOR
SALE**

621 S. 36th Street		1 mi radius	3 mi radius	5 mi radius
St Joseph, MO 64507				
POPULATION	2018 Estimated Population	9,208	59,155	80,369
	2023 Projected Population	8,952	58,631	79,524
	2010 Census Population	9,386	59,199	80,619
	2000 Census Population	9,295	56,902	77,705
	Projected Annual Growth 2018 to 2023	-0.6%	-0.2%	-0.2%
	Historical Annual Growth 2000 to 2018	-0.1%	0.2%	0.2%
	2018 Median Age	33.1	36	36.6
HOUSEHOLDS	2018 Estimated Households	3,184	24,004	32,537
	2023 Projected Households	3,154	24,372	32,930
	2010 Census Households	3,091	22,956	31,220
	2000 Census Households	3,159	22,333	30,381
	Projected Annual Growth 2018 to 2023	-0.2%	0.3%	0.2%
	Historical Annual Growth 2000 to 2018	-	0.4%	0.4%
RACE AND ETHNICITY	2018 Estimated White	83.6%	83.0%	84.8%
	2018 Estimated Black or African American	10.1%	8.0%	6.8%
	2018 Estimated Asian or Pacific Islander	1.2%	2.3%	2.1%
	2018 Estimated American Indian or Native Alaskan	0.5%	0.5%	0.5%
	2018 Estimated Other Races	4.6%	6.2%	5.9%
	2018 Estimated Hispanic	5.7%	7.5%	7.3%
INCOME	2018 Estimated Average Household Income	\$59,143	\$60,792	\$63,885
	2018 Estimated Median Household Income	\$49,969	\$50,349	\$52,412
	2018 Estimated Per Capita Income	\$23,134	\$25,397	\$26,408
EDUCATION (AGE 25+)	2018 Estimated Elementary (Grade Level 0 to 8)	3.4%	4.1%	4.0%
	2018 Estimated Some High School (Grade Level 9 to 11)	8.4%	8.8%	8.2%
	2018 Estimated High School Graduate	39.3%	34.8%	35.8%
	2018 Estimated Some College	26.4%	24.5%	24.2%
	2018 Estimated Associates Degree Only	4.4%	5.5%	5.9%
	2018 Estimated Bachelors Degree Only	13.5%	14.8%	14.5%
	2018 Estimated Graduate Degree	4.5%	7.6%	7.5%
BUSINESS	2018 Estimated Total Businesses	271	2,861	3,452
	2018 Estimated Total Employees	6,325	46,126	55,035
	2018 Estimated Employee Population per Business	23.4	16.1	15.9
	2018 Estimated Residential Population per Business	34.0	20.7	23.3

