

2090 ADAM CLAYTON POWELL JR BLVD

LOCATED STEPS OFF THE 125TH STREET CORRIDOR



APPROXIMATE SIZE:
1,411 sq. ft. - Ground Floor

FRONTAGE:
34'

ASKING RENT:
Upon request

COMMENTS:

- Currently vacant
- High traffic location
- Available for immediate possession
- Dense residential population
- Steps from the bustling 125th St retail corridor amongst many new developments
- Close to the 125th Street 2,3 subway at Lenox Ave with 4,989,981 annual riders

NEIGHBORS:



1/4 mile radius



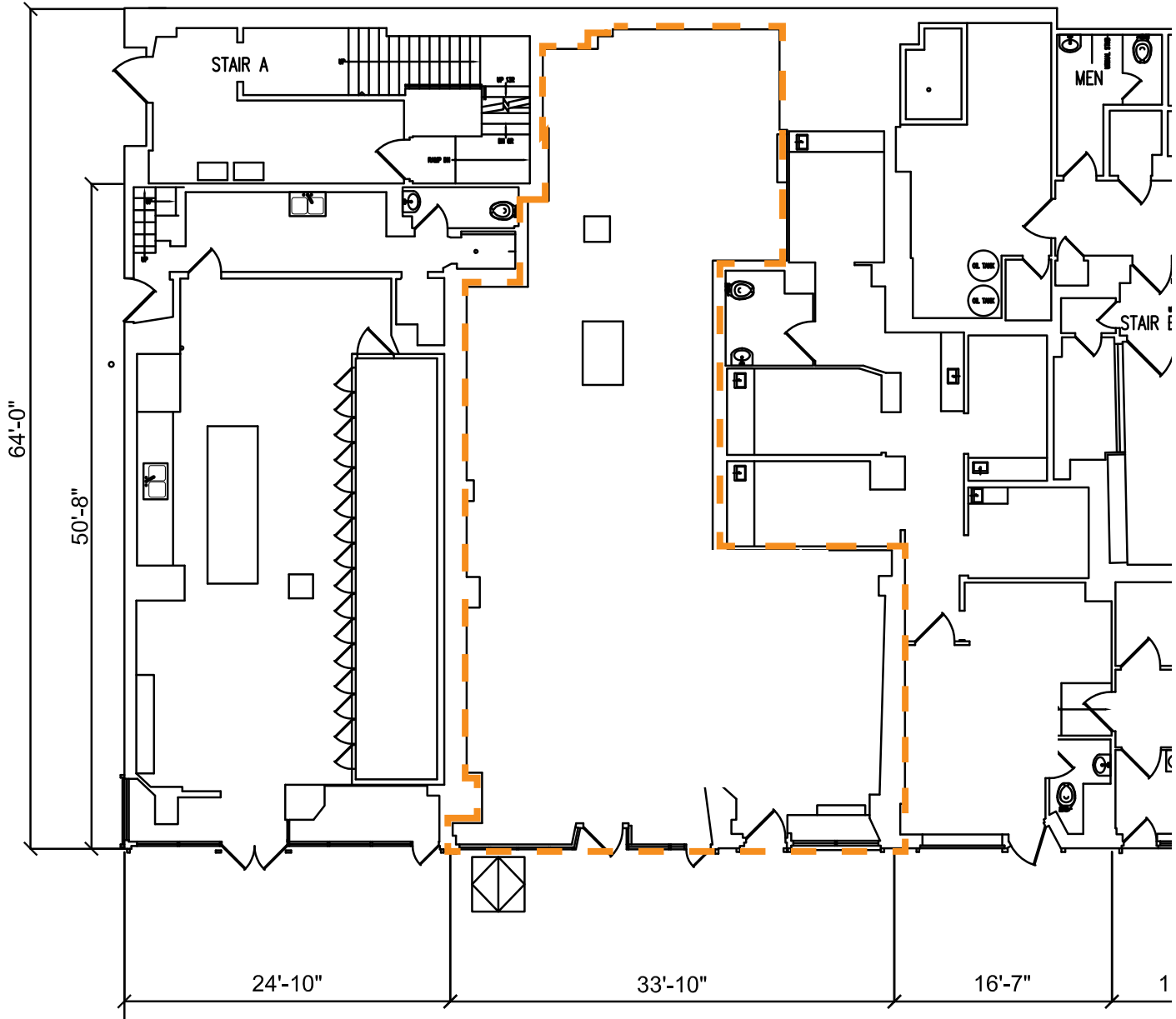
MASS TRANSPORTATION:

125th Street 2 3
4,989,981 annual riders

HARLEM RETAIL OPPORTUNITY

2090 ADAM CLAYTON POWELL BLVD

Located between 124th & 125th Streets



HARLEM RETAIL OPPORTUNITY

2090 ADAM CLAYTON POWELL BLVD

Located between 124th & 125th Streets



CONTACT EXCLUSIVE AGENTS

Cory G Zelnik
cory@zelnikco.com

Zelnik & Company LLC
ph: (212) 223-2200

Jason Turner
jason@zelnikco.com