



Washington BUSINESS PARK

FOR LEASE

PARKING

5330 E WASHINGTON ST

5328 E WASHINGTON ST

5326 E WASHINGTON ST

5324 E WASHINGTON ST

E Washington St

±139,169 SF total

Up to 92,000 SF
contiguous available

Close proximity to all major
and connecting freeways

Tenant incentives available

Various space options

Washington Business Park is a ±139,169 SF, 4-building office/industrial park with up to 92,000 SF available. Features include the lightrail, excellent freeway access, a central location between Downtown Phoenix, Scottsdale, and Arizona State University.

Features

Convenient on-site food truck options available daily provided by *Gourmetwheelsaz* food truck services

Space Options:

92,214 SF	Back office and A/C warehouse
34,600 SF	100% back office/call center
33,461 SF	Office and A/C warehouse
18,381 SF	Flex office divisible to 5,369 SF
10,214 SF	Flex office

Up to 92,000 SF contiguous

5,000 to 92,000 SF available

Prominent building signage

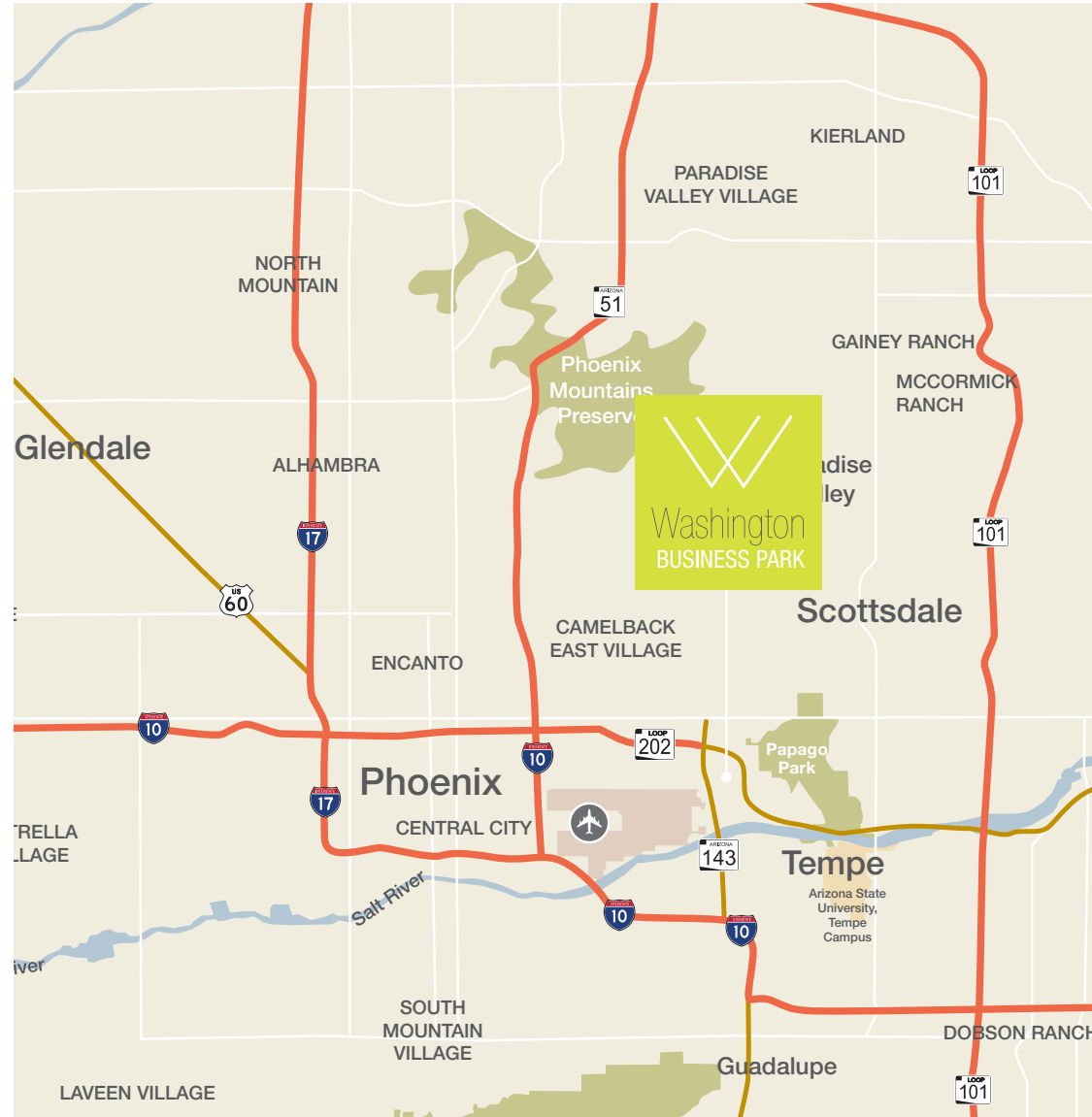
Adjacent to Metro Light Rail stop

Close proximity to all major and connecting freeways

Multiple loading options

Tenant incentives available

5:1,000 parking in 5330 building. Ideal for call center, creative or open office options



PROPERTY CONTACTS

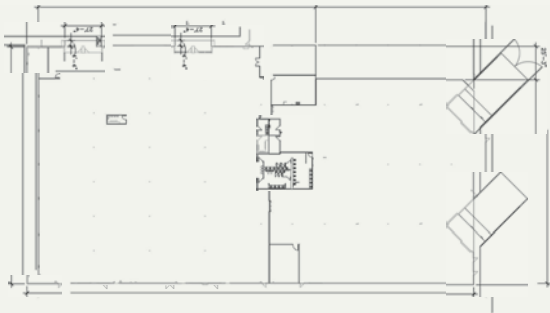
Mike Kasulaitis
602.513.5111
mikek@kiddermathews.com

Aric Adams
602.513.5119
aadams@kiddermathews.com

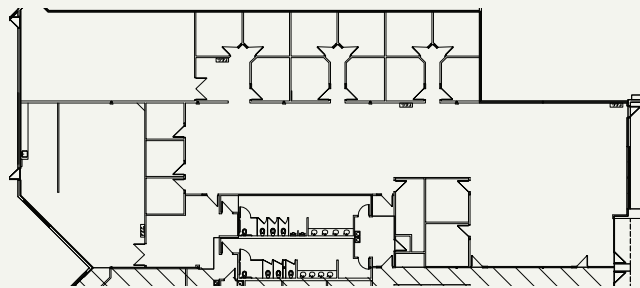




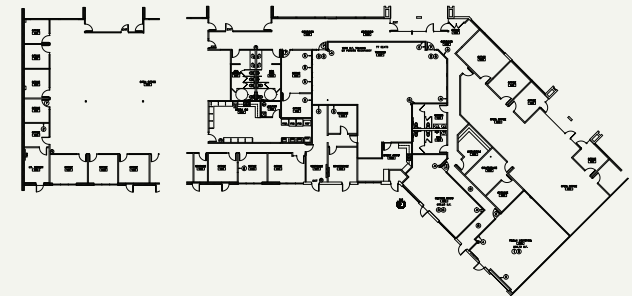
BLDG 5330 | SUITE 100 | 56,969 SF (DIVISIBLE)



BLDG 5330 | SUITE 104 | 10,214 SF



BLDG 5326 | 18,381 SF



PROPERTY CONTACTS

Mike Kasulaitis
602.513.5111
mikek@kiddermathews.com

Aric Adams
602.513.5119
aadams@kiddermathews.com





PROPERTY CONTACTS

Mike Kasulaitis
602.513.5111
mikek@kiddermathews.com

Aric Adams
602.513.5119
aadams@kiddermathews.com

