

For Sale

Vacant Land

Retail/Office Opportunity

5100 N Port Washington Rd Glendale, WI

Property Features

- Rare development opportunity in the desirable North Shore trade area
- I-43 visibility
- Just south of Bayshore Town Center, Starbucks, Jos. A. Bank, FedEx, Men's Warehouse, Panera and Kopp's Frozen Custard

Lot Size	1.966 Acres
Parcel ID#	2038000002
2017 Taxes	\$33,136.99
Zoning	B-1 (Sub-Area A-1)
Traffic Counts	16,000 cpd on Port Washington Rd 110,000 cpd on I-43
Sale Price	\$1,285,000

Demographics

	1 Mile	3 Miles	5 Miles
Population	11,837	135,147	344,529
Households	5,065	52,715	136,895
Median HH Inc.	\$68,703	\$37,404	\$37,147
Employees	9,444	44,631	172,761

For more information

Bruce Westling
414 617 4405
bnw@mlgcommercial.com

757 North Broadway Street, Suite 700
Milwaukee, WI 53202
414 347 9400
mlgcommercial.com
Offices in Milwaukee and Madison, WI

Information shown herein was provided by the Seller/Lessor and/or other third parties and has not been verified by the broker unless otherwise indicated.

CERTIFIED SURVEY MAP NO. _____

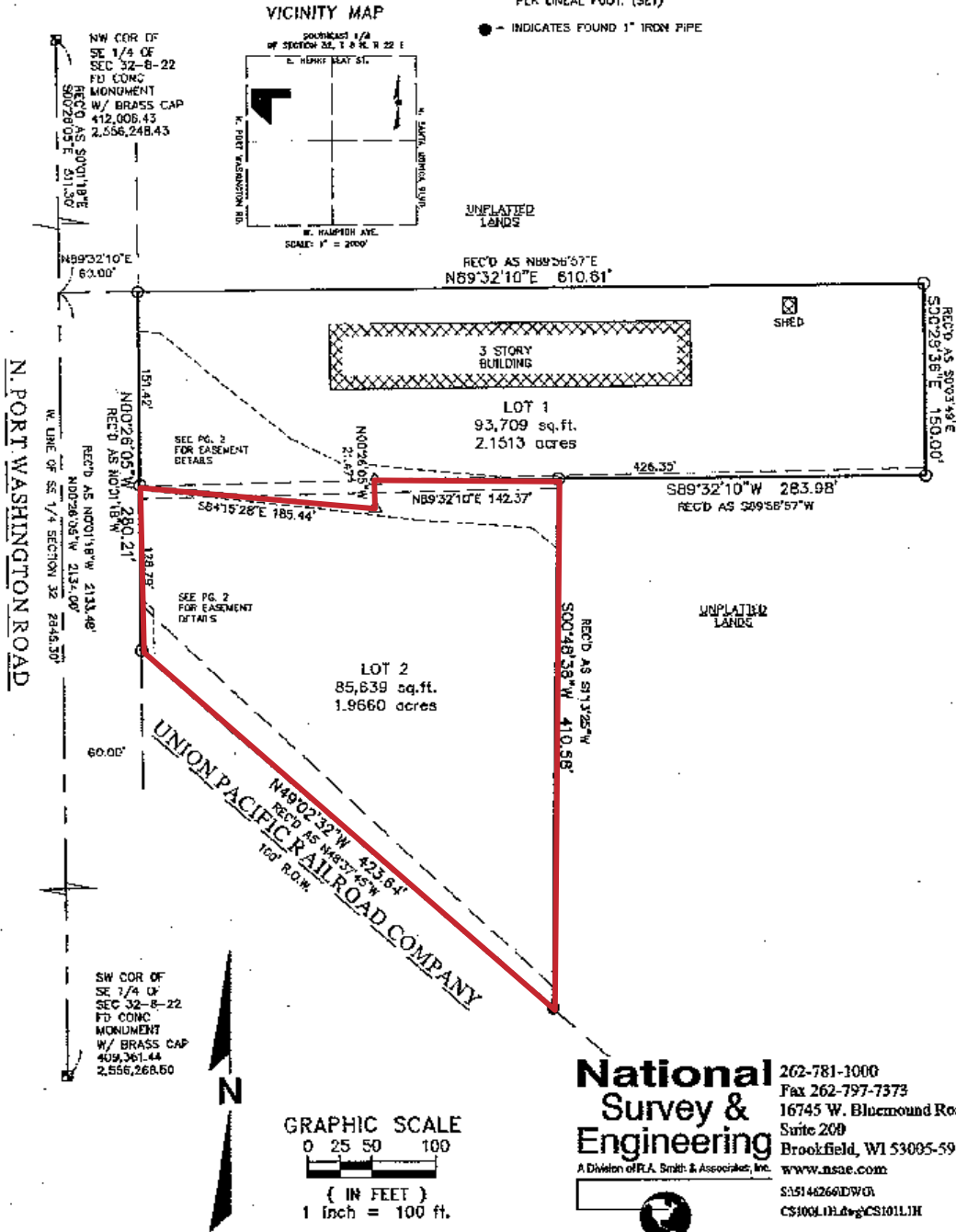
Vacant
Land

A redivision of Lot 1 of Certified Survey Map No. 3989, being a part of the Northwest Southeast 1/4 of Section 32, Town 8 North, Range 22 East, in the City of Glendale, Milwaukee County, Wisconsin.

ALL DIMENSIONS SHOWN ARE MEASURED TO THE NEAREST HUNDRETH OF A FOOT. ALL BEARINGS ARE REFERENCED TO THE WEST LINE OF THE SOUTHEAST 1/4 OF SECTION 32, TOWN 8 NORTH, RANGE 22 EAST, WHICH BEARS S00°28'05" E.

ZONED B-1, SPECIAL USE. SETBACKS ARE TO BE DETERMINED BY THE PLANNING COMMISSION.

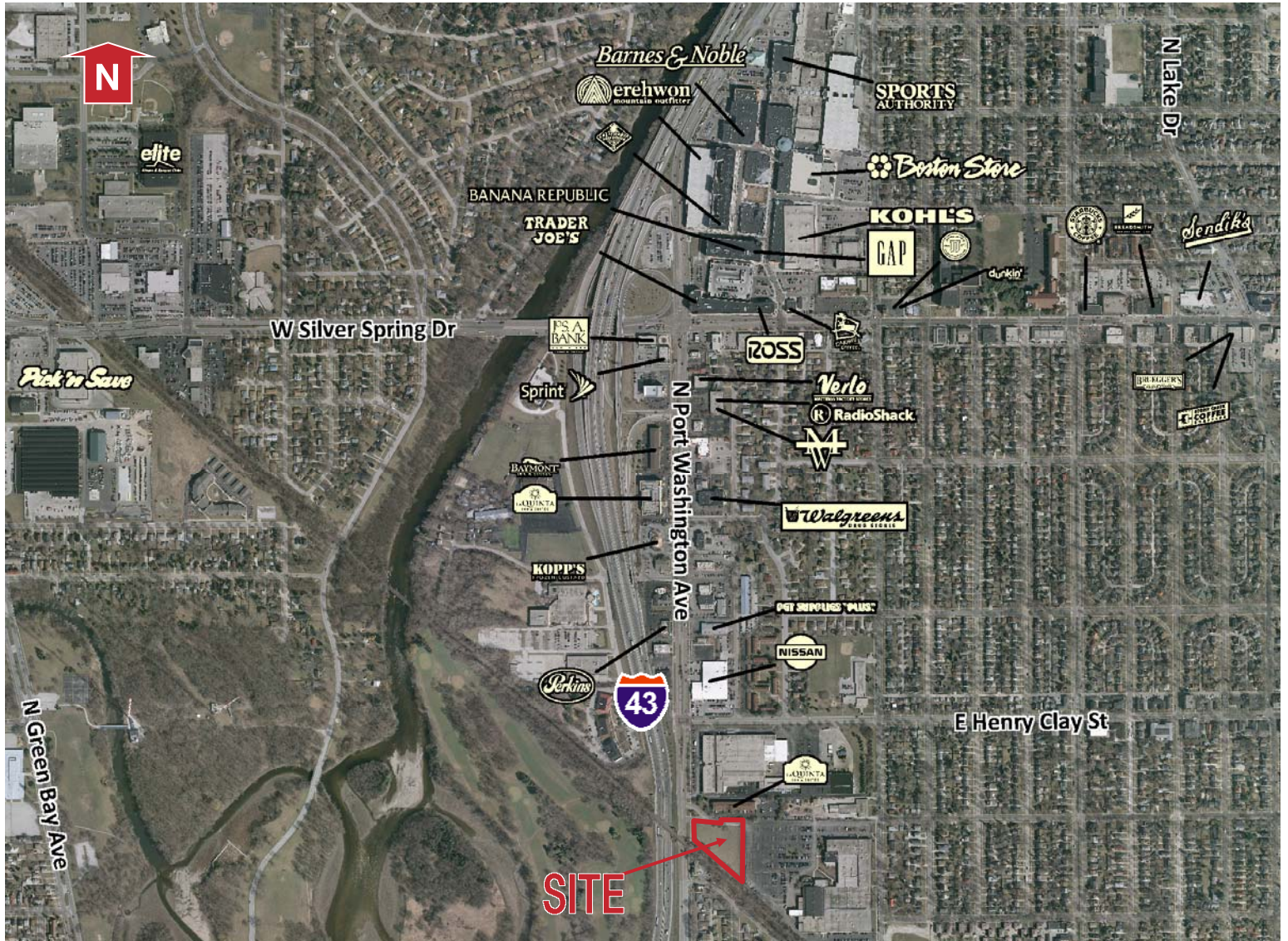
- △ - INDICATES SET PK NAIL
- - INDICATES 1.315" O.D. IRON PIPE, 18" IN LENGTH, 1.68 LBS. PER LINEAL FOOT. (SET)
- - INDICATES FOUND 1" IRON PIPE



National Survey & Engineering
A Division of R.A. Smith & Associates, Inc.
262-781-1000
Fax 262-797-7373
16745 W. Bluemound Road
Suite 200
Brookfield, WI 53005-5938
www.nsae.com
SAS14266DWCA
CS1001.DL.AvgCS1011.H

SHEET 1 OF 4 SHEETS

Vacant Land



State of Wisconsin Broker Disclosure to Non-Residential Customers

Prior to negotiating on your behalf the brokerage firm, or an agent associated with the firm, must provide you the following disclosure statement.

BROKER DISCLOSURE TO CUSTOMERS

You are the customer of the brokerage firm (hereinafter Firm). The Firm is either an agent of another party in the transaction or a subagent of another firm that is the agent of another party in the transaction. A broker or a salesperson acting on behalf of the Firm, may provide brokerage services to you. Whenever the Firm is providing brokerage services to you, the Firm and its brokers and salespersons (hereinafter Agents) owe you, the customer, the following duties:

- The duty to provide brokerage services to you fairly and honestly.
- The duty to exercise reasonable skill and care in providing brokerage services to you.
- The duty to provide you with accurate information about market conditions within a reasonable time if you request it, unless disclosure of the information is prohibited by law.
- The duty to disclose to you in writing certain Material Adverse Facts about a property, unless disclosure of the information is prohibited by law (see "Definition of Material Adverse Facts" below).
- The duty to protect your confidentiality. Unless the law requires it, the Firm and its Agents will not disclose your confidential information or the confidential information of other parties (see "Confidentiality Notice To Customers" below).
- The duty to safeguard trust funds and other property held by the Firm or its Agents.
- The duty, when negotiating, to present contract proposals in an objective and unbiased manner and disclose the advantages and disadvantages of the proposals.

Please review this information carefully. An agent of the Firm can answer your questions about brokerage services, but if you need legal advice, tax advice, or a professional property inspection, contact an attorney, tax advisor, or property inspector.

This disclosure is required by section 452.135 of the Wisconsin statutes and is for information only. It is a plain-language summary of a broker's duties to a customer under section 452.133 (1) of the Wisconsin statutes.

CONFIDENTIALITY NOTICE TO CUSTOMERS

The Firm and its Agents will keep confidential any information given to the Firm or its Agents in confidence, or any information obtained by the Firm or its Agents that a reasonable person would want to be kept confidential, unless the information must be disclosed by law or you authorize the Firm to disclose particular information. The Firm and its

Wisconsin law requires all real estate licensees to give the following information about brokerage services to prospective customers.

Agents shall continue to keep the information confidential after the Firm is no longer providing brokerage services to you.

The following information is required to be disclosed by law:

1. Material Adverse Facts, as defined in section 452.01 (5g) of the Wisconsin statutes (see "definition of material adverse facts" below).
2. Any facts known by the Firm or its Agents that contradict any information included in a written inspection report on the property or real estate that is the subject of the transaction. To ensure that the Firm and its Agents is aware of what specific information you consider confidential, you may list that information below or provide that information to the Firm or its Agents by other means. At a later time, you may also provide the Firm or its Agents with other information that you consider to be confidential.

CONFIDENTIAL INFORMATION: _____

NON-CONFIDENTIAL INFORMATION (The following information may be disclosed by the Firm and its Agents): __

(INSERT INFORMATION YOU AUTHORIZE TO BE DISCLOSED SUCH AS FINANCIAL QUALIFICATION INFORMATION)

SEX OFFENDER REGISTRY

Notice: You may obtain information about the sex offender registry and persons registered with the registry by contacting the Wisconsin Department of Corrections on the Internet at <http://www.doc.wi.gov/> or by phone at 608-240-5830.

DEFINITION OF MATERIAL ADVERSE FACTS

A "Material Adverse Fact" is defined in Wis. Stat. 452.01 (5g) as an adverse fact that a party indicates is of such significance, or that is generally recognized by a competent licensee as being of such significance to a reasonable party, that it affects or would affect the party's decision to enter into a contract or agreement concerning a transaction or affects or would affect the party's decision about the terms of such a contract or agreement.

An "Adverse Fact" is defined in Wis. Stat. 452.01 (1e) as a condition or occurrence that a competent licensee generally recognizes will significantly and adversely affect the value of the property, significantly reduce the structural integrity of improvements to real estate, or present a significant health risk to occupants of the property; or information that indicates that a party to a transaction is not able to or does not intend to meet his or her obligations under a contract or agreement made concerning the transaction.

No representation is made as to the legal validity of any provision or the adequacy of any provision on any specific transaction