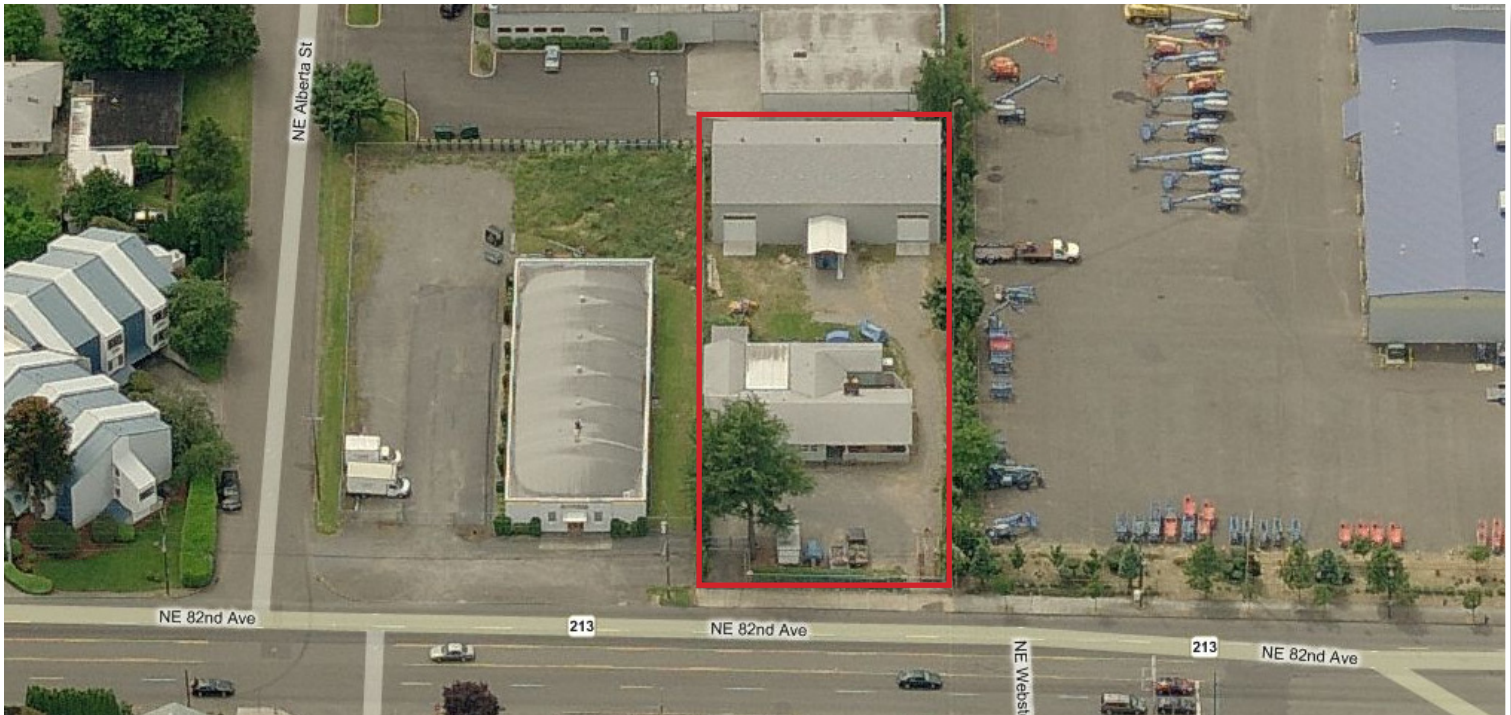


For Sale

Warehouse Plus Home/Office on ½ Acre

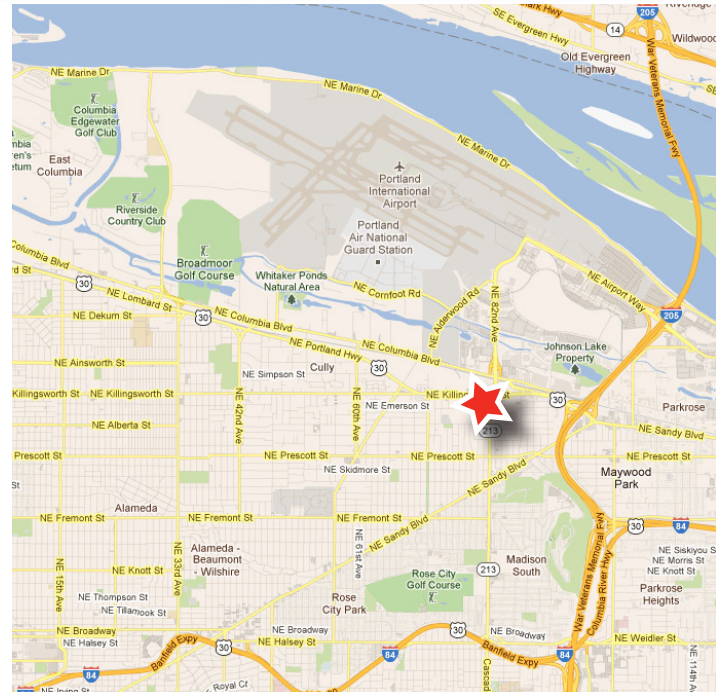
5025 NE 82nd Avenue Portland, Oregon 97220



IMPROVEMENTS	Warehouse: ±4,032 sf with ±400 sf office. Concrete block building built in 2007. Demised into ±2,600 SF and ±1,400 sf. Home: ±1,853 SF with ±1,322 SF basement and ±540 sf attached garage. Ranch style built in 1951.
SITE SIZE	±0.52 Acres
ZONING	General Industrial 2 (IG2)
LOADING	Two 12' W X 14' T Grade Level Doors
POWER	3-Phase Electrical Service
CLEAR HEIGHT	18'6"
PROPERTY TAXES	\$5,594.41 (2012)
SALE PRICE	\$640,000

SPACE FEATURES

- Dual gated entrance
- Full perimeter fence with razor wire
- Paved front drive with graveled rear lot
- Close Proximity to PDX Airport and I-205 Freeway



FOR MORE INFORMATION, PLEASE CONTACT:

AARON WATT

Associate Director

(503) 279-1779

Aaron.Watt@cushwake.com

CUSHMAN & WAKEFIELD OF OREGON, INC

200 SW Market Street, Suite 200

Portland, OR 97201

(503) 279-1700

www.cushmanwakefield.com

The depiction in the included photograph of any person, entity, sign, logo or property, other than Cushman & Wakefield's (C&W) client and the property offered by C&W, is incidental only, and is not intended to connote any affiliation, connection, association, sponsorship or approval by or between that which is incidentally depicted and C&W or its client. This listing shall not be deemed an offer to lease, sublease or sell such property; and, in the event of any transaction for such property, no commission shall be earned by or payable to any cooperating broker except if otherwise provided pursuant to the express terms, rates and conditions of C&W's agreement with its principal, if, as and when such commission (if any) is actually received from such principal. (A copy of the rates and conditions referred to above with respect to this property is available upon request.)

For Sale

Warehouse



Home/Office



AARON WATT
Associate Director
(503) 279-1779
Aaron.Watt@cushwake.com

CUSHMAN & WAKEFIELD OF OREGON, INC
200 SW Market Street, Suite 200
Portland, OR 97201
(503) 279-1700
www.cushmanwakefield.com

