

Markham Place

340 N Main St, Plymouth, MI 48170



Listing ID: 30215069
 Status: Active
 Property Type: Office For Lease
 (also listed as Retail-Commercial)
 Office Type: Office Building
 Contiguous Space: 158 - 3,251 SF
 Total Available: 3,409 SF
 Lease Rate: \$5,100 - 65,832 (Annual)
 Unit Price: \$20.25 - 32.28 PSF (Annual)
 Base Monthly Rent: \$425 - 5,486
 Lease Type: Modified Gross



Overview/Comments

- Historic Daisy Air Rifle Factory converted into loft style multi-tenancy office/ mixed use building
- Three floors with beautifully updated foyers, restrooms, and common areas, with exposed brick office suites, wood beams, and hardwood floors.
- One last office suite remaining (3,251 SF)
- Large adjoining parking for clients/customers.
- Highway access from M-14 and I-275 put this location within easy access to some of the most desirable communities in Michigan.
- Nearby and walkable to all of the amenities of Beautiful Downtown Plymouth
- Common Conference Room available for Tenant use

More Information Online

<https://cie.cpix.net//listing/30215069>



QR Code

Scan this image with your mobile device:

General Information

Tax ID/APN:	49005010362007	Class of Space:	Class C
Office Type:	Office Building	Gross Building Area:	24,028 SF
Zoning:	COMMERCIAL	Land Area:	2.13 Acres

Available Space

Suite/Unit Number:	100	Space Description:	Price is \$20.25 PSF, Plus \$1.25 PSF for ele.
Suite Floor/Level:	1st Floor	Space Type:	Relet
Space Available:	3,251 SF	Date Available:	07/19/2018
Minimum Divisible:	3,251 SF	Lease Rate:	\$20.25 PSF (Annual)
Maximum Contiguous:	3,251 SF	Lease Type:	Modified Gross

Available Space

Suite/Unit Number:	302	Space Type:	Relet
Space Available:	158 SF	Date Available:	11/24/2021
Minimum Divisible:	158 SF	Lease Rate:	\$425 (Monthly)
Maximum Contiguous:	158 SF	Lease Type:	Modified Gross

Building Related

Total Number of Buildings:	1	Passenger Elevators:	0
Year Built:	1886	Freight Elevators:	0
Parking Type:	Surface		

Location

Address: 340 N Main St, Plymouth, MI 48170
County: Wayne

MSA: Detroit-Warren-Dearborn
Submarket: Southern I-275 Corridor



Property Images



Exterior Photo 1



Exterior Photo 2



Interior Photo 4



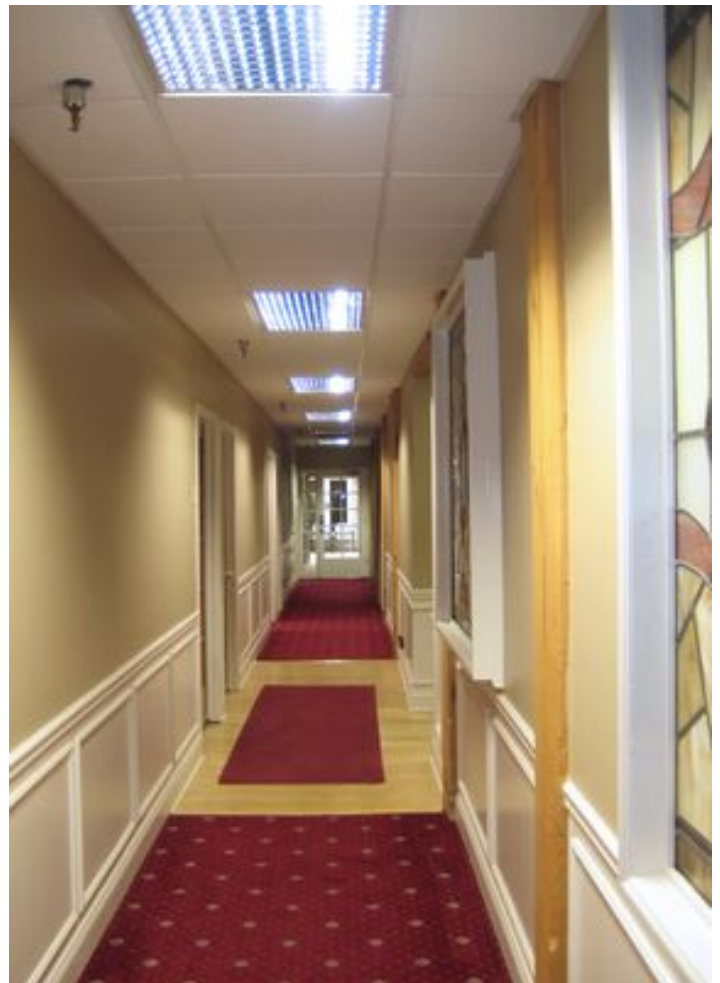
Interior Photo 2



Exterior Photo 4



Interior Photo 1



Interior Photo 3



Plat Map



Aerial

Property Contacts



Eric D. Banks

Dominion Real Estate Advisors
248-760-2525 [M]
248-399-9999 [O]
ebanks@dominionra.com



Sean Jamian

Dominion Real Estate Advisors
248-804-7758 [M]
248-399-9999 [O]
sjamian@dominionra.com