

The Shoppes at Wilton

ROUTE 50, SARATOGA SPRINGS, NEW YORK



Leasing Opportunity

960 SF AVAILABLE

Alison Burnside
518.785.8200 x3
aburnside@dartco.com



FACTS

- The Shoppes at Wilton consists of 150,000 SF of retail
- Located on Route 50 across from the Wilton Mall
- Co-tenants include Best Buy, Bed Bath & Beyond, TJ Maxx, TGI Friday's and Panera Bread
- 2 signalized entrances
- Over 2.5 million tourists visit Saratoga County per year
- Call broker for more details

DEMOGRAPHICS

	1 MILE	3 MILES	5 MILES
Population	3,720	28,300	46,115
Med HH Income	\$84,490	\$87,565	\$84,934
Households	1,699	13,430	21,988
Daytime Population	6,407	38,011	56,416

STORE FRONT



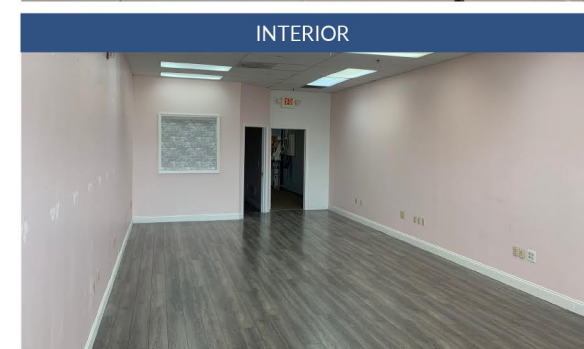
PYLON SIGNAGE



FORMER TENANT



INTERIOR



AREA GENERATORS

Target Distribution Center, AYCO, New York Racing Association, Saratoga Hospital, Skidmore College, Saratoga Gaming and Raceway, National Museum of Racing and Hall of Fame, Saratoga Performing Arts Center, Saratoga Spa State Park, Saratoga Winery and many more!

**AVAILABLE
IMMEDIATELY**



OVERALL AERIAL

SITE
THE SHOPPES AT WILTON



Mc's southwest grill
TJ-maxx
Pier 1 imports

Tanera
BEST BUY
BED BATH & BEYOND
EMS

Aaron's

Friendly's

Ninety Nine 99

Walmart
SUPERCENTERS

LOWE'S

ALDI
COMING
SOON

Aspen Dental
AT&T Wireless
CHIPOTLE
FIVE GUYS
BURGERS AND FRIES

OLD GICK RD

SARATOGA
MEDICAL ARTS

26,920 ADT '18
MARKET
REX

WILTON MALL
BON-TON
DICK'S
SPORTING
GOODS
JCPenney
BOW-TIE
CINEMAS
planet fitness
Healthy Living
MARKET & CAFE
ULTA
OLD NAVY
HomeGoods

Walgreens

HOME DEPOT

BARNES & NOBLE

Red Robin
GOURMET BURGERS AND BEERS

TARGET

ACMOORE
PETSMART

BJ's WHOLESALE
CLUB

McDonald's

LOUDEN RD

Hannaford

WEIBEL AVE

KOHL'S
TRACTOR
SUPPLY CO.

87

EXIT
15

50

50

50