



**CUSHMAN &  
WAKEFIELD**  
Commerce

FOR LEASE

**Ridgeview Office Building**  
4550 South Harrison Blvd / Ogden, Utah

CLASS A CONSTRUCTION



## Property Highlights

- Two spaces available for lease
  - Suite B: 3,514 SF
  - Suite C: 1,959 SF
- **Lease Rate: \$14.00 PSF/NNN**
- New Class A construction
- High density area
- Excellent location on Harrison Blvd



### Mark Swirbul

Associate  
+1 801 784 5315  
mswirbul@comre.com

372 24<sup>th</sup> Street, Suite 320  
Ogden, Utah 84401  
Main +1 801 525 3000  
Fax +1 801 525 9596  
**comre.com**

*Independently Owned and Operated / A Member of the Cushman & Wakefield Alliance*

Cushman & Wakefield Copyright 2015. No warranty or representation, express or implied, is made to the accuracy or completeness of the information contained herein, and same is submitted subject to errors, omissions, change of price, rental or other conditions, withdrawal without notice, and to any special listing conditions imposed by the property owner(s). As applicable, we make no representation as to the condition of the property (or properties) in question.  
(path: G:\1 - Projects\Ogden\Swirbul.Mark\1 - Flyers\4550sHarrisonBlvd)



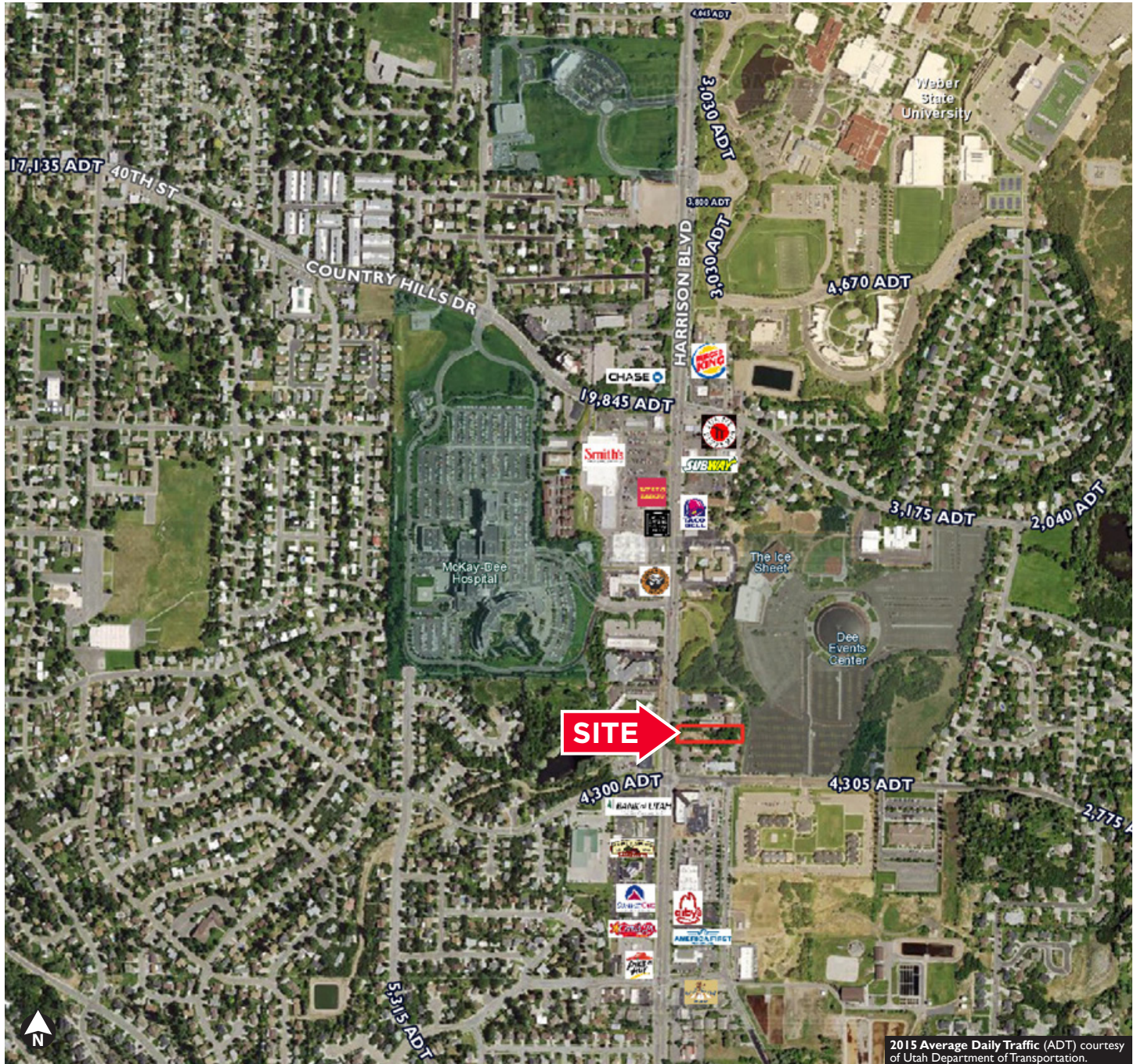
**CUSHMAN &  
WAKEFIELD**  
Commerce

FOR LEASE

# Ridgeview Office Building

4550 South Harrison Blvd / Ogden, Utah

## Aerial / Location Map



**Mark Swirbul**  
Associate  
+1 801 784 5315  
mswirbul@comre.com

372 24<sup>th</sup> Street, Suite 320  
Ogden, Utah 84401  
Main +1 801 525 3000  
Fax +1 801 525 9596  
**comre.com**

*Independently Owned and Operated / A Member of the Cushman & Wakefield Alliance*

Cushman & Wakefield Copyright 2015. No warranty or representation, express or implied, is made to the accuracy or completeness of the information contained herein, and same is submitted subject to errors, omissions, change of price, rental or other conditions, withdrawal without notice, and to any special listing conditions imposed by the property owner(s). As applicable, we make no representation as to the condition of the property (or properties) in question.  
(path: G:\1 - Projects\Ogden\Swirbul\_Mark\1 - Flyers\4550sHarrisonBlvd)