

155 Weldon Parkway  
Maryland Heights, MO 63043

**5,341 & 10,672 SF OFFICE / WAREHOUSE  
AVAILABLE FOR LEASE**



## **HUTKIN**

**DEVELOPMENT COMPANY**

10829 Olive Boulevard  
Suite 200  
St. Louis, MO 63141

Telephone 314.872.9140  
FAX 314.872.9001

Visit our website:  
[www.hutkin.com](http://www.hutkin.com)

### CONTACT

Bo Keefer  
[bkeefer@hutkin.com](mailto:bkeefer@hutkin.com)  
Direct 314.708.1258  
Cell 314.973.1242

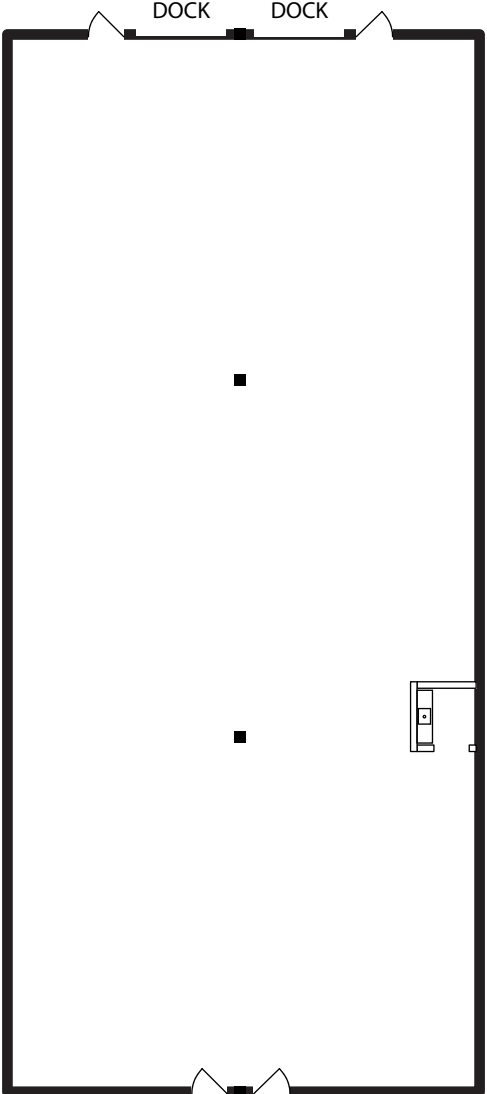
Tony Giarratano  
[tony@hutkin.com](mailto:tony@hutkin.com)  
Direct 314.708.4922  
Cell 314.276.2352

- **155 Weldon Parkway, Suite 107**
- 10,672 SF available
- 33% office finish with three loading docks
- **LEASE RATE: \$4.95 PSF NNN**
  
- **155 Weldon Parkway, Suites 110-113**
- 5,341 SF available
- 100% warehouse with two loading docks
- **LEASE RATE: \$4.75 PSF NNN**

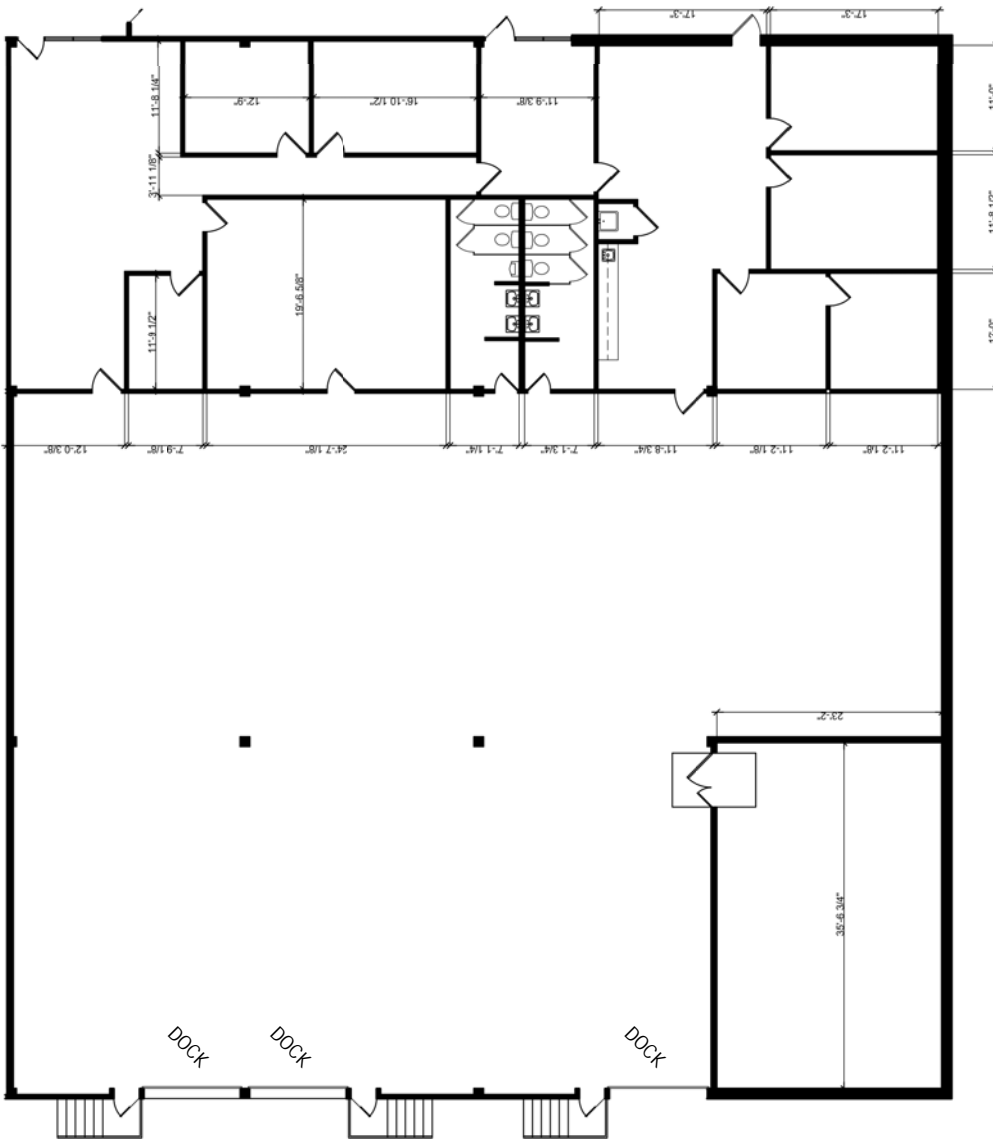
- 16' clear ceilings
- Recent improvements in common area
- Monument signage available facing Weldon Pkwy
- Within close proximity to Page Ave, Dorsett Road and I-270
- Located just minutes north of Westport Plaza amenities offering a variety of dining, entertainment and lodging venues

155 Weldon Parkway  
Maryland Heights, MO 63043

**5,341 & 10,672 SF OFFICE / WAREHOUSE  
AVAILABLE FOR LEASE**



155 WELDON PKWY, SUITE 110-113  
5,341 SF



155 WELDON PKWY, SUITE 107  
10,672 SF

155 Weldon Parkway  
Maryland Heights, MO 63043

5,341 & 10,672 SF OFFICE / WAREHOUSE  
AVAILABLE FOR LEASE

