



CENTRE PLAZA PREMIER DOWNTOWN OFFICE BUILDING

For more information, contact:

LEO F. JONES
Associate Real Estate Broker
+1 607 754 5990 Ext 317
Ljones@pyramidbrokerage.com

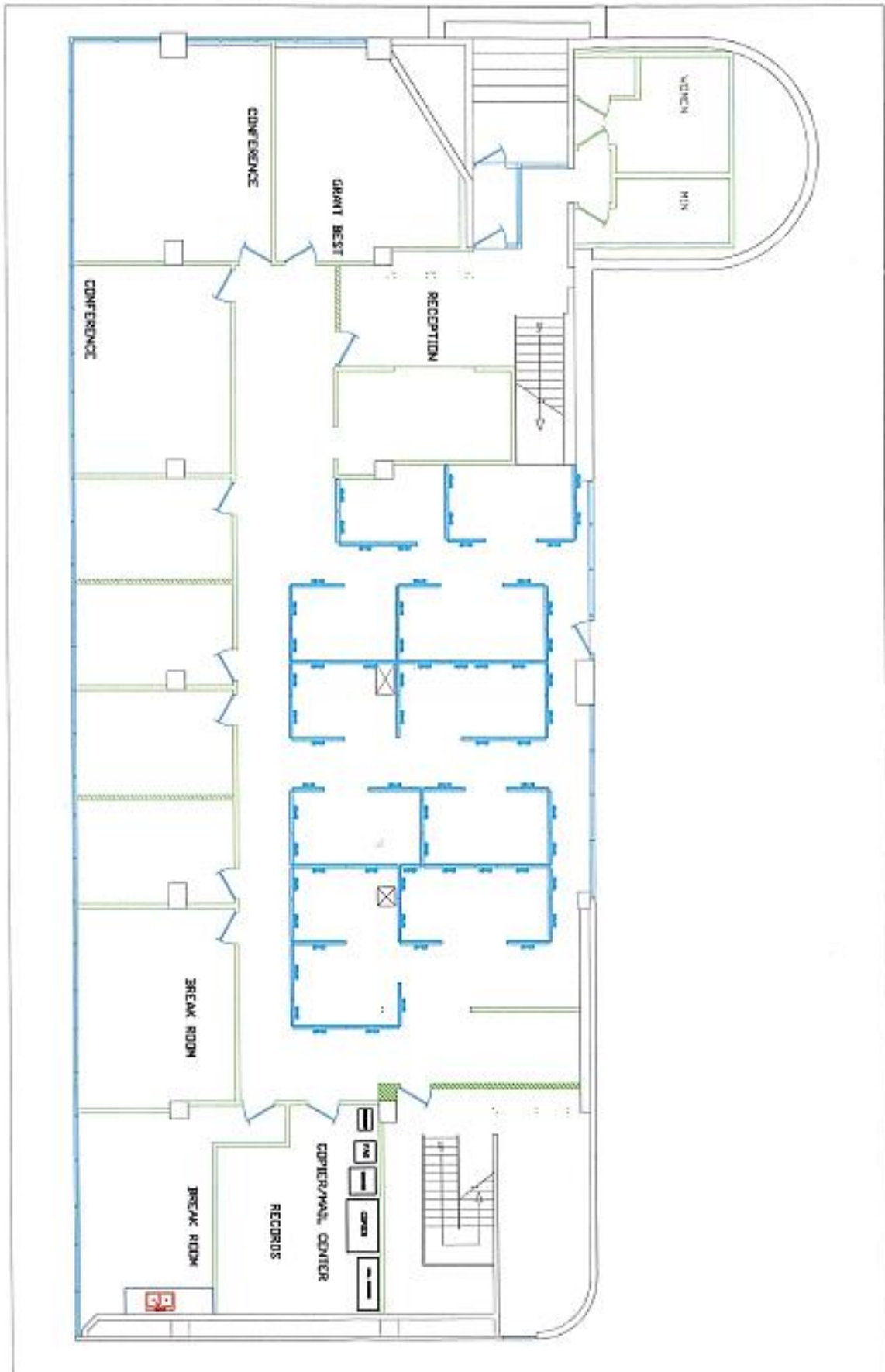
84 Court Street, Suite 300
Binghamton, New York 13901
phone: +1 607 754 5990

pyramidbrokerage.com

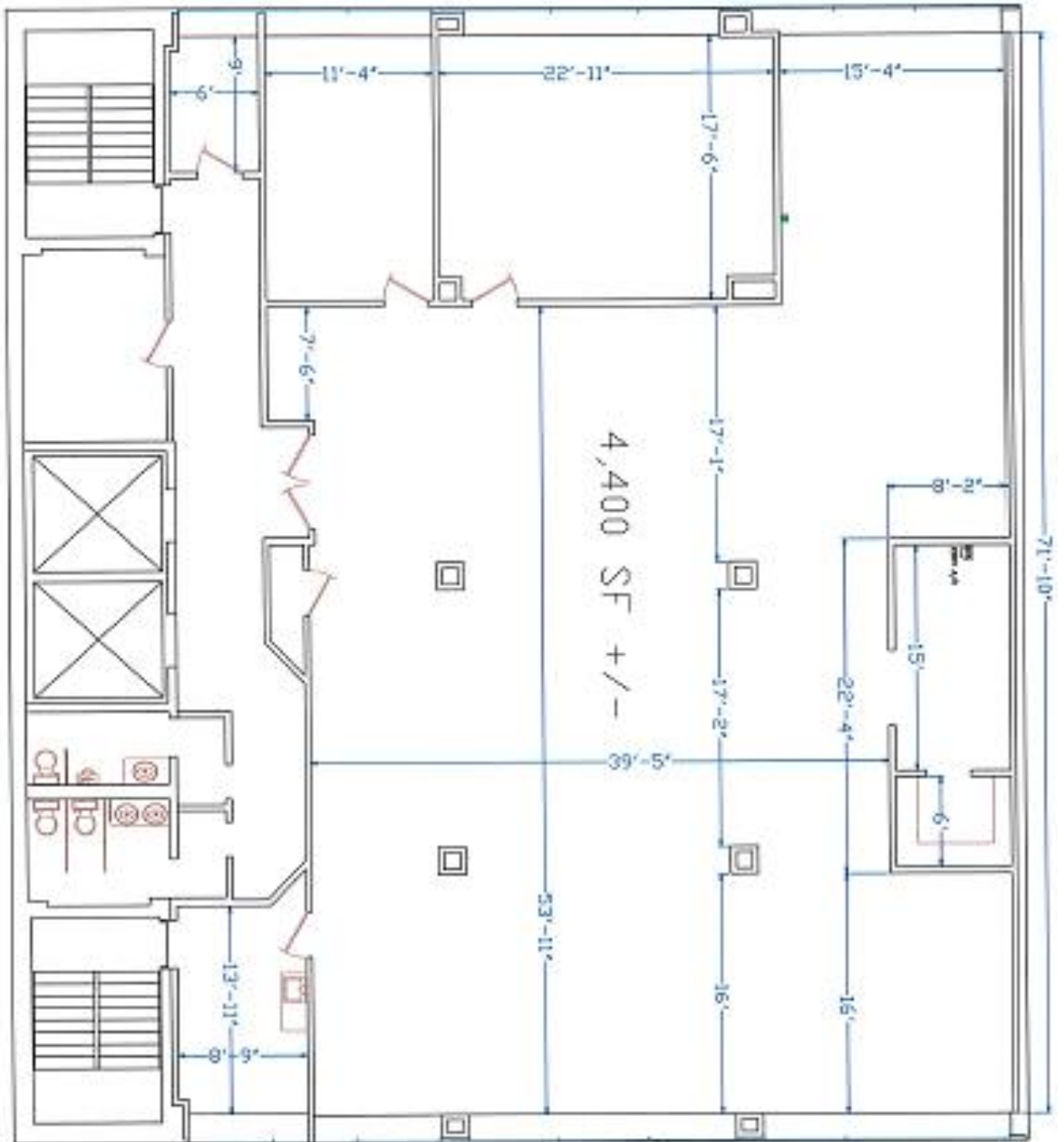
HIGHLIGHTS

- Multi-tenant office building located in the central business district.
- Multiple suites available.
- Open floor plans. Expansive area of windows. Well maintained.
- Building adjacent to municipal parking ramp.
- Walking distance to CBD with shops, restaurants, government buildings and other services.

DETAILS	
AVAILABLE SUITES	2,500 SF – 5,160 SF
LEASE RATE	\$12.75/SF Gross
ZONING	CBD



SIXTH FLOOR





Pyramid Brokerage
Company

FOR LEASE

53 Chenango Street
Binghamton, NY

