

# 155 WEST 23RD STREET



# SPACE DETAILS

### LOCATION

North block between Sixth and Seventh Avenues

### APPROXIMATE SIZE

Ground Floor	1,867 SF
Basement	2,400 SF
Total	4,267 SF

### CEILING HEIGHT

Ground Floor	15 FT
--------------	-------

### FRONTAGE

15 FT on West 23rd Street

### TERM

Negotiable

### POSSESSION

Immediate

### SITE STATUS

Redevelopment

### NEIGHBORS

Whole Foods Market, Eataly, Trader Joe's, The Home Depot, Shake Shack, Best Buy, Panera Bread, Fairway, P.C. Richard, Chase, Peloton and Solidcore

### COMMENTS

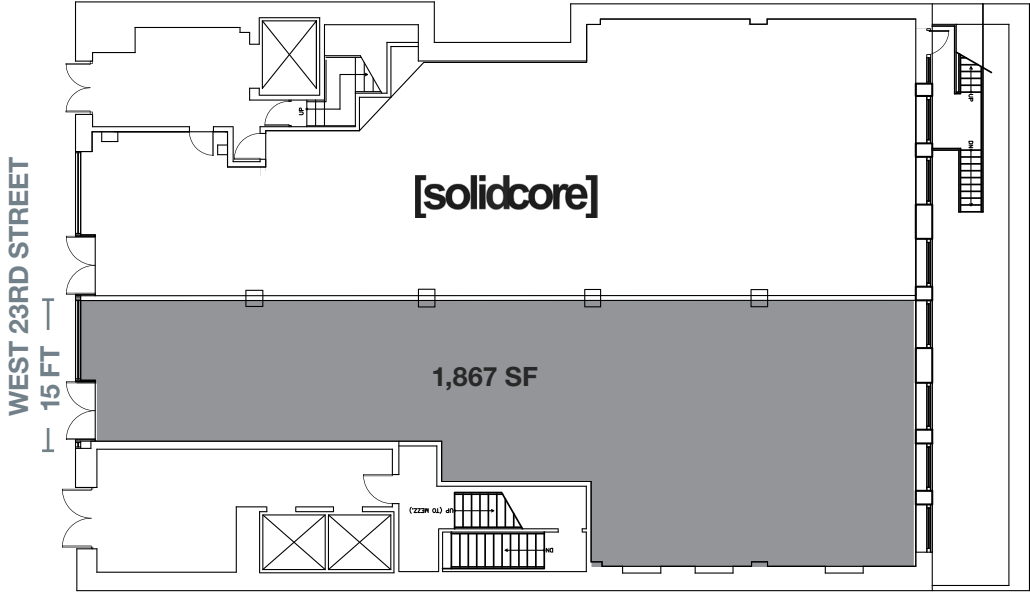
All uses considered including food

At the base of a boutique Midtown South office building

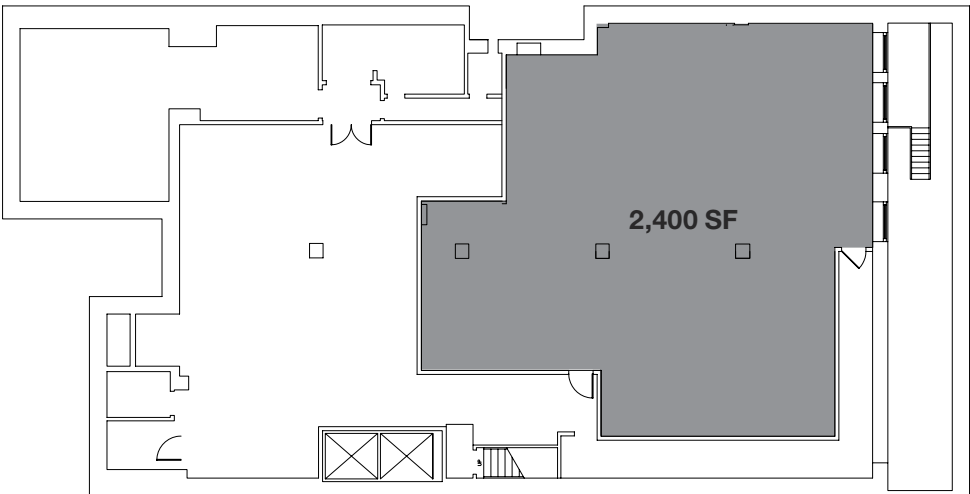
Natural light on both sides

Steps from the **1** **F** **M** subway lines and the **PATH** trains

### GROUND FLOOR

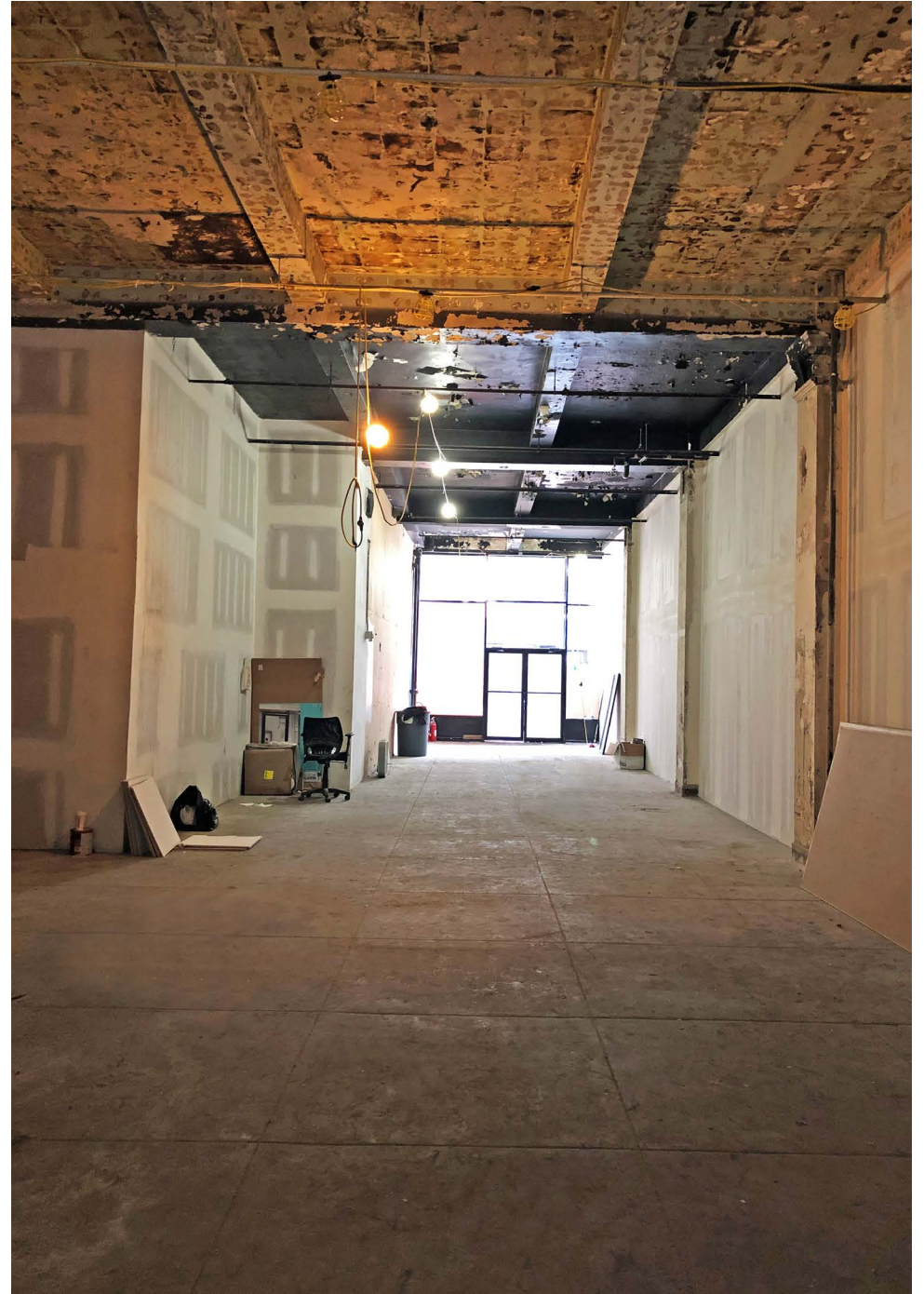


### BASEMENT

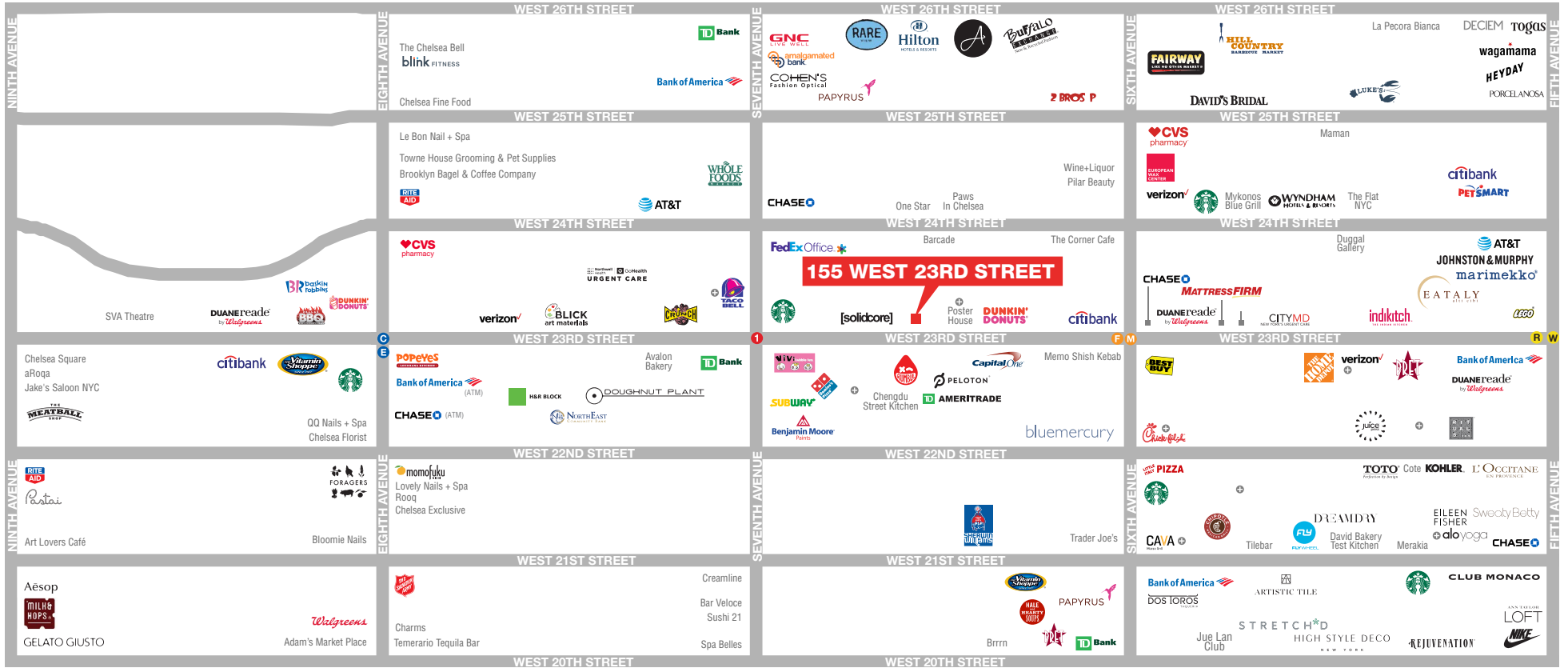




# ADDITIONAL IMAGES



# AREA RETAIL



➤ COMING SOON

## CONTACT EXCLUSIVE AGENT

**HARRISON ABRAMOWITZ**  
212.372.2467  
habramowitz@ngkf.com



NGKF.COM

© 2019 NEWMARK KNIGHT FRANK RETAIL. The information contained herein has been obtained from sources deemed reliable but has not been verified and no guarantee, warranty or representation, either express or implied, is made with respect to such information. Terms of sale or lease and availability are subject to change or withdrawal without notice.