

# WATT-FAIR OAKS PROFESSIONAL CENTER

591 WATT AVENUE | SACRAMENTO, CA



NEWLY REMODELED



FULL 5% COMMISSION TO PROCURING BROKER

## PROPERTY HIGHLIGHTS

- > Suite 220 – 1,534 RSF
- > High Visibility Signage to over 140,000 vehicles/day
- > Monument Signage Available
- > Easy Access to Highway 50
- > New Landscaping
- > New Common Area Lobby and Building Entryway Finishes
- > Building Atrium
- > **Competitive Lease Rates**



FOR MORE INFORMATION, PLEASE CONTACT:

**KEVIN PARTINGTON**

Executive Director

(916) 288.4807

kevin.partington@cushwake.com

CA License NO: 01199010

**SEAN MULLEN**

Associate Director

(916) 288.4811

sean.mullen@cushwake.com

CA License NO: 01845406

**SPENCER NIELSEN**

Associate

(916) 288.4531

spencer.nielsen@cushwake.com

CA License NO: 01964163

**CUSHMAN & WAKEFIELD**

400 Capitol Mall, Suite 650

Sacramento, CA 95814

cushmanwakefield.com

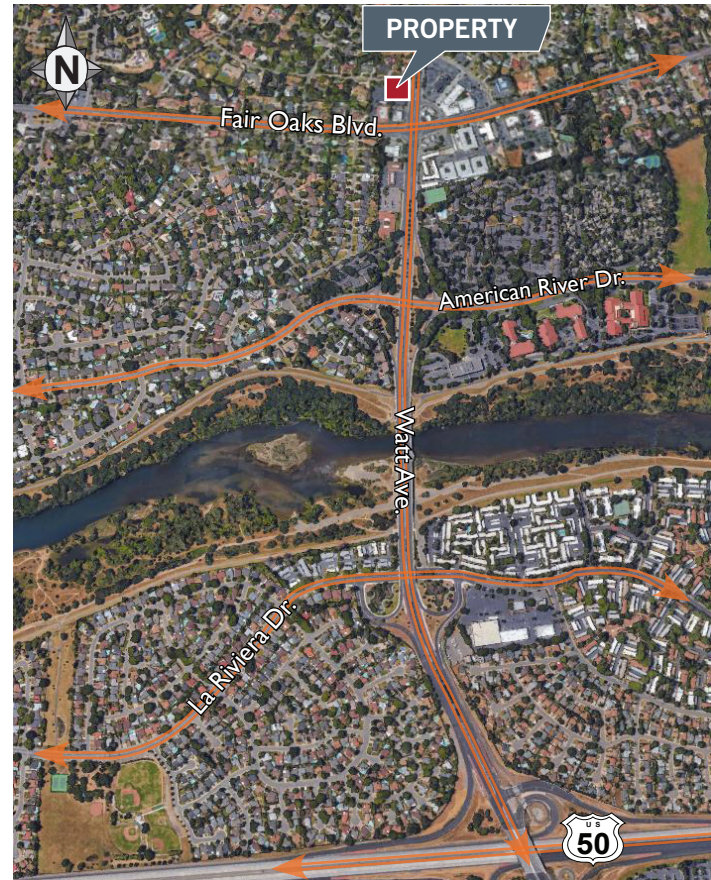
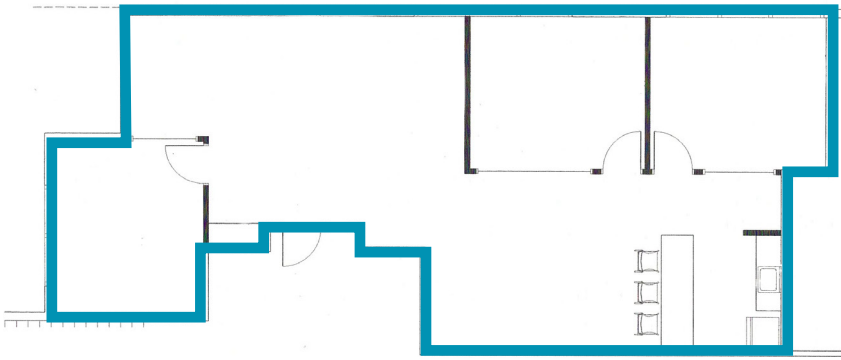
CA License No: 00616335

# FOR LEASE

# WATT- FAIR OAKS PROFESSIONAL CENTER 591 WATT AVENUE SACRAMENTO, CA

## SECOND FLOOR

SUITE 220 | ±1,534 RSF



FOR MORE INFORMATION, PLEASE CONTACT:

**KEVIN PARTINGTON**  
Executive Director  
(916) 288.4807  
kevin.partington@cushwake.com  
CA License NO: 01199010

**SEAN MULLEN**  
Associate Director  
(916) 288.4811  
sean.mullen@cushwake.com  
CA License NO: 01845406

**SPENCER NIELSEN**  
Associate  
(916) 288.4531  
spencer.nielsen@cushwake.com  
CA License NO: 01964163

**CUSHMAN & WAKEFIELD**  
400 Capitol Mall, Suite 650  
Sacramento, CA 95814  
cushmanwakefield.com  
CA License No: 00616335

© Copyright 2015 - Cushman & Wakefield Inc. - All rights reserved. No warranty or representation, express or implied, is made as to the accuracy of the information contained herein, and same is submitted subject to errors omissions, change of price, rental or other conditions, withdrawal without notice, and to any specific listing conditions, imposed by our principals.