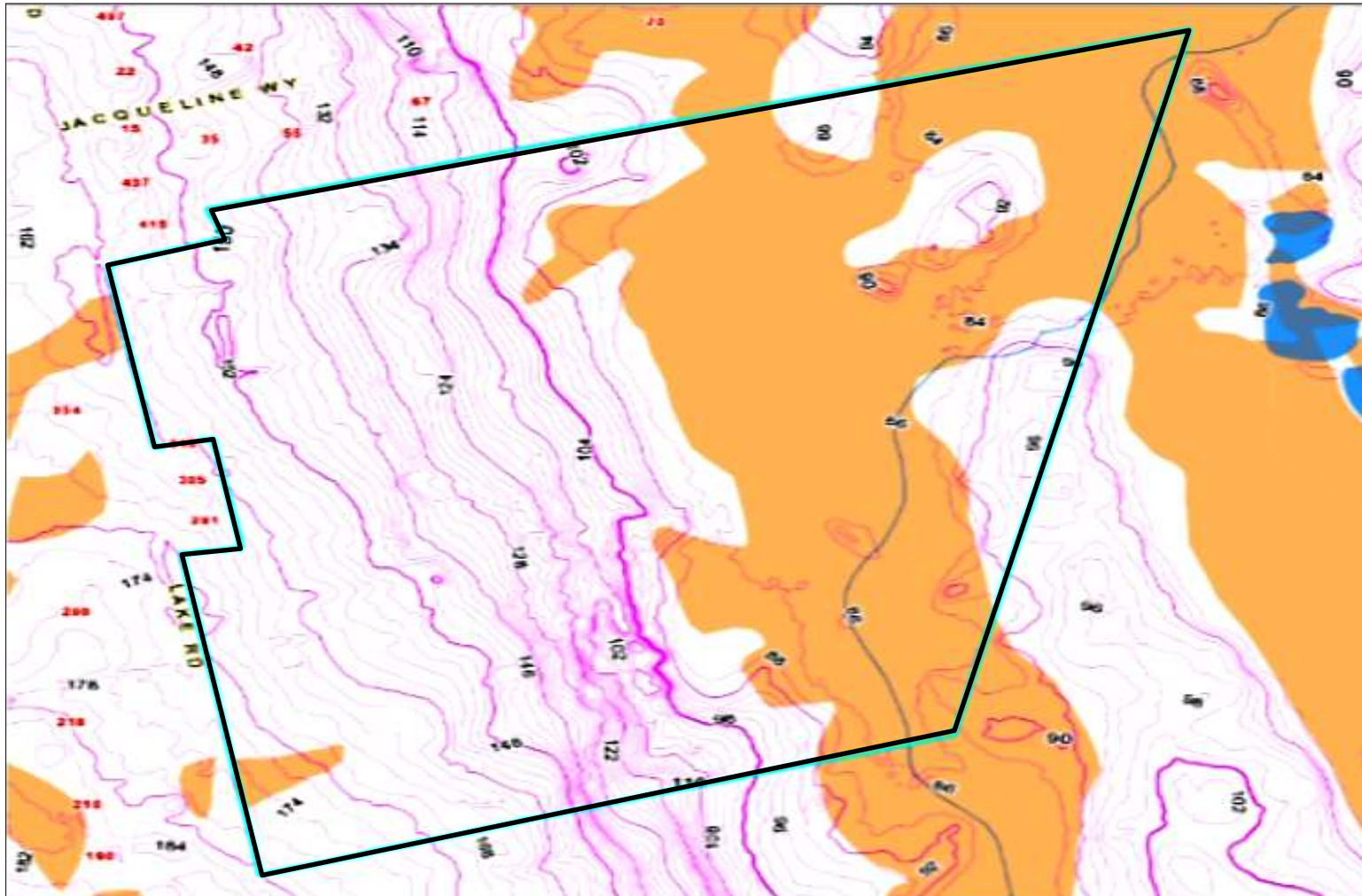


Approximately 164 Acres of Residential Developable Land Or Family Compound
Lake Road, Tiverton, RI **Price \$1,900,000**



For more information about this opportunity contact:

Tom Sullivan

508.862.9000 Ext. 104

Mobile: 508.962.5075

tjs@comrealty.net

Commercial
Realty Advisors
www.comrealty.net

Commercial Realty Advisors, Inc.

Real Estate Investment Brokerage Company

222 West Main Street

Hyannis, Massachusetts 02601

Tel: 508.862.9000

Fax: 508.862.9200

This information has been secured from sources we believe to be reliable, but we make no representation or warranties, expressed or implied, as to the accuracy of the information. Referenced square footage and acreage and sketched outlines of the property are approximate. Buyer must verify all the information and bears all the risk for any inaccuracies.

Executive Summary

Investment Highlights

- R-80 Zoning
- Extensive road frontage
- Approximately one mile from Little Compton, RI
- Uplands abutting the roadway.

Location

Lake Road Tiverton, RI (GeoLocation: 41.584379, -71.161661)

Overview

- Suitable for Subdivision or Condominium development.
- Potential for State of Rhode Island Comprehensive Permit.
- Mostly gently sloping topography.
- Not in a flood zone.

Constraints

- No Town Sewer.
- No Town Water

Financing:

Property offered free and clear of existing financing. Possible new loan may be secured by borrower at attractive market rates

