



Sonoma Marketplace

201 W. Napa Street | Sonoma, California

NOW LEASING

<u>SPACE#</u>	<u>SF</u>	<u>RENT</u>	<u>NNN</u>
27	690	Call	\$.52
32	960	Call	\$.52
8	1,632	Call	\$.69



For information, contact:

Carter Hemming, CA BRE #01123464
chemming@crosspointrealty.com

Kathy DeOchoa, CA BRE #01871554
kdechoa@crosspointrealty.com

Phone: 415-288-6888
Fax: 415-288-6877

Crosspoint Realty Services, Inc.
20211 Patio Drive #145
Castro Valley, CA 94546
www.crosspointrealty.com



SITE PLAN

Contact: Carter Hemming (CA BRE#01123464), chemming@crosspointrealty.com; Kathy DeOchoa (CA BRE#01871554), kdechoa@crosspointrealty.com; Phone 415.288.6888



SONOMA MARKETPLACE

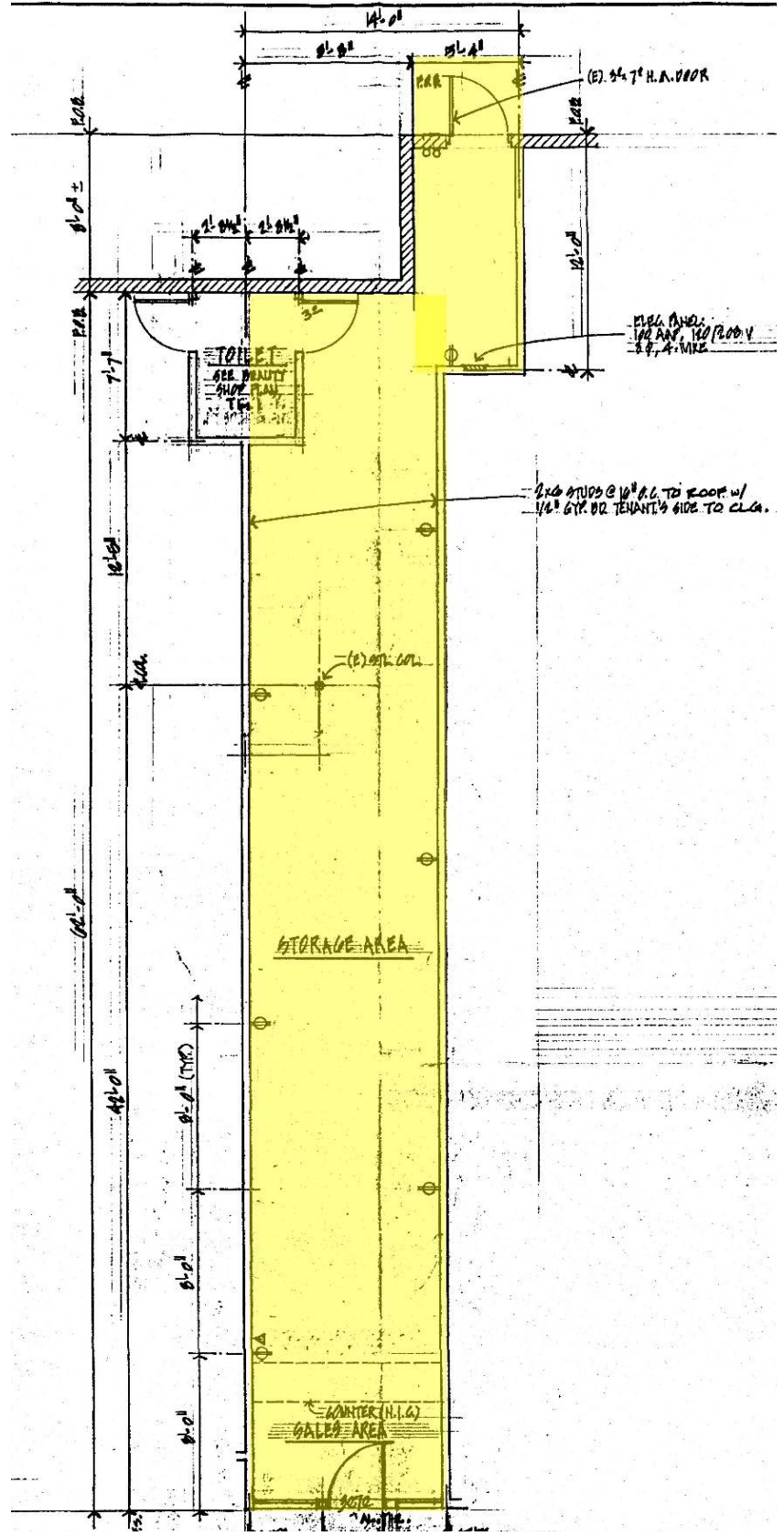
- 01-02 The Toy Shop
- 03 Sonoma Optometry
- 04 Filigree Jewelry
- 05 Savory Spice
- 06 Scoops Ice Cream
- 07 Sonoma Pet Center
- 08 AVAILABLE - 1,632 SF
- 09 Bangkok 9 Thai Restaurant
- 10 Marketplace Haircutters
- 11-13 Whole Foods

- 14 McCaulou's Kids
- 15 Pure Barre
- 16 Fine Line Art Supply
- 17 Holly Hock
- 18 McCaulou's
- 19 McCaulou's Gifts
- 21 Home Grown Bagels
- 22 Studio Sun & Beauty
- 23 Nail Pro
- 24 Tip Top Cleaners

- 25 Launderland
- 26 Happy Garden Restaurant
- 27 AVAILABLE - 690 SF
- 28 A New Image Salon
- 29 CVS
- 30-31 Round Table Pizza
- 32 AVAILABLE - 960 SF
- 33 Bank of the West
- 34 Black Bear Diner

SPACE 27 PLAN

SPACE 27
690 SF



For information, contact:

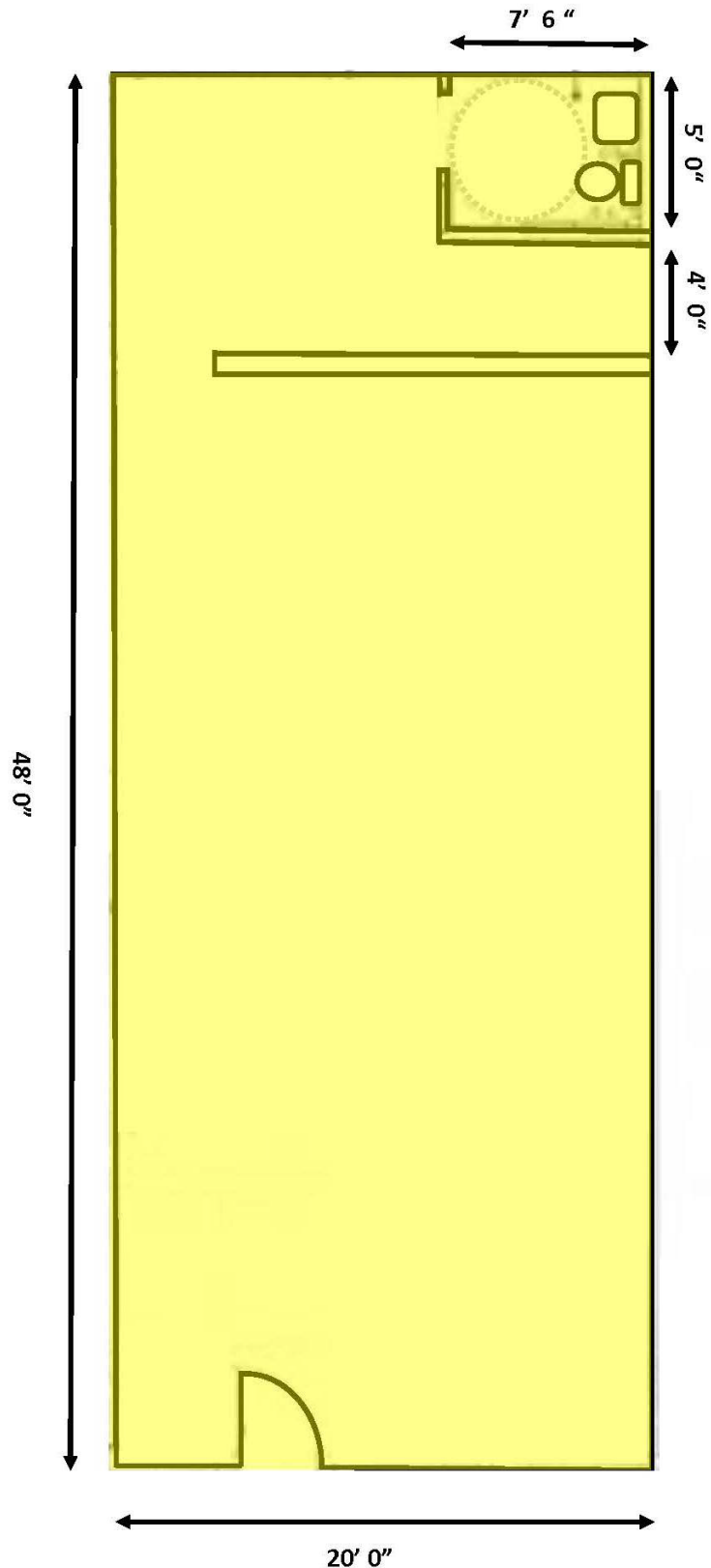
Carter Hemming, CA BRE #01123464
chemming@crosspointrealty.com

Kathy DeOchoa, CA BRE #01871554
kdechoa@crosspointrealty.com

Phone: 415-288-6888
Fax: 415-288-6877
Crosspoint Realty Services, Inc.
20211 Patio Drive #145
Castro Valley, CA 94546
www.crosspointrealty.com

SPACE 32 PLAN

SPACE 32
960 SF



For information, contact:

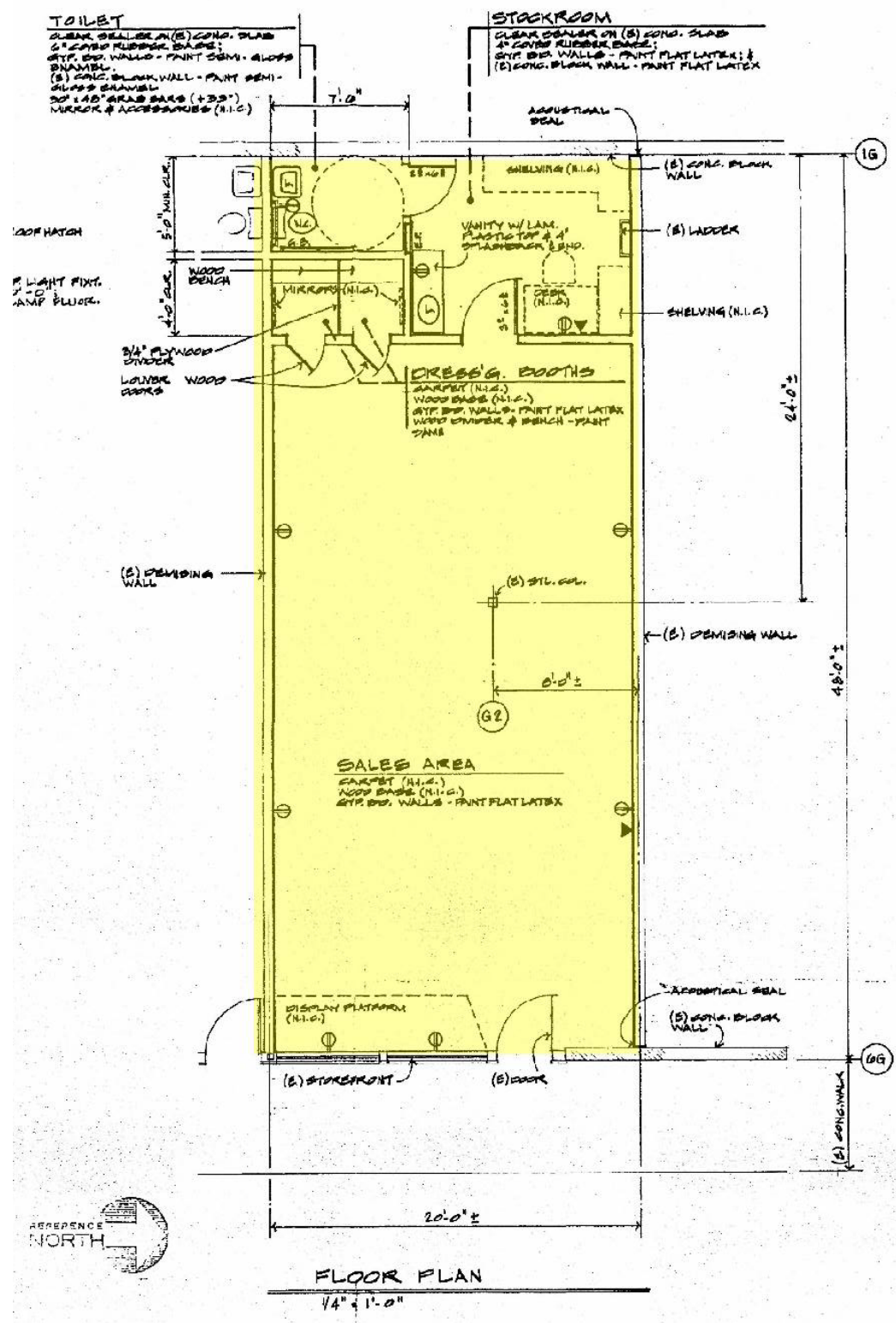
Carter Hemming, CA BRE #01123464
chemming@crosspointrealty.com

Kathy DeOchoa, CA BRE #01871554
kdeochoa@crosspointrealty.com

Phone: 415-288-6888
Fax: 415-288-6877
Crosspoint Realty Services, Inc.
20211 Patio Drive #145
Castro Valley, CA 94546
www.crosspointrealty.com

SPACE 8 PLAN

SPACE 8
1,632 SF



For information, contact:

Carter Hemming, CA BRE #01123464
chemming@crosspointrealty.com

Kathy DeOchoa, CA BRE #01871554
kdechoa@crosspointrealty.com

Phone: 415-288-6888
Fax: 415-288-6877
Crosspoint Realty Services, Inc.
20211 Patio Drive #145
Castro Valley, CA 94546
www.crosspointrealty.com



Sonoma Marketplace

201 W. Napa Street | Sonoma, California

MARKET AREA

Sonoma Marketplace Tenants Include:

Whole Foods
CVS

McCaulou's Department Store

Bank of the West	Homegrown Bagel
Black Bear Diner	McCaulou's Kids
Filigree Jewelers	Pure Barre
Holly Hock	Round Table Pizza

For information, contact:

Carter Hemming, CA BRE #01123464
chemming@crosspointrealty.com

Kathy DeOchoa, CA BRE #01871554
kdeochoa@crosspointrealty.com

Phone: 415-288-6888
Fax: 415-288-6877

Crosspoint Realty Services, Inc.
20211 Patio Drive #145
Castro Valley, CA 94546
www.crosspointrealty.com



Sonoma Marketplace

201 W. Napa Street | Sonoma, California

MAP & INFORMATION

Description:

Sonoma Marketplace is the community dominant shopping center anchored by Whole Foods, CVS, and McCaulou's.

Location:

Intersection of Highway 12 and Second Avenue in the historic town of Sonoma, California.

For information, contact:

Carter Hemming, CA BRE #01123464
chemming@crosspointrealty.com

Kathy DeOchoa, CA BRE #01871554
kdeochoa@crosspointrealty.com

Phone: 415-288-6888
Fax: 415-288-6877

Crosspoint Realty Services, Inc.
20211 Patio Drive #145
Castro Valley, CA 94546
www.crosspointrealty.com

